

# WATERFALL

## COLLECTION

01.

CLASSIC CHOICE

A warm gray base carries **7 clean vibrant accent colors**.

02.

MULTIPLE COMBINATION

**2 meters long** and provides **a smooth transition between gray and full color**. Our special SHAPE SYSTEM offers more ways for flooring design.

03.

PURE TEXTURE

A simple linear **multi-level textured loop** that offers a waterfall of **colors and formats**.

# 01.

## OUR GOAL

One of the VOXFLOOR classics. Its full extension is **2 meters long** and provides **a smooth transition between gray and full color.** You can use the set of tiles either as a complete set or by selecting fewer tiles for a more unique floor pattern.

**VOXFLOOR**  
MILANO CREATIVE STUDIO



Waterfall 04

# 02.

## COLORS

A simple linear **multi-level textured loop** that offers a waterfall of **colors and formats**.

Waterfall has become one of Vox flor's most popular designer products due to its vibrant color, linear pattern, and multiple format availability. Providing a flexible foundation to build an exciting floor design. From simple color insets and edge treatments to more complex graduated zoning Waterfall is a major asset in your floor design toolbox.

# NATURAL FADING



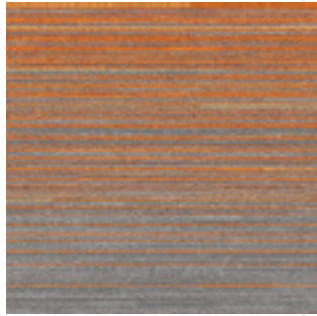




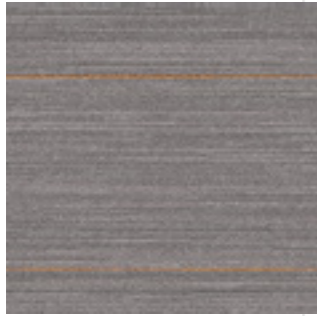
Waterfall 01-D



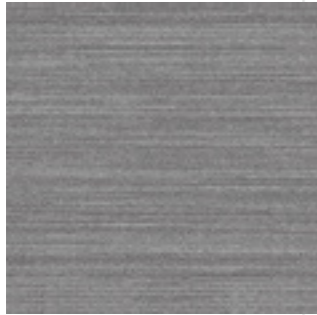
Waterfall 01-C



Waterfall 01-B



Waterfall 01-A



Waterfall 05



Waterfall 01-A + B + C + D, Waterfall 05



Waterfall 01, 05

# POWERFUL EFFECT





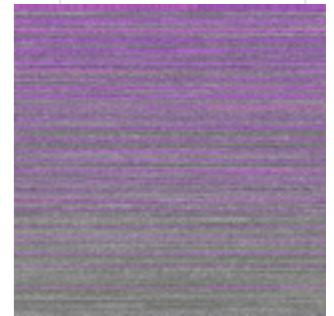
Waterfall 02, 03



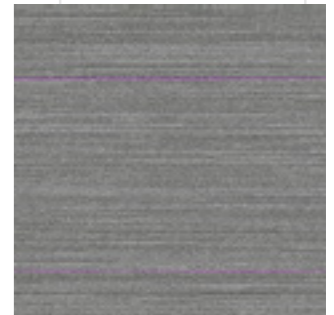
Waterfall 02-D



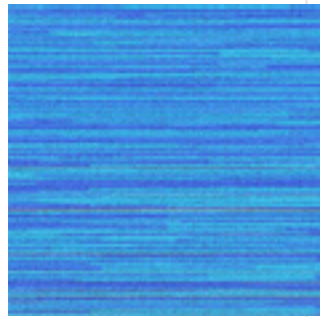
Waterfall 02-C



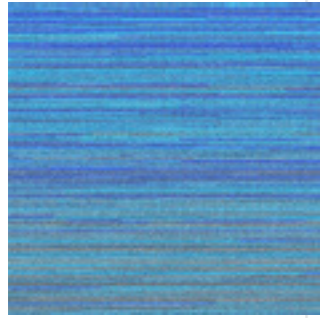
Waterfall 02-B



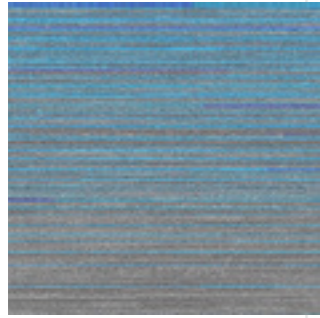
Waterfall 02-A



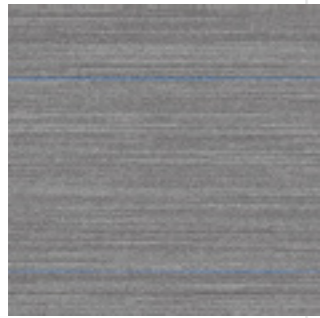
Waterfall 03-D



Waterfall 03-C



Waterfall 03-B



Waterfall 03-A



Waterfall 03, 05



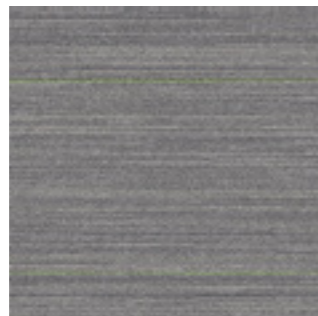
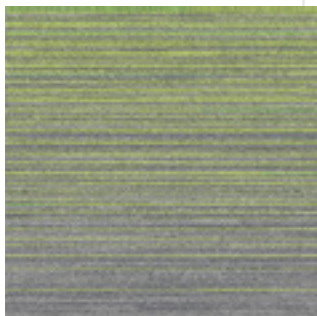
# SOFT TEXTURE





Waterfall 04-D

Waterfall 04-C



Waterfall 04-B

Waterfall 04-A

A warm gray base carries the 7 clean vibrant accent colors. Each color range has been designed to graduate over 2m which offers the facility to create one long graduating color or range of individual color tones.



Waterfall 04-D



Waterfall 04



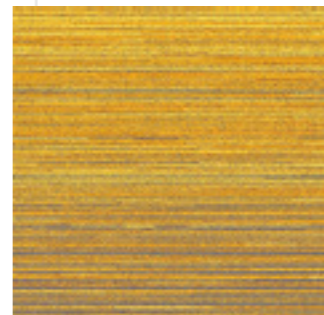
Waterfall 05, 07



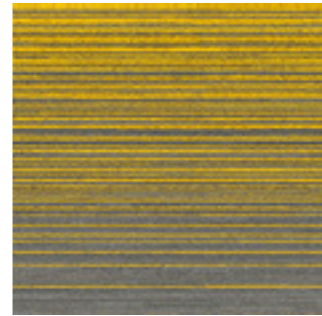
Waterfall 07, 09



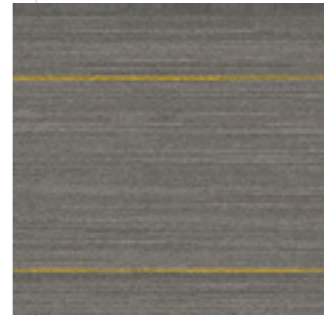
Waterfall 07-D



Waterfall 07-C



Waterfall 07-B



Waterfall 07-A



# PASSIONATE DESIGN





Waterfall 08, 10



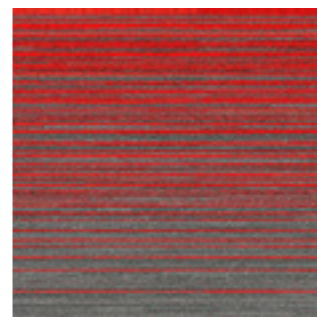
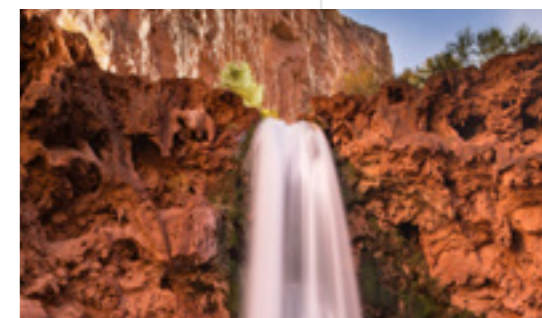
Waterfall 08



Waterfall 08-D



Waterfall 08-C



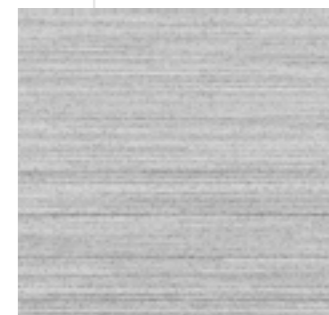
Waterfall 08-B



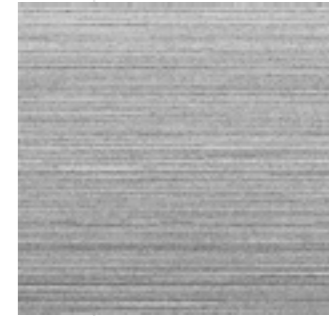
Waterfall 08-A



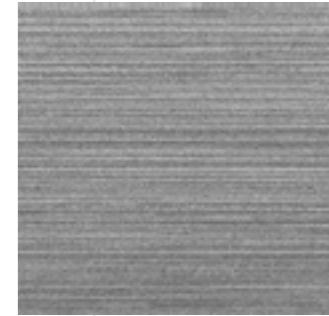
Waterfall 10



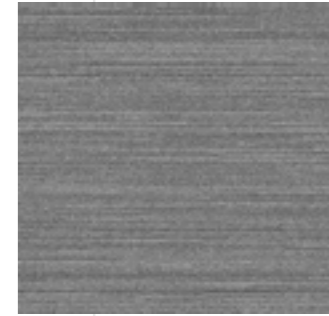
Waterfall 09-D



Waterfall 09-C



Waterfall 09-B



Waterfall 09-A



# NEUTRAL BALANCE







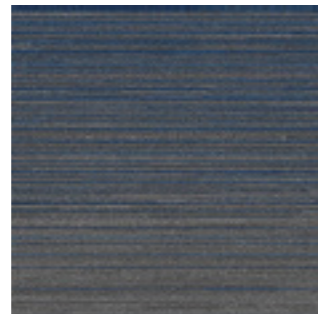
The texture of the liner can be designed differently according to different shapes, just like a puzzle, no matter how you arrange them, you will always be surprised by how creative it is.



Waterfall 12-D



Waterfall 12-C



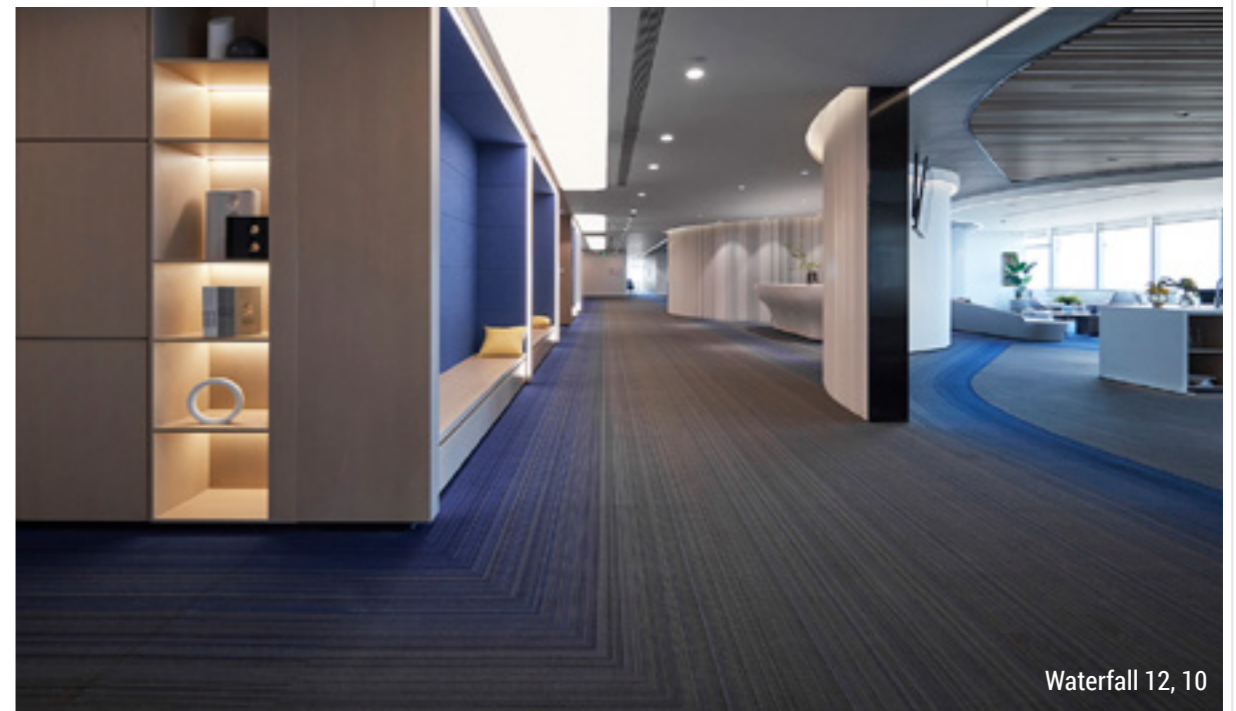
Waterfall 12-B



Waterfall 12-A

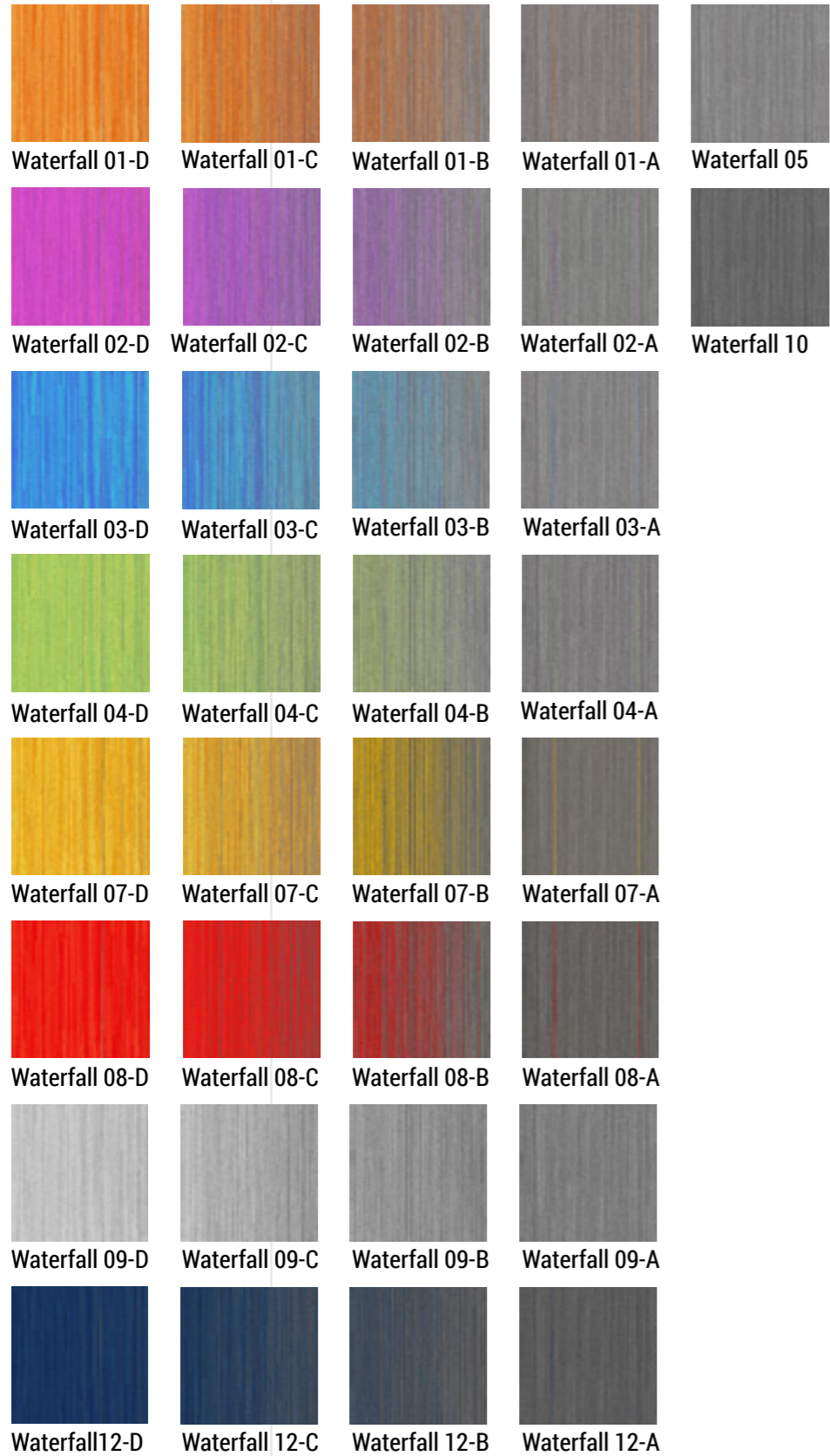


Waterfall 12



Waterfall 12, 10

**COLORS**



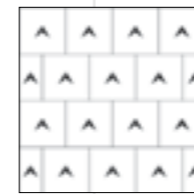
**Specifications**

Style Name: Waterfall  
 Construction: Multi-level Loop  
 Fiber: Voxflor Certified Nylon  
 Gauge: 1/12"  
 Stitches: 11 per inch  
 Pile Weight: 18 OZ/yd<sup>2</sup>  
 Average Pile Height: 3.5 ± 0.5mm  
 Backing: EcoAce-Bac®  
 Tile size: 50cm\*50cm  
 Area of Use: Commercial - Heavy Duty  
 Anti-microbial: Ultra-Fresh Treatment (Available)  
 Flammability: ASTM E648 Class I, GB8624-2012 B1(C)  
 Smoke Density: ASTM E662 Less than 450, GB/T 8627-1999  
 Static Propensity: AATCC-134≤3.5 KV, GB/T 18044-2008

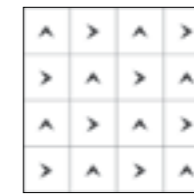
**Installation Methods**



Monolithic

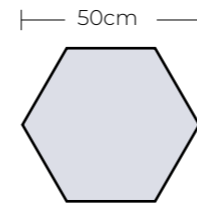


Ashlar

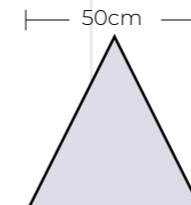


Quarter-turn

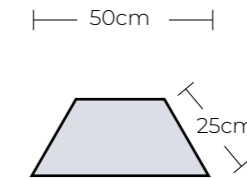
**Shape System**



Hexagon



Triangle



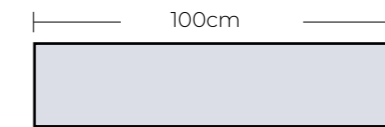
Trapezoid



Square



Rightangle



Plank

## Manufacture System

**SOLAR**  
made carpet

VOXFLOOR builds its own solar power generation system and use clean energy to produce in a sustainable way.

## Product Further Info



An Environmental Product Declaration (EPD) tells the life cycle story of a product in a single, comprehensive report. The EPD provides information about a product's impact upon the environment, such as global warming potential, smog creation, ozone depletion and water pollution.



CE marking indicates that a product has been assessed by the manufacturer and deemed to meet EU safety, health and environmental protection requirements.

## Credits Contribution to:



LEED (Leadership in Energy and Environmental Design) is the most widely used green building rating system in the world. LEED certification is a globally recognized symbol of sustainability achievement and leadership.



**EcoAce-Bac®**  
GLP No. : 100231

Green Label Plus is an independent testing program that identifies carpet, adhesives, and cushion with very low emissions of VOCs to help improve indoor air quality.



VOXFLOOR recommends using its own carpet tile tackifier with rust inhibitor. It is an EC-1 PLUS certified adhesive.



WELL is the leading tool for advancing health and well-being in buildings globally. Register your office, building or other space to leverage WELL's flexible framework for improving health and human experience through design.



Declare is a transparency platform to share and find healthy building products. VOXFLOOR's EcoAce-Bac® Collection reach "Red List Free" grade.



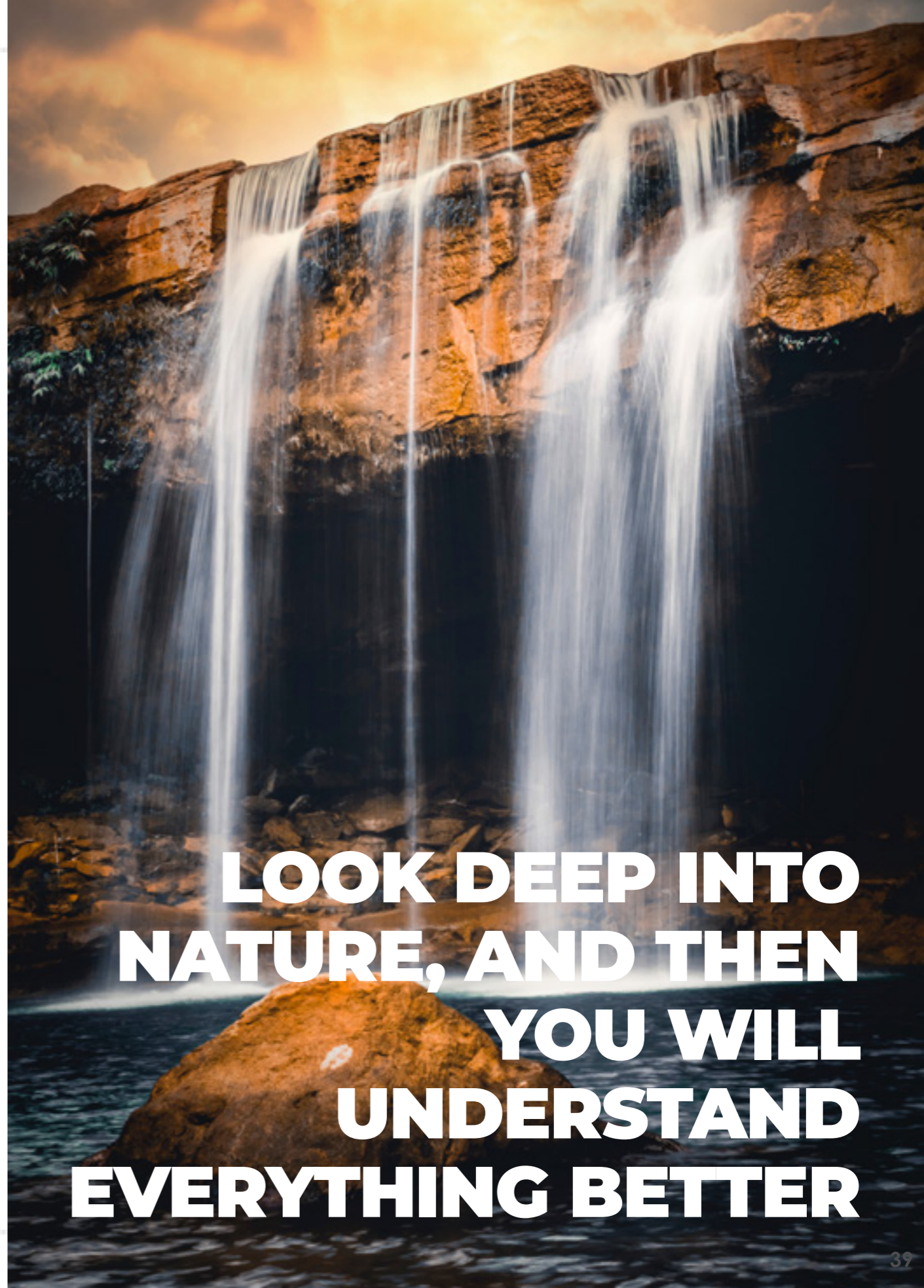
Ultra-Fresh is a portfolio of antimicrobial treatments developed by Thomson Research Associates, Inc. Customer can choose this High-Performance Antimicrobial Technology.



The Living Building Challenge (LBC) is a certification program that defines the most advanced measure of sustainability. It uses the metaphor of a flower because the ideal built environment should function as cleanly and efficiently as a flower.



Our manufacture system has been certified under ISO 9001, ISO 14001 and ISO 45001, which means with the management, production facility and the strict quality controls, VOXFLOOR® represents qualified and trusty products.



**LOOK DEEP INTO  
NATURE, AND THEN  
YOU WILL  
UNDERSTAND  
EVERYTHING BETTER**



**VOXFLOR®**

[www.voxflor.com](http://www.voxflor.com)

Shanghai **Headquarters**

T +86 021 62989325

Milano Creative Studio

T +39 3885863150

China **Branch Offices**

Beijing/ Guangzhou/ Shenzhen/ Xiamen

T 400 021 0790

