

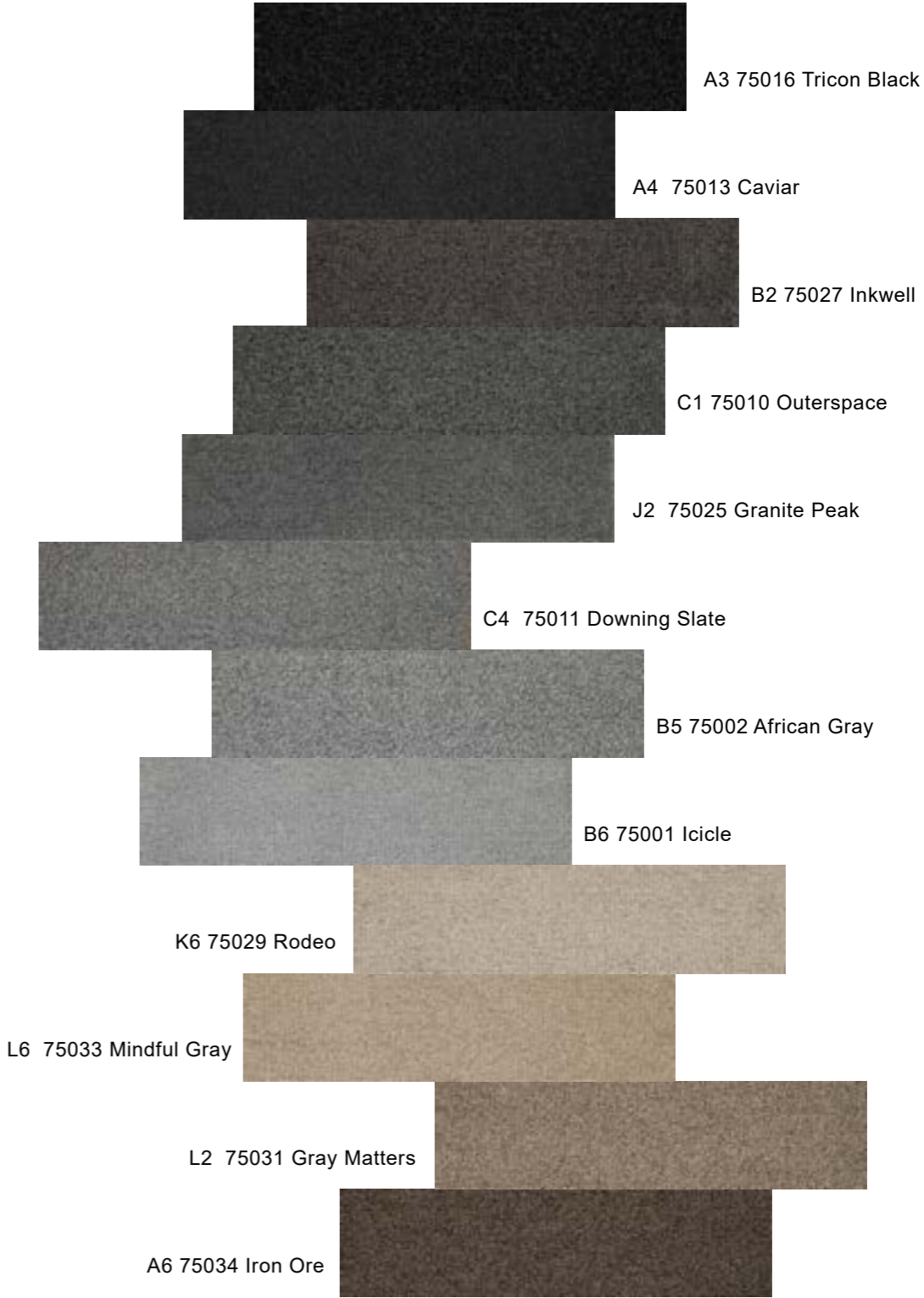


**SENSE**

**COLLECTION**

**VOXFLO<sup>R</sup>**

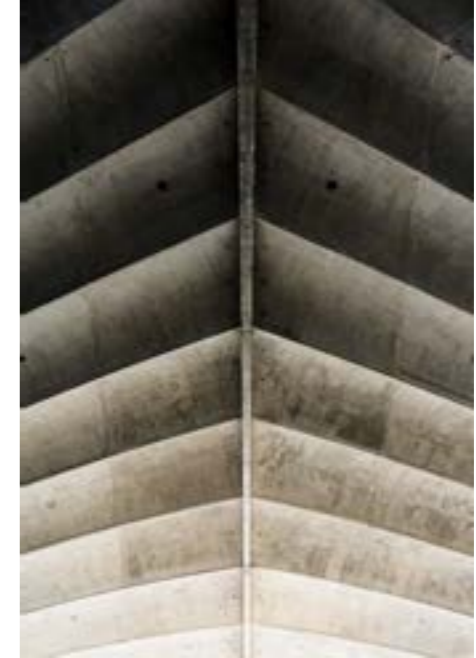
12 of 36 colors are chosen to make the roomsetting pictures in this brochure. Obviously, SENSE COLLECTION could do more than this. It's designed to inspire architects and interior designers.



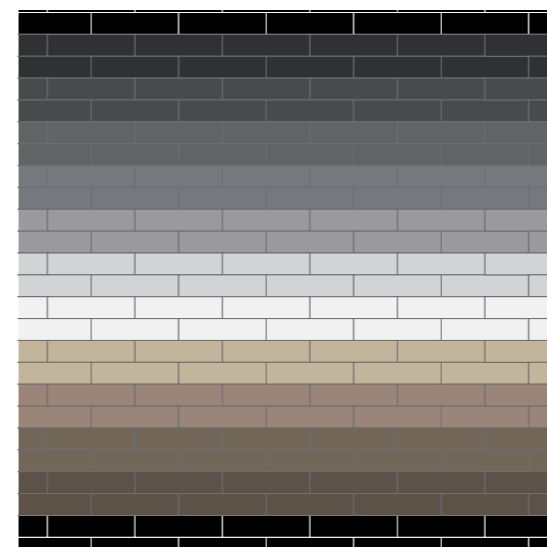
**SENSE COLLECTION**

Still having a headache for not having a suitable neutral color?

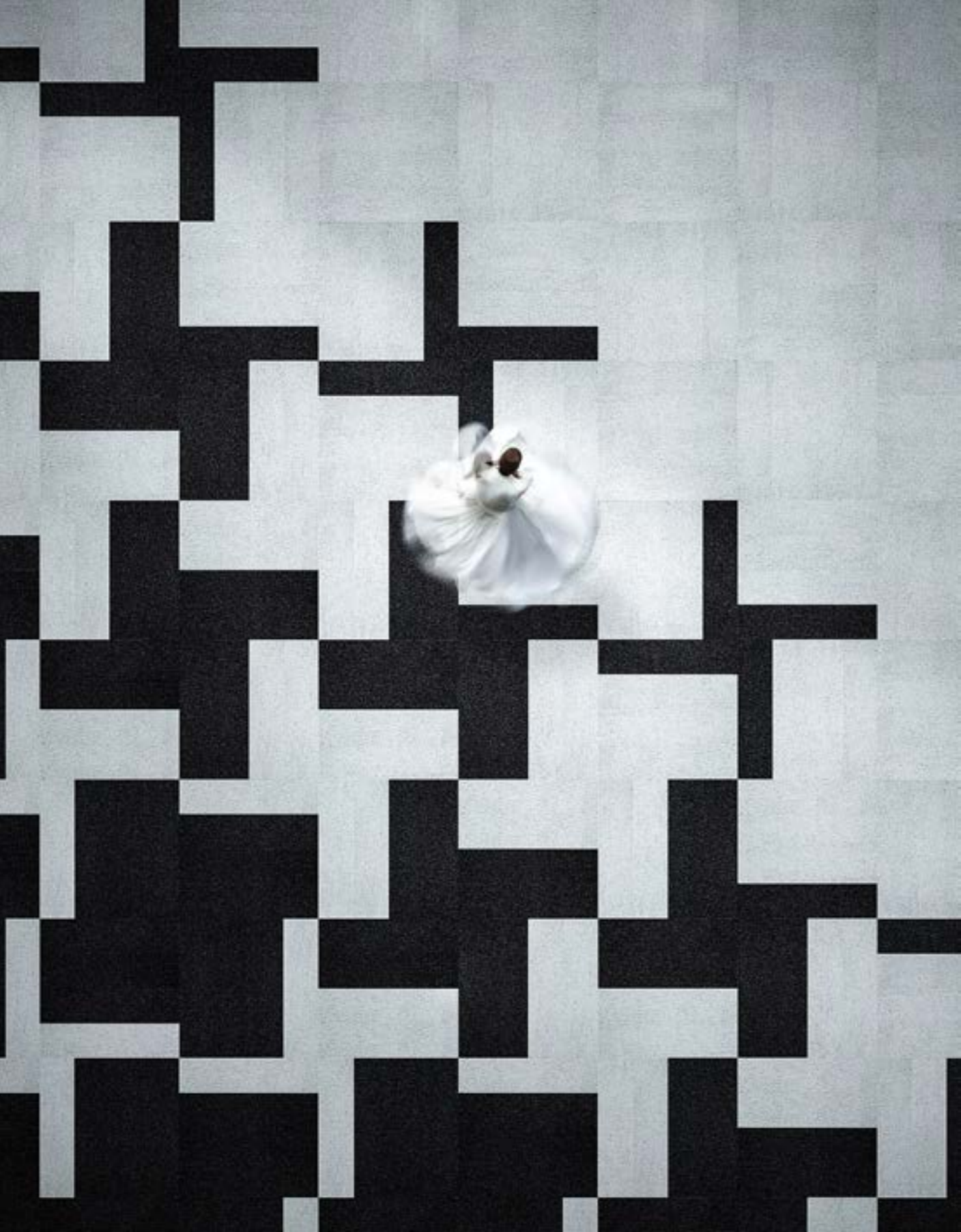
VOXFLO® SENSE COLLECTION will be a favorite of designers and architects. Whether used alone or in combinations, SENSE COLLECTION creates a low-key, subtle, rich, reliable, story-telling and mindful atmosphere on the floor. The puffy high yarn loops and tight low yarn loops make the floor more appealing.



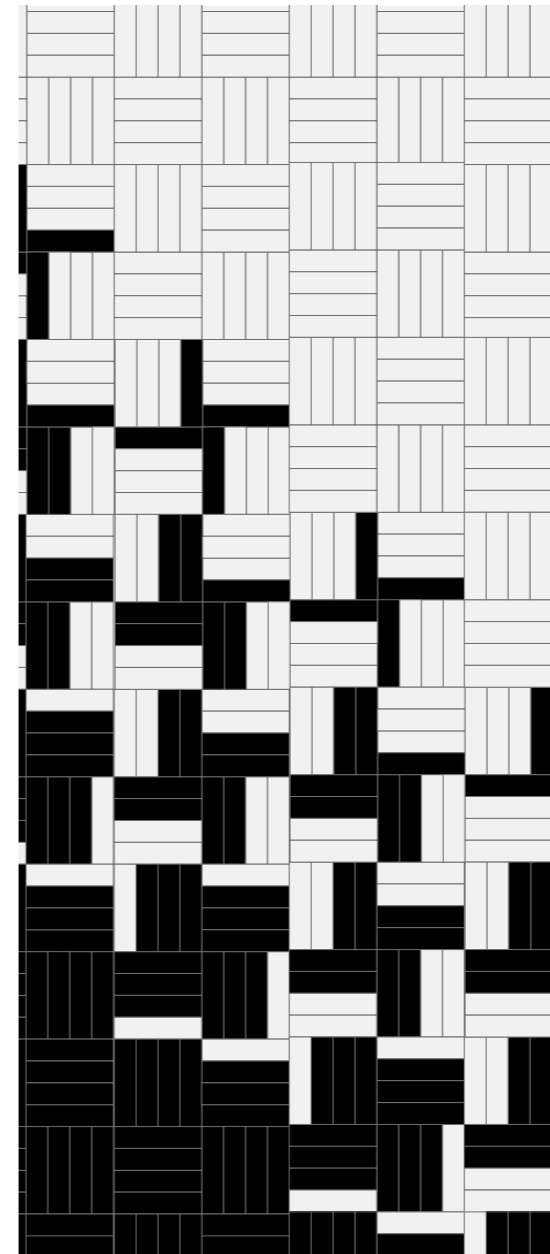
S M O O T H



- A3    **Sense 75016** Tricon Black
- A4    **Sense 75013** Caviar
- B2    **Sense 75027** Inkwell
- C1    **Sense 75010** Outerspace
- J2    **Sense 75025** Granite Peak
- C4    **Sense 75011** Downing Slate
- B5    **Sense 75002** African Gray
- B6    **Sense 75001** Icicle
- K6    **Sense 75029** Rodeo
- L6    **Sense 75033** Mindful Gray
- L2    **Sense 75031** Gray Matters
- A6    **Sense 75034** Iron Ore



F L A T

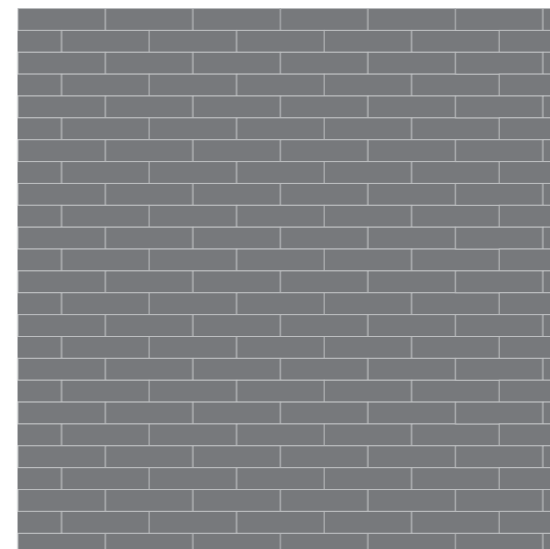


■ A3 Sense 75016 Tricon Black

□ B6 Sense 75001 Icicle



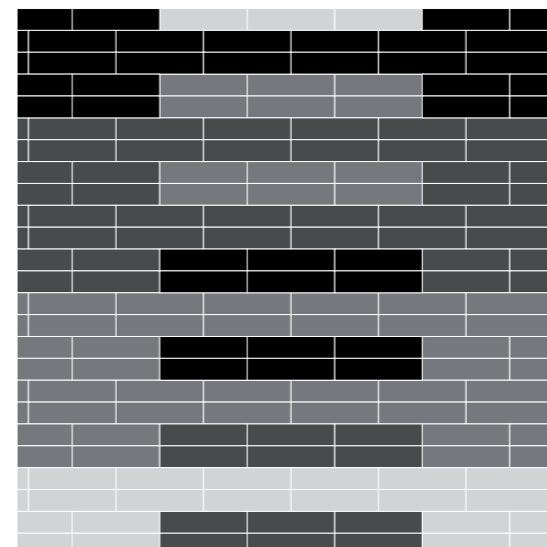
S E P E R A T E



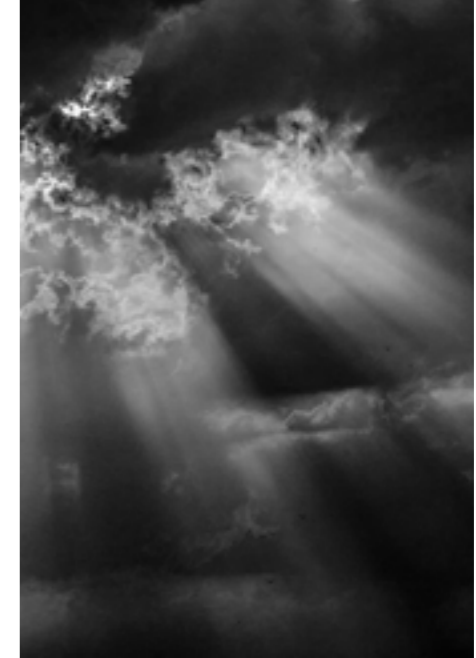
■ J2    **Sense 75025** Granite Peak



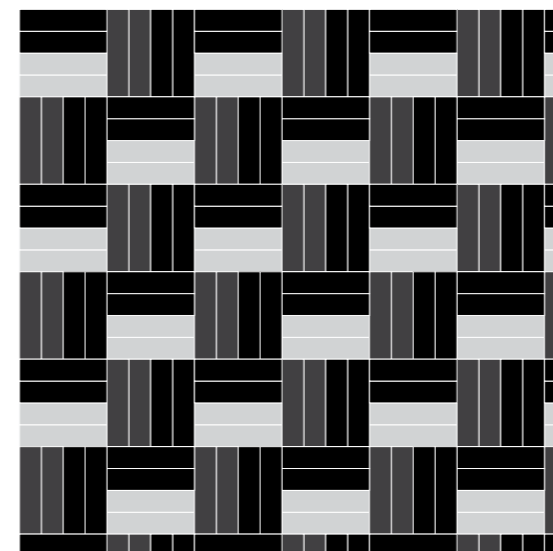
## R E L A T E D



- A3 **Sense 75016** Tricon Black
- A4 **Sense 75013** Caviar
- C1 **Sense 75010** Outerspace
- C4 **Sense 75011** Downing Slate



# D R A M A T I C



- A3    **Sense 75016** Tricon Black
- A4    **Sense 75013** Caviar
  
- B5    **Sense 75002** African Gray



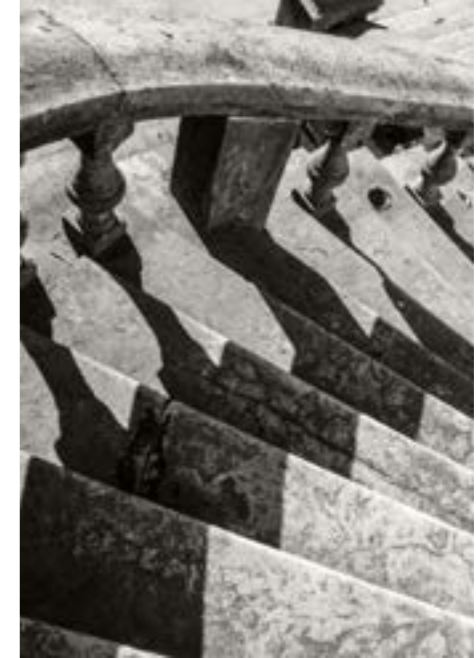
S U B T L E



■ A3    **Sense 75016** Tricon Black  
■ A4    **Sense 75013** Caviar

■ L2    **Sense 75031** Gray Matters  
■ A6    **Sense 75034** Iron Ore





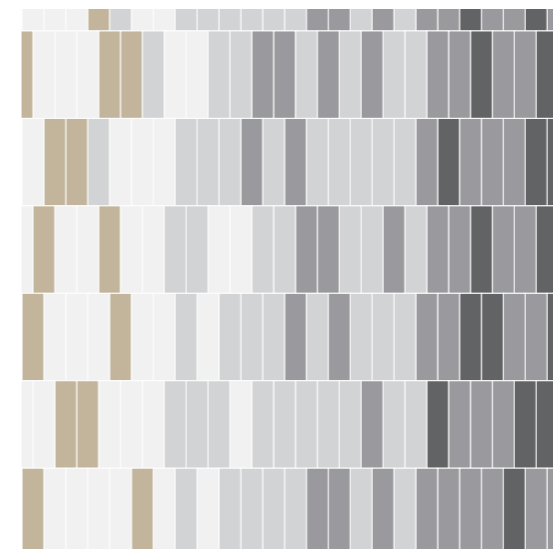
# V I B R A N T



- **A3**    **Sense 75016** Tricon Black
  
- **C1**    **Sense 75010** Outerspace
- **J2**    **Sense 75025** Granite Peak
  
- **B5**    **Sense 75002** African Gray
  
- **L6**    **Sense 75033** Mindful Gray



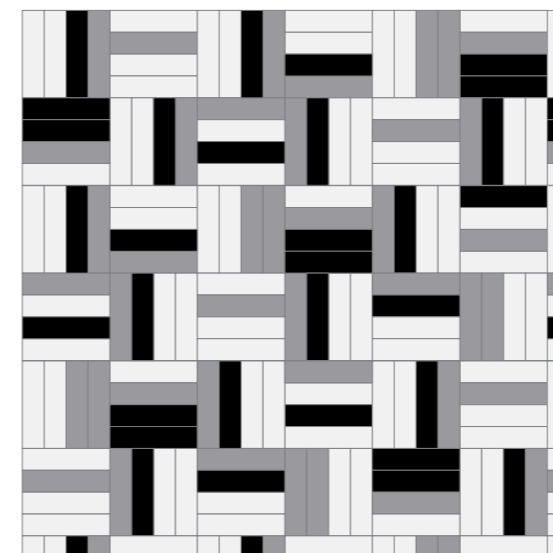
M E L L O W



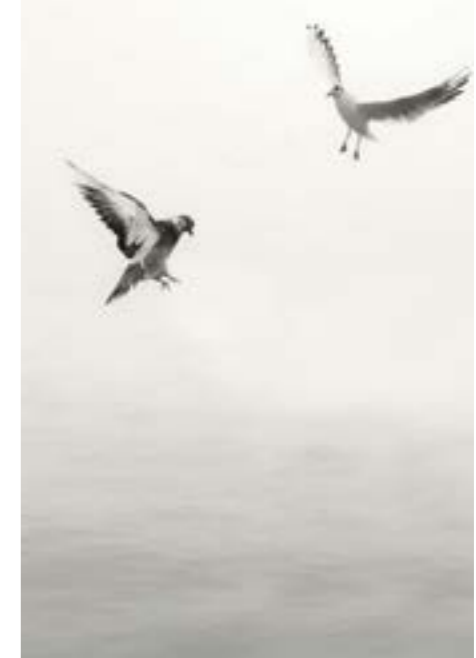
- C1    **Sense 75010** Outerspace
- C4    **Sense 75011** Downing Slate
- B5    **Sense 75002** African Gray
- B6    **Sense 75001** Icicle
- K6    **Sense 75029** Rodeo



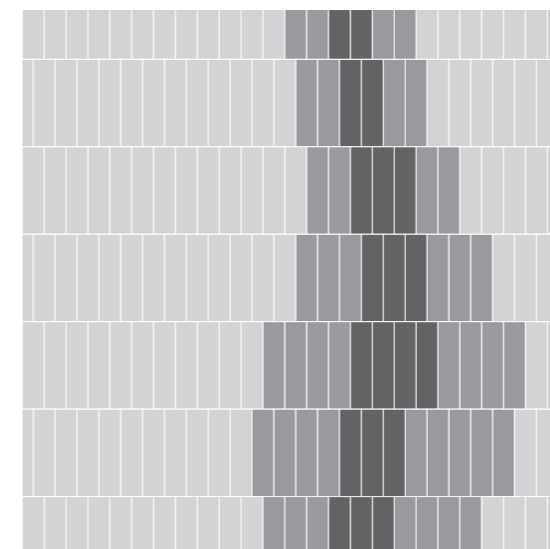
**B R I S K**



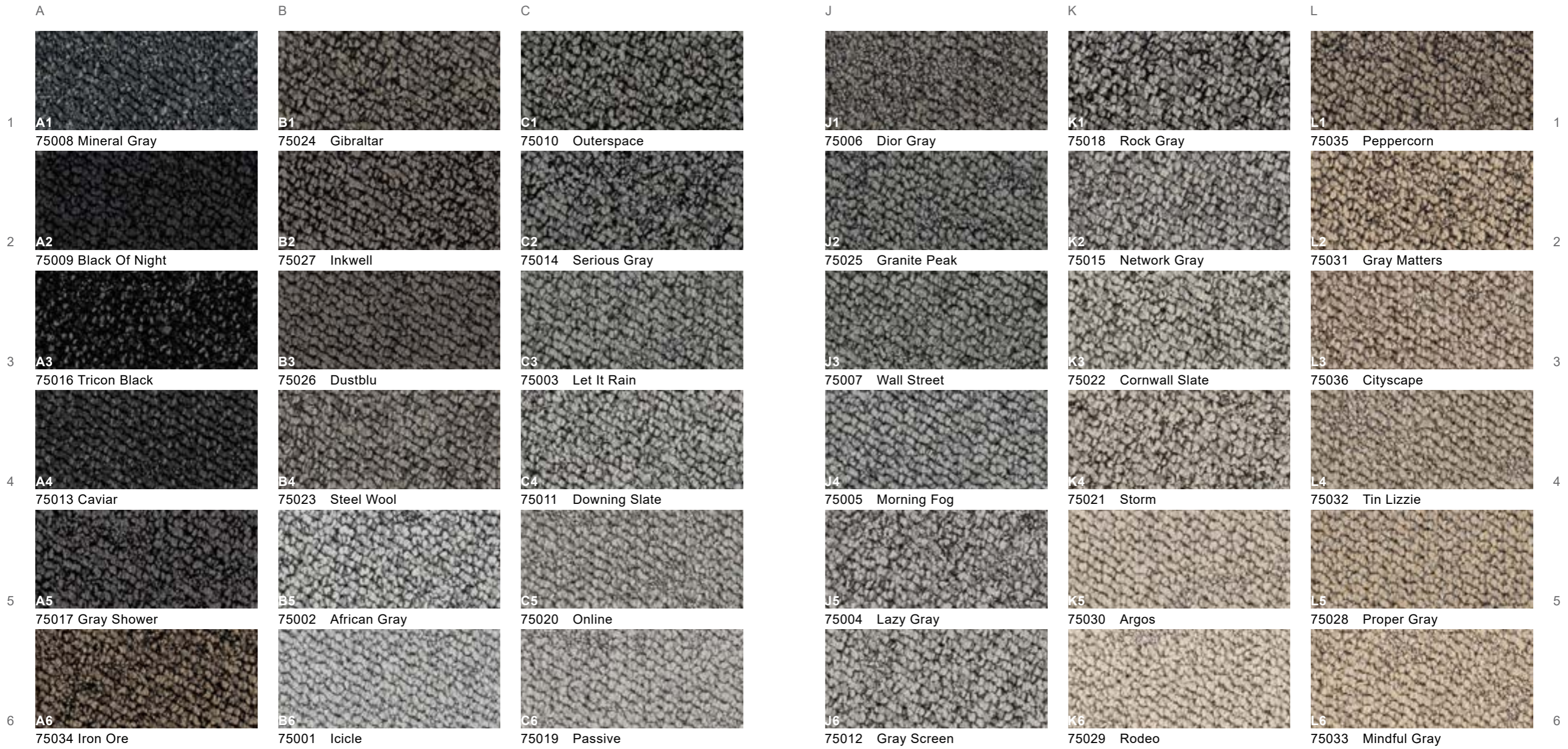
- A3** Sense 75016 Tricon Black
- C4** Sense 75011 Downing Slate
- B5** Sense 75002 African Gray



C A L M



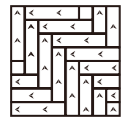
- C1 **Sense 75010** Outerspace
- J2 **Sense 75025** Granite Peak
- C4 **Sense 75011** Downing Slate
- B5 **Sense 75002** African Gray



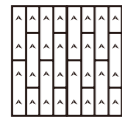
<b>75001</b> Icicle.....B6	<b>75007</b> Wall Street.....J3	<b>75013</b> Caviar.....A4	<b>75019</b> Passive.....C6	<b>75025</b> Granite Peak.....J2	<b>75031</b> Gray Matters.....L2
<b>75002</b> African Gray.....B5	<b>75008</b> Mineral Gray.....A1	<b>75014</b> Serious Gray.....C2	<b>75020</b> Online.....C5	<b>75026</b> Dustblu.....B3	<b>75032</b> TinLizzie.....L4
<b>75003</b> Let It Rain.....C3	<b>75009</b> Black Of Night.....A2	<b>75015</b> Network Gray.....K2	<b>75021</b> Storm.....K4	<b>75027</b> Inkwell.....B2	<b>75033</b> Mindful Gray.....L6
<b>75004</b> Lazy Gray.....J5	<b>75010</b> Outerspace.....C1	<b>75016</b> Tricon Black.....A3	<b>75022</b> Cornwall Slate.....K3	<b>75028</b> Proper Gray.....L5	<b>75034</b> Iron Ore.....A6
<b>75005</b> Morning Fog.....J4	<b>75011</b> Downing Slate.....C4	<b>75017</b> Gray Shower.....A5	<b>75023</b> Steel Wool.....B4	<b>75029</b> Rodeo.....K6	<b>75035</b> Peppercorn.....L1
<b>75006</b> Dior Gray.....J1	<b>75012</b> Gray Screen.....J6	<b>75018</b> Rock Gray.....K1	<b>75024</b> Gibraltar.....B1	<b>75030</b> Argos.....K5	<b>75036</b> Cityscape.....L3

# Specifications

Style Name:	Sense
Construction:	Multi-level Loop
Fiber:	Voxflor Certified Nylon
Gauge:	1/12"
Stitches:	9 per inch
Average Pile Height:	4.0mm±0.5mm
Pile Weight:	24 oz/yd <sup>2</sup>
Backing:	EcoAce-Bac ®
Tile size:	25cm*100cm
Area of Use:	Commercial - Heavy Duty
Antimicrobial:	Ultra-Fresh Treatment (Available)
Flammability:	ASTM E 648 Class I, GB8624-2012 B1(C)
Smoke Density:	ASTM E 662 Less than 450, GB/T 8627-1999
Static Propensity:	AATCC-134 ≤3.5kV, GB/T 18044-2008



Herringbone



Ashlar





*your color story*

**VOXFLO**  
[www.voxflor.com](http://www.voxflor.com)

Shanghai Headquarters  
T +86 021 62989325

Milano Creative Studio  
T +39 3885863150

Santiago LATAM Office  
T +56 9 9824 1739

China Branch Office  
Beijing/ Guangzhou/ Shenzhen/ Xiamen  
T 400 021 0790

