

# MORNING MIST

VOXFLO<sup>R</sup>



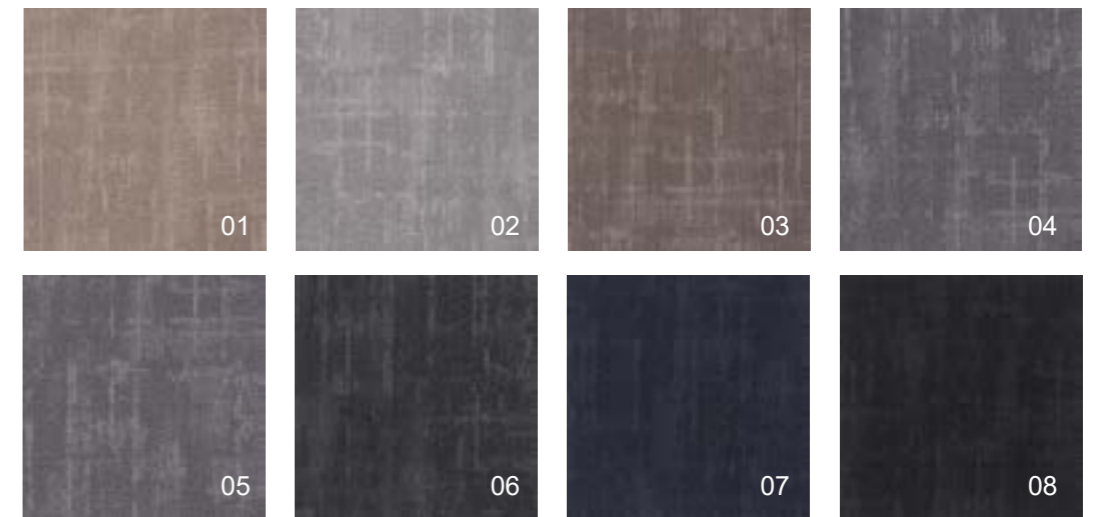
Morning Mist 06, Quarter-turn





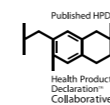
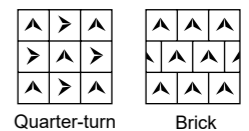
Morning Mist 05, Quarter-turn

## Colors



## Specifications

Style Name:	Morning Mist
Construction:	Multi-level Loop
Fiber:	Voxflor Certified Nylon
Gauge:	1/12"
Stitches:	11 per inch
Average Pile Height:	4mm±0.5mm
Backing:	EcoAce-Bac®
Tile size:	50cm*50cm
Area of Use:	Commercial - Heavy Duty
Anti-microbial:	Health Guard (Available)
Flammability:	ASTM E 648 Class I, GB8624-2012 B1(C)
Smoke Density:	ASTM E 662 Less than 450, GB/T 8627-1999
Static Propensity:	AATCC-134 ≤3.5kV, GB/T 18044-2008





*your color story*

## **VOXFLOR**

[www.voxflor.com](http://www.voxflor.com)

Shanghai Headquarters

T +86 021 62989325

Milano Creative Studio

T +39 3885863150

Santiago LATAM Office

T +56 9 9824 1739

China Branch Office

Beijing/ Guangzhou/ Shenzhen/ Xiamen

T 400 021 0790

