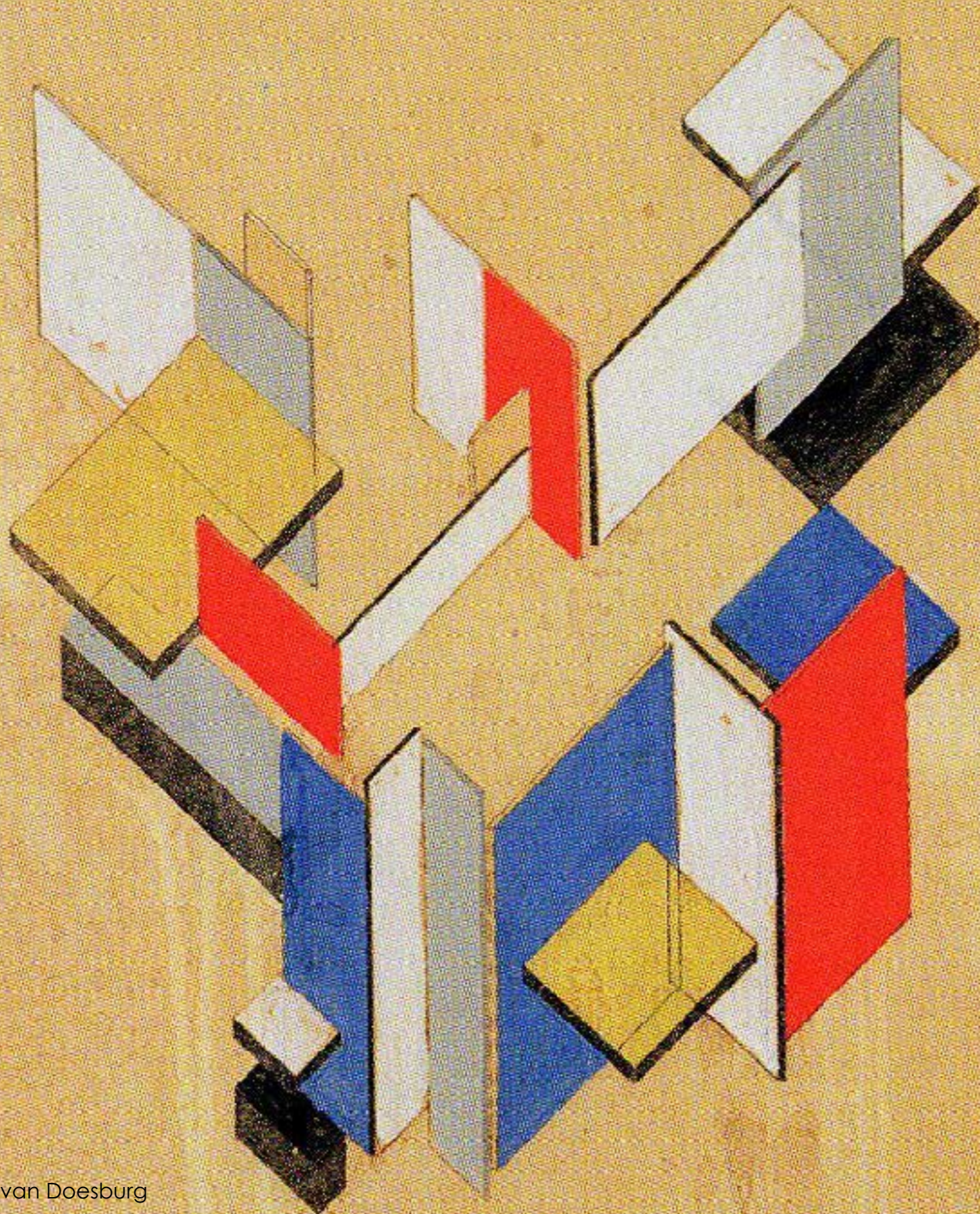


MONDRIAN



Theo van Doesburg

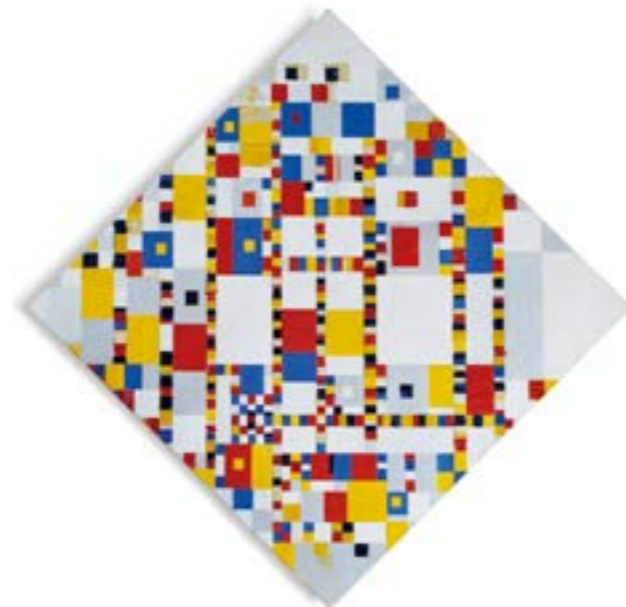
Everything is expressed through relationship. Colour can exist only through other colours, dimension through other dimensions, position through other positions that oppose them. That is why I regard relationship as the principal thing.

Piet Mondrian



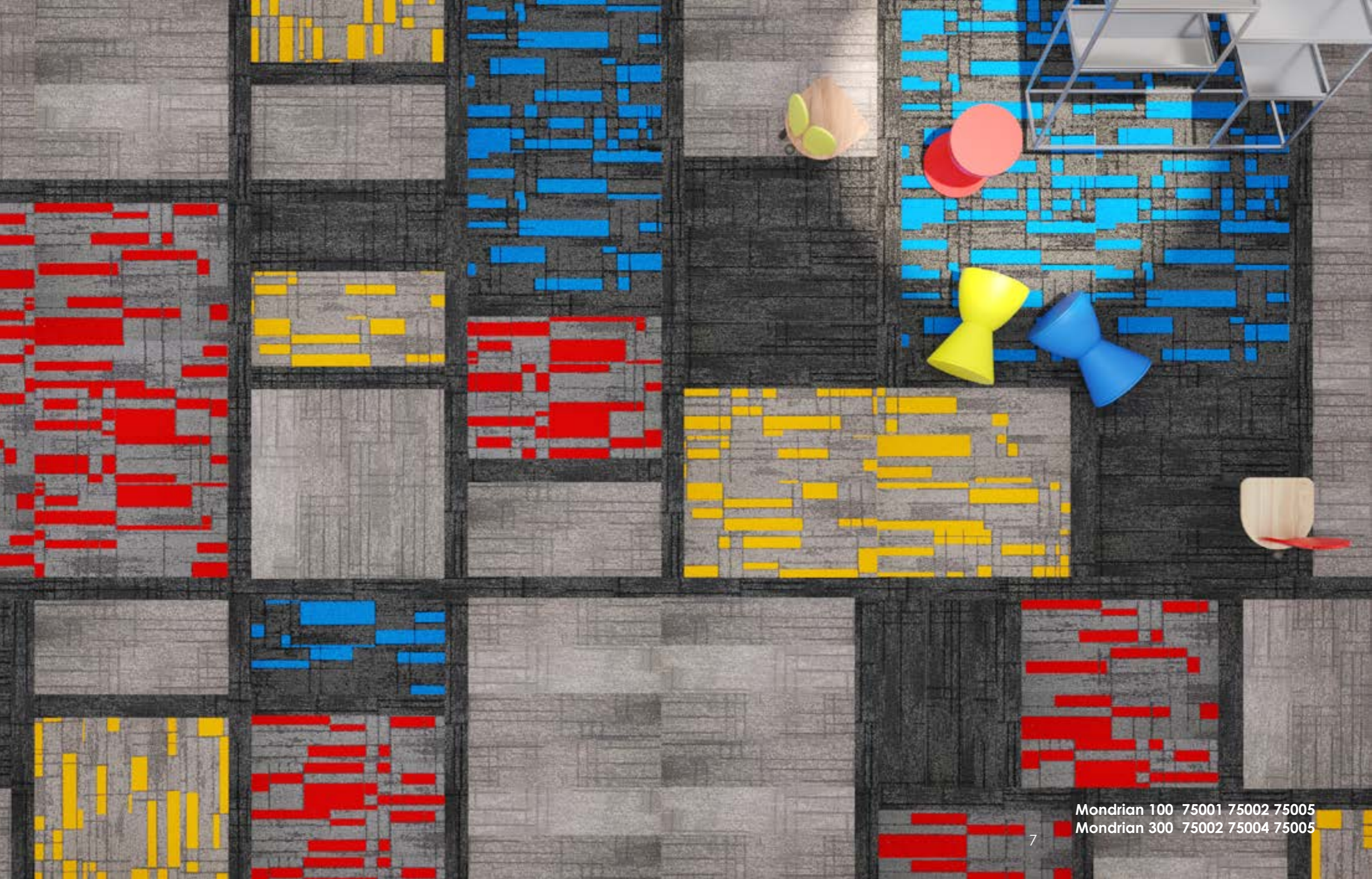
Piet Mondrian, was a Dutch painter and theoretician who is regarded as one of the greatest artists of the 20th century. He is known for being one of the pioneers of 20th century abstract art, as he changed his artistic direction from figurative painting to an increasingly abstract style, until he reached a point where his artistic vocabulary was reduced to simple geometric elements.

De Stijl

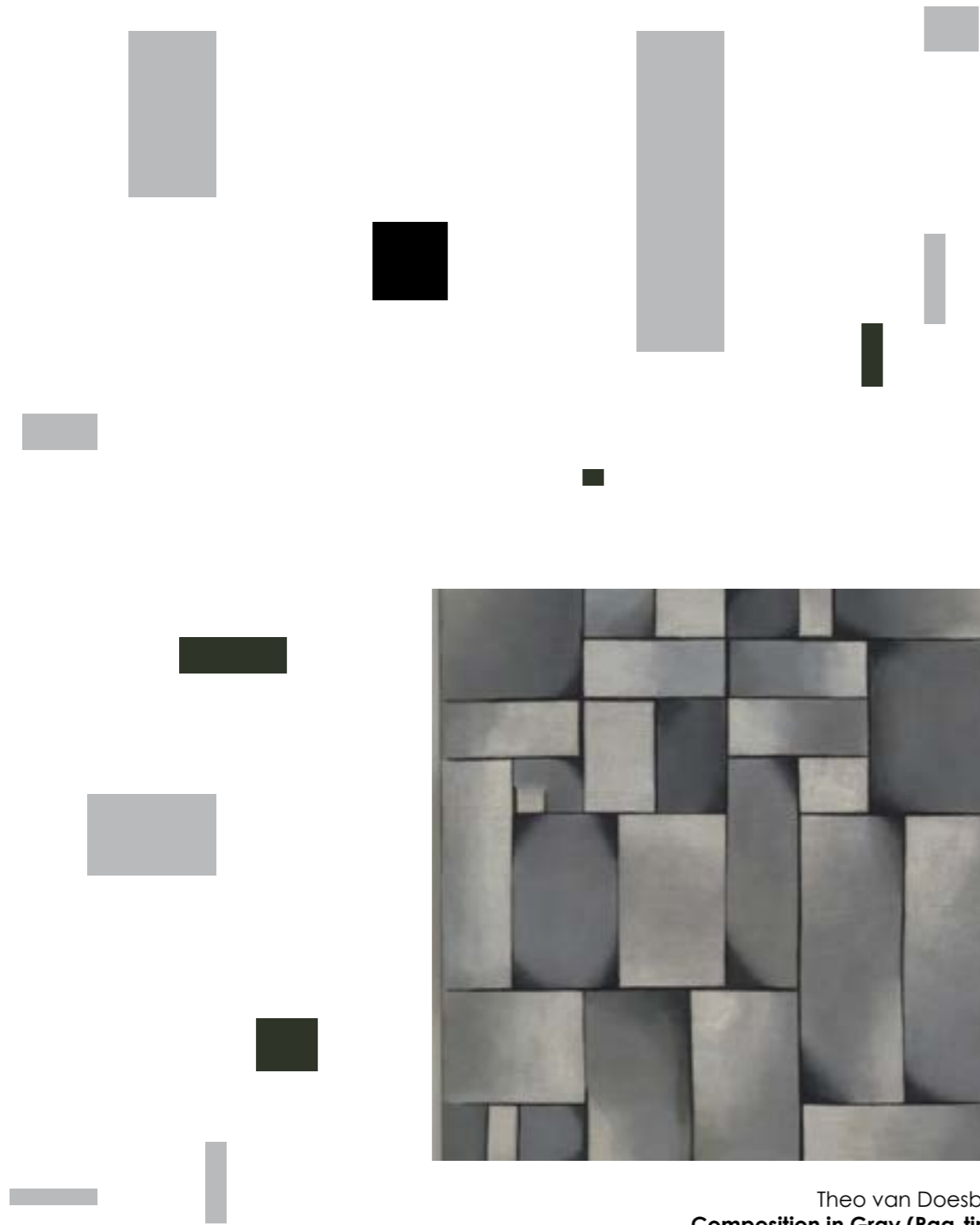


De Stijl, Dutch for "The Style", also known as Neoplasticism, was a Dutch art movement founded in 1917 in Leiden. *De Stijl* consisted of artists and architects. In a narrower sense, the term *De Stijl* is used to refer to a body of work from 1917 to 1931 founded in the Netherlands. Proponents of *De Stijl* advocated pure abstraction and universality by a reduction to the essentials of form and colour; they simplified visual compositions to vertical and horizontal, using only black, white and primary colors.

De Stijl is also the name of a journal that was published by the Dutch painter, designer, writer, and critic **Theo van Doesburg** that served to propagate the group's theories. Along with van Doesburg, the group's principal members were the painters **Piet Mondrian**, Vilmos Huszár, Bart van der Leck, and the architects **Gerrit Rietveld**, Robert van 't Hoff, and J. J. P. Oud.



Mondrian 100 75001 75002 75005
Mondrian 300 75002 75004 75005



Theo van Doesburg
Composition in Gray (Rag-time)
1919



Mondrian basic



Mondrian 200 75001 basic
Mondrian 300 75001 basic



Mondrian 200 75001 basic
Mondrian 300 75001 basic



Theo van Doesburg
Composition IX
1916



Mondrian 100



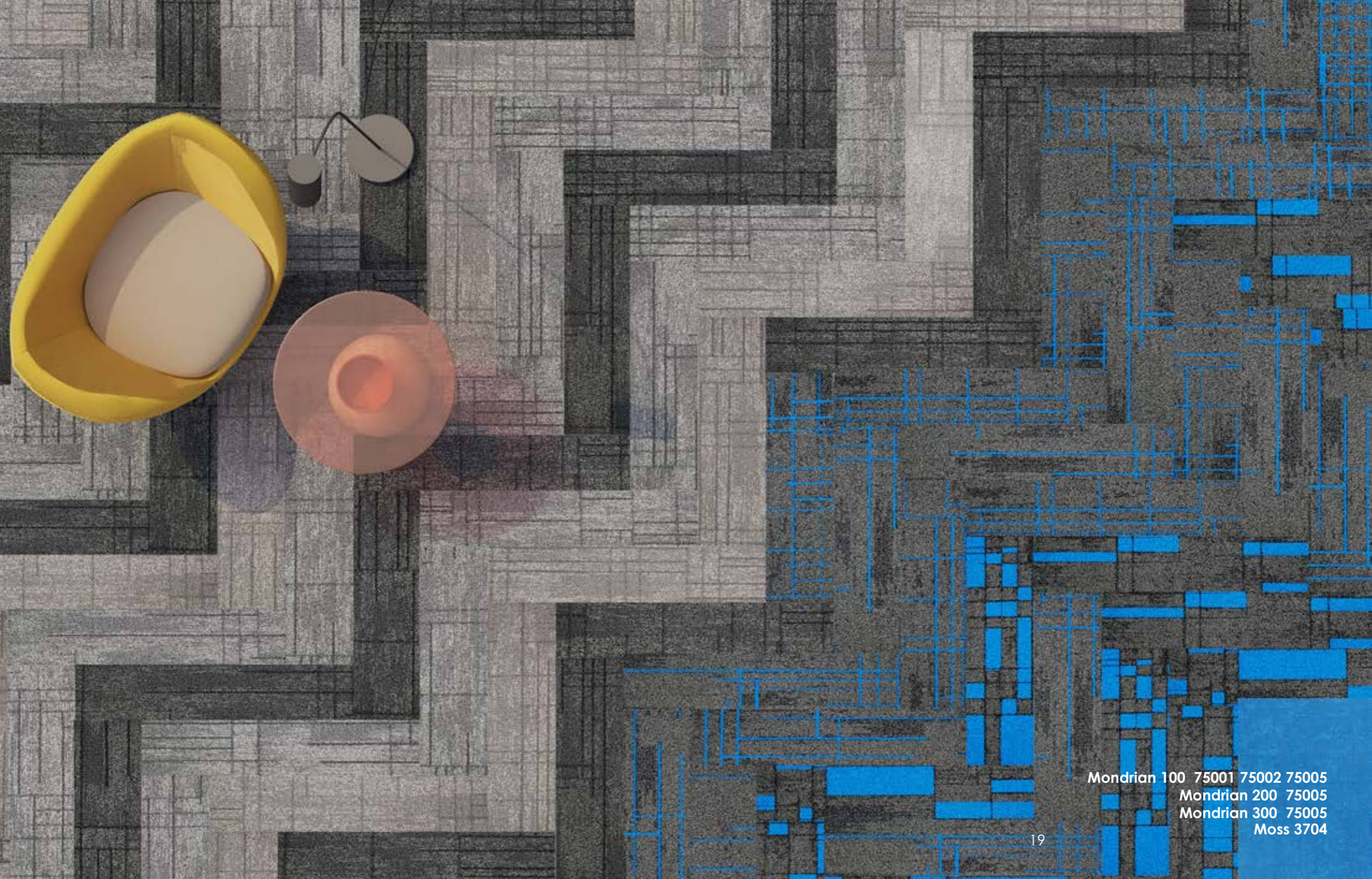
Theo van Doesburg
Counter Composition XIII
1929



Van Doesburg and Rietveld interior
Rijksmuseum, Amsterdam
1919



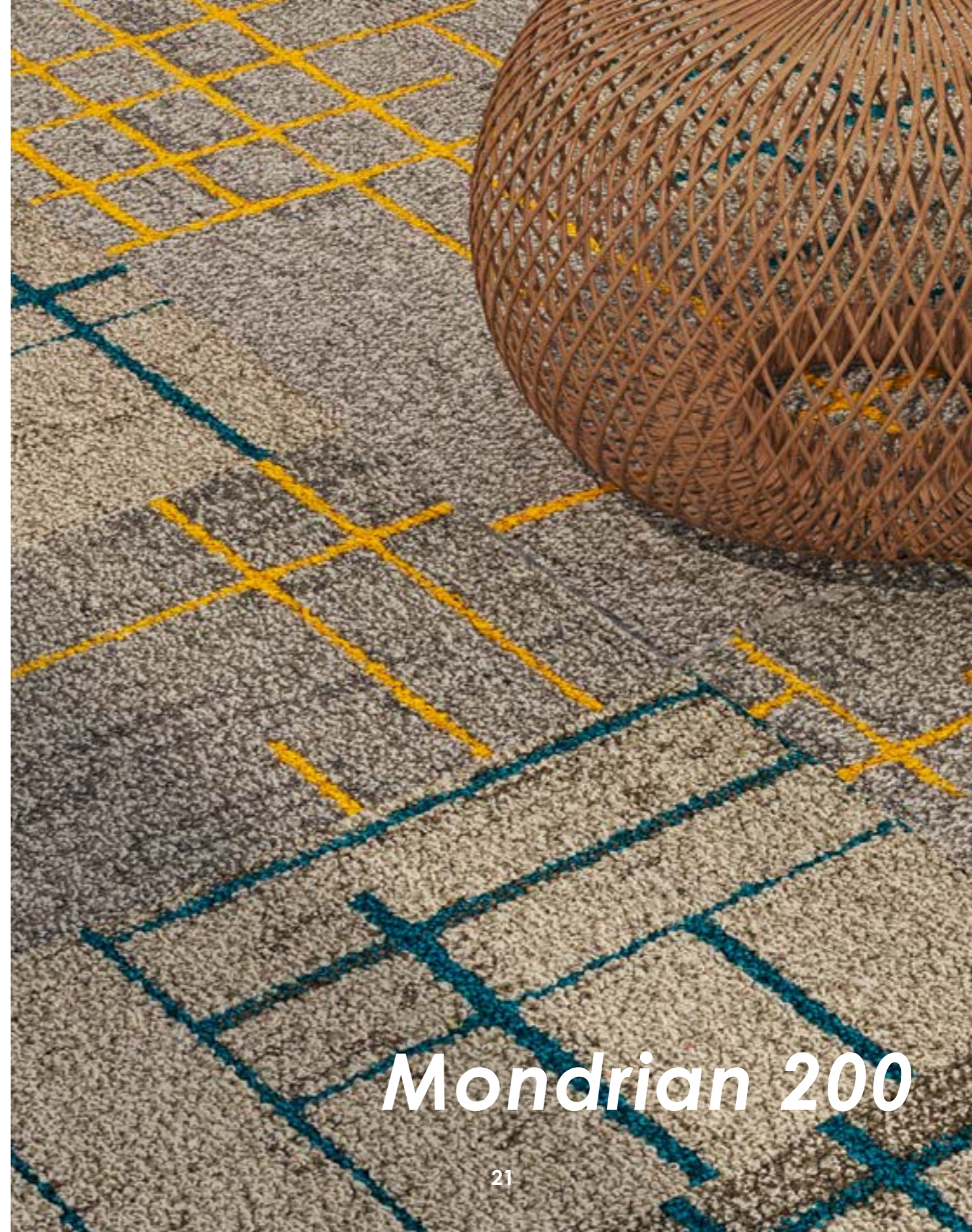
Mondrian 100 75001 75002 75005
Moss 3704



Mondrian 100 75001 75002 75005
Mondrian 200 75005
Mondrian 300 75005
Moss 3704



Piet Mondrian
Tableau No. 2/Composition No. VII
1913

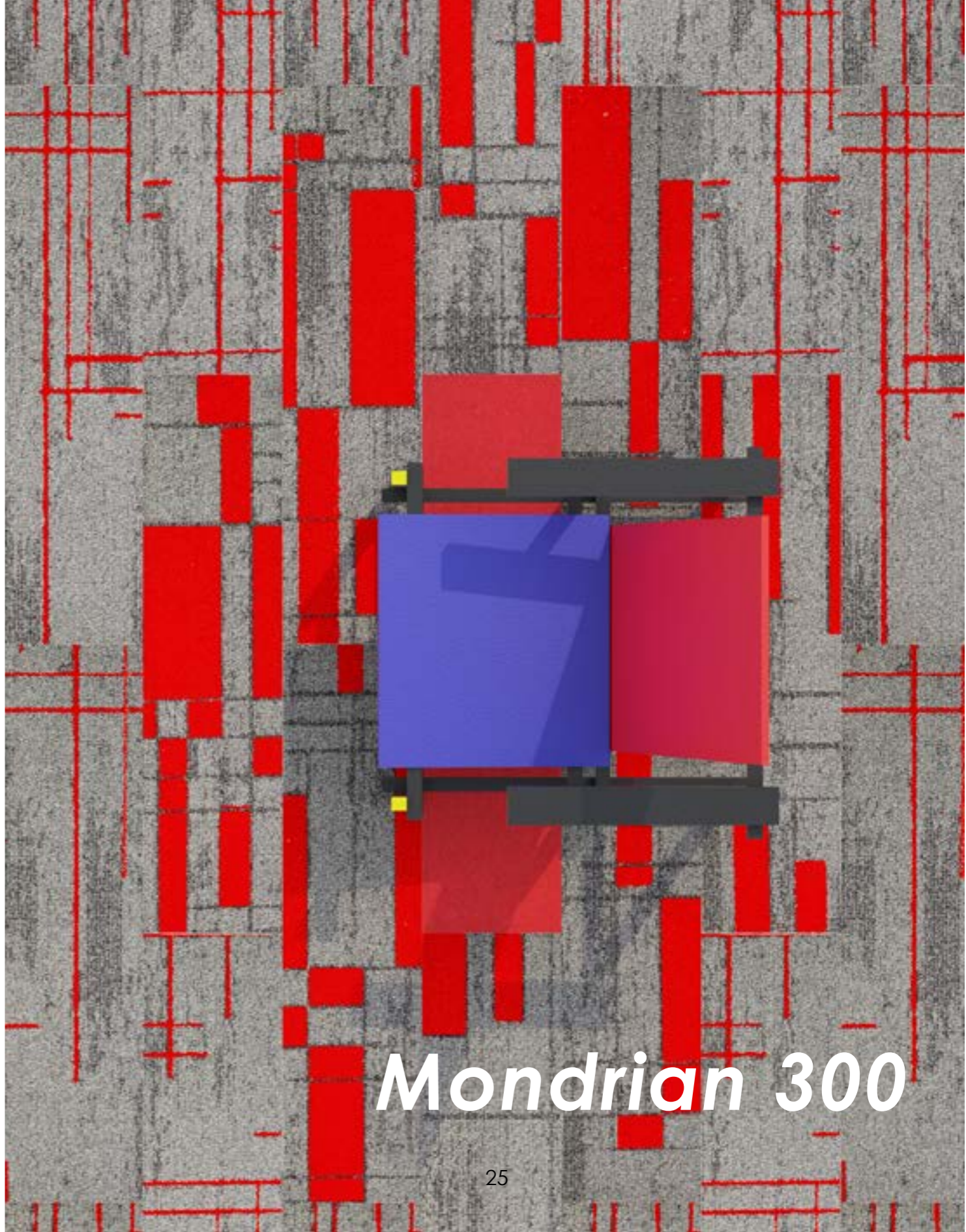


Mondrian 200





Gerrit Rietveld
Red Blue Chair
1917



Mondrian 300





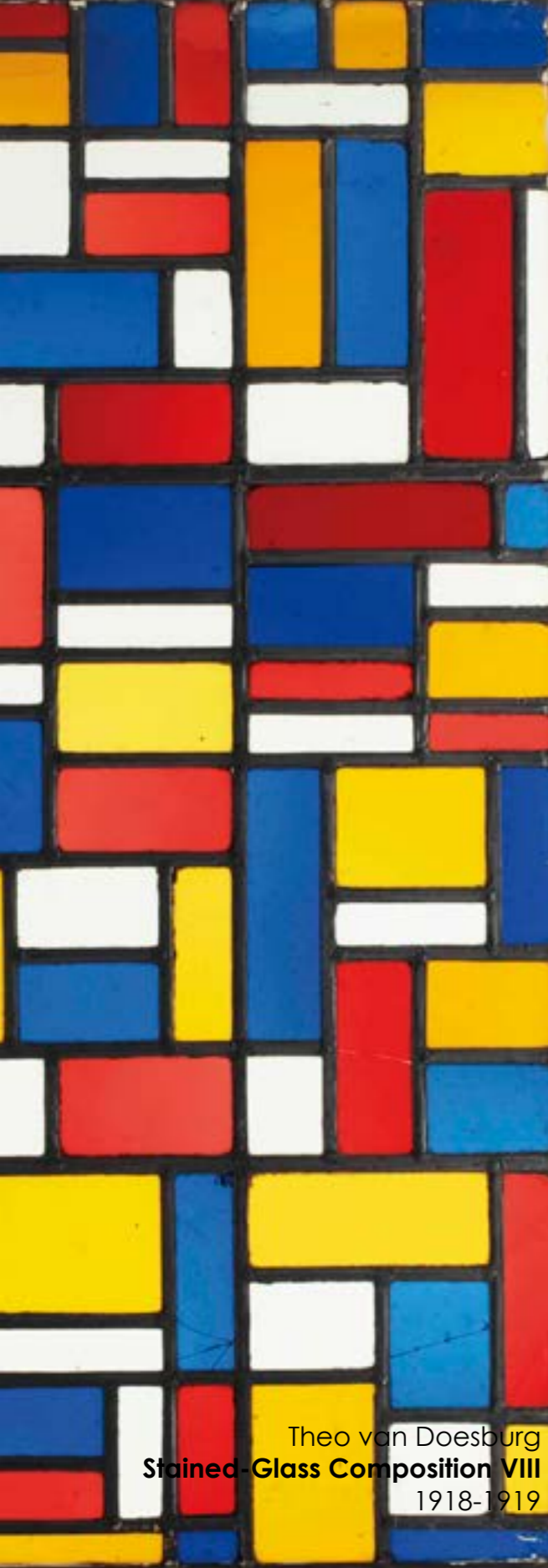
Plan 3. plafond avec 2 bords de la grande salle de l'Aubette à Strasbourg.

Les couleurs sont à l'échelle.

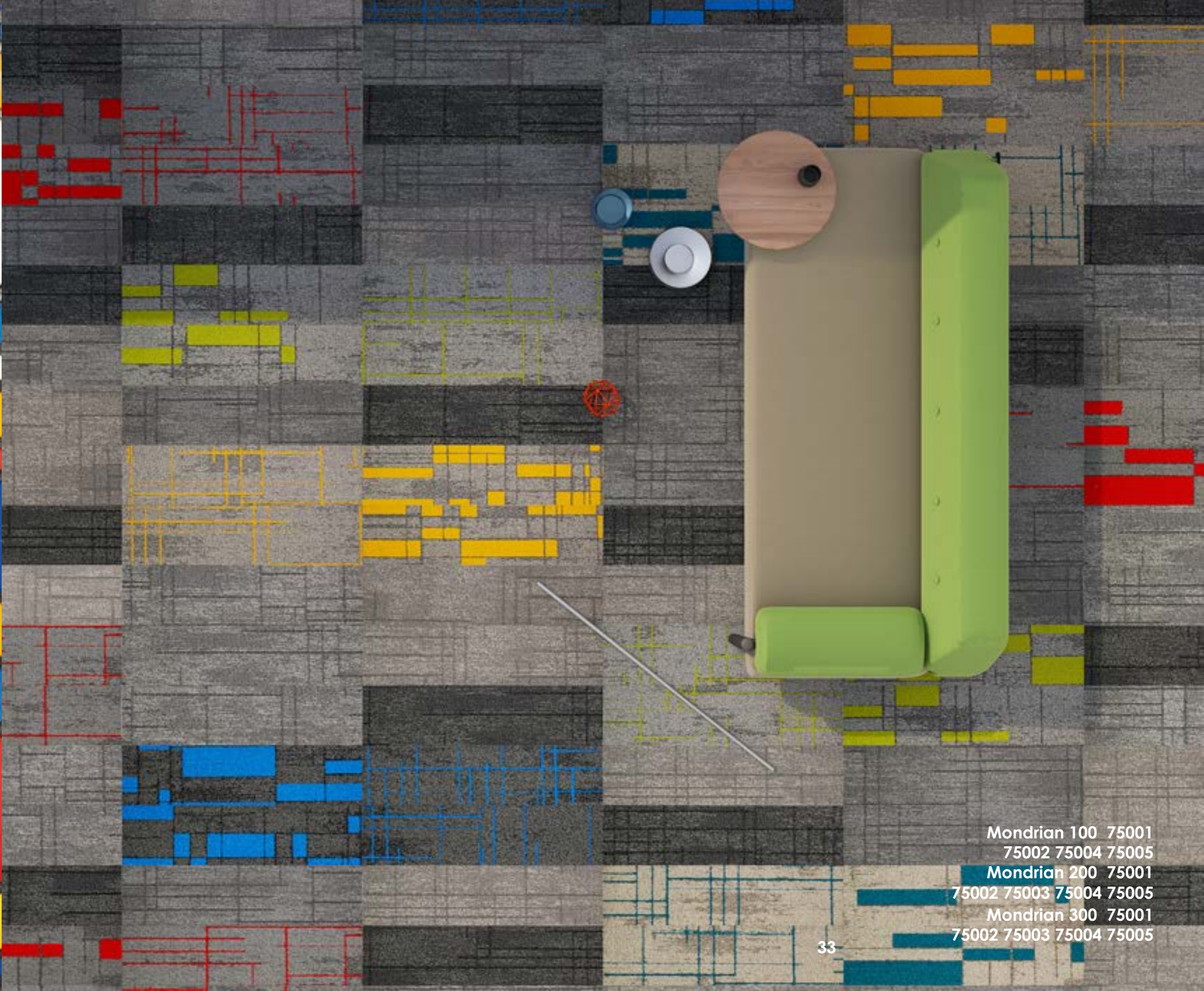
Theo van Doesburg
**Preliminary color scheme for ceiling and short walls of dance hall in Café Aubette,
Strasbourg, France**
1926-1928



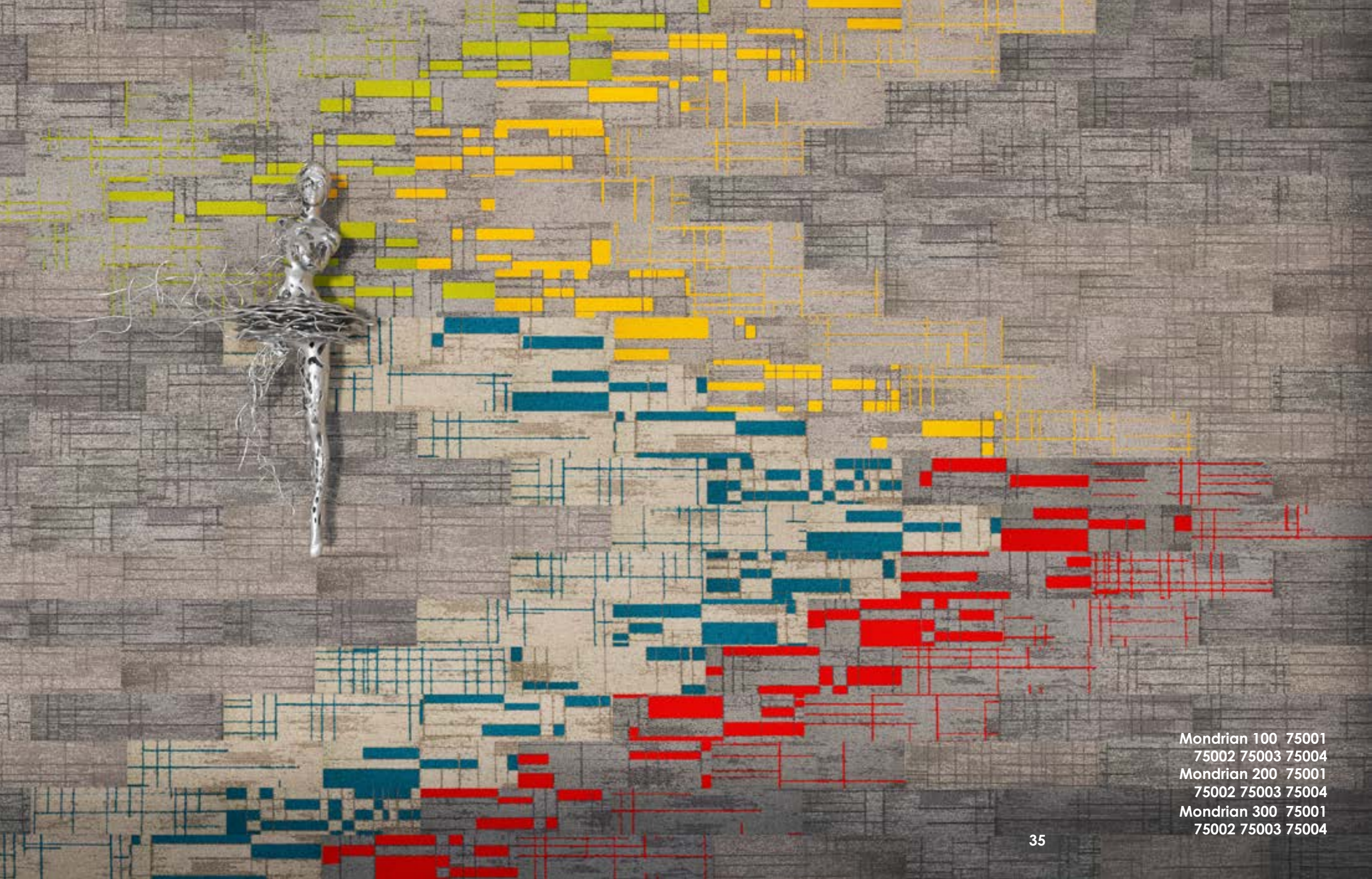
Mondrian 200 75003
Mondrian 300 75003
Moss 8561



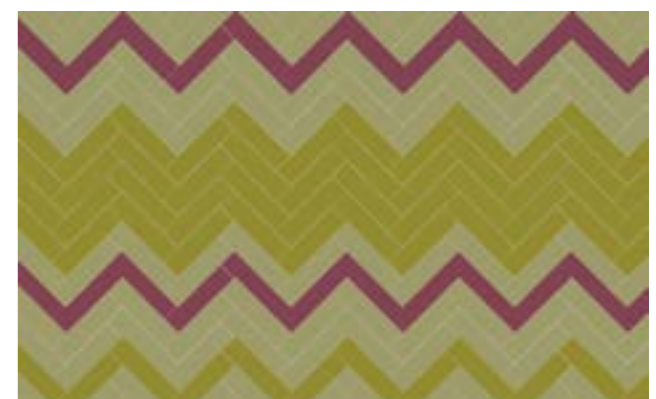
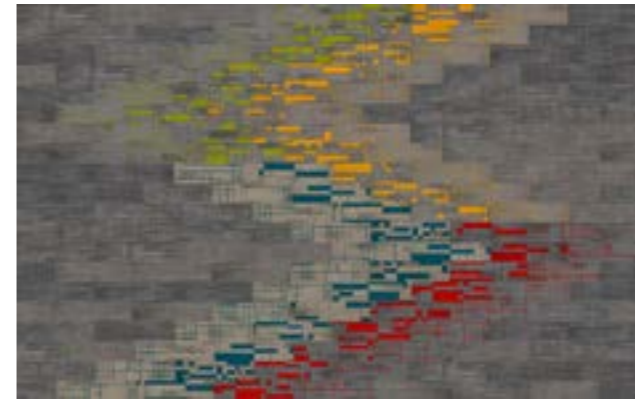
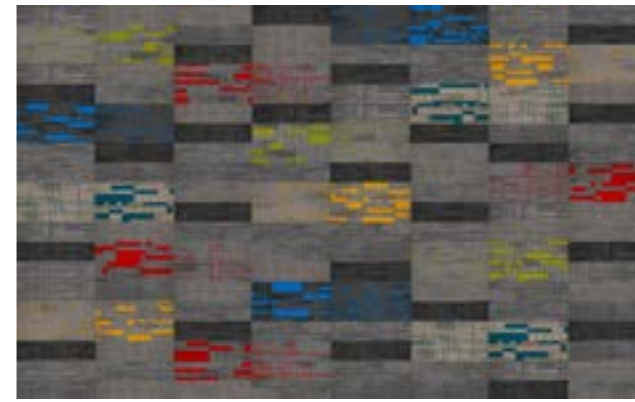
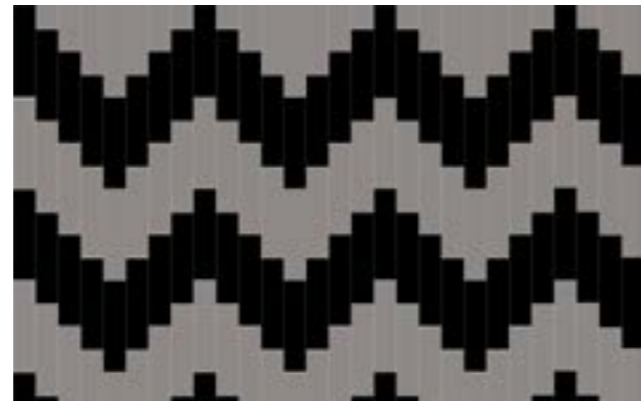
Theo van Doesburg
Stained-Glass Composition VIII
1918-1919



Mondrian 100 75001
75002 75004 75005
Mondrian 200 75001
75002 75003 75004 75005
Mondrian 300 75001
75002 75003 75004 75005



Mondrian 100 75001
75002 75003 75004
Mondrian 200 75001
75002 75003 75004
Mondrian 300 75001
75002 75003 75004



COLORS

Mondrian 100



Mondrian 200



Mondrian 300



75001



75001



75001



75002



75002



75001 basic



75003



75003



75002



75004



75004



75003



75004 basic



75004



75005



75005



75004 basic



75005

SPECIFICATIONS

Style Name:	Mondrian 100 Mondrian 200 Mondrian 300
Construction:	Multi-level Loop
Fiber:	Voxflor Certified Nylon
Gauge:	1/12" 1/10" 1/10"
Stitches:	13 10 10 per inch
Average Pile Height:	4.0m ± 0.5mm
Average Pile Weight:	18 24 26 oz/yd ²
Backing:	EcoAce-Bac®
Tile size:	25cm*100cm
Area of Use:	Commercial - Heavy Duty
Antimicrobial:	Ultra-Fresh Treatment (Available)
Flammability:	ASTM E 648 Class I, GB8624-2012 B1(C)
Smoke Density:	ASTM E 662 Less than 450, GB/T 8627-1999
Static Propensity:	AATCC-134 ≤3.5kV, GB/T 18044-2008



Ultra-Fresh is a registered trademark of Thomson Research Associates, Inc.



your color story

VOXFLOR

www.voxflor.com

Shanghai Headquarters

T +86 021 62989325

Milano Creative Studio

T +39 3885863150

Santiago LATAM Office

T +56 9 9824 1739

China Branch Office

Beijing/ Guangzhou/ Shenzhen/ Xiamen

T 400 021 0790

