

MERE COLOR



Instagram:
[voxflor_official](#)



LinkedIn:
[voxflor](#)



Facebook:
[voxflor](#)



Youtube:
[voxflor_official](#)



VOXFLO^R

www.voxflor.com

Shanghai **Headquarters**

T +86 21 62989325

Milano **Creative Studio**

T +39 3885863150

China **Branch Offices**

Beijing/ Guangzhou/ Shenzhen/ Xiamen

T 400 021 0790



VOXFLO^R
Your color story

A Behind Thinking Of The Popularity Of Morandi's Color

The influence of color on human psychology is more and more accepted by the public. When Giorgio Morandi's works were discovered, our world seemed to be drawn into another dimension-the crisp bird song replaced the bustling traffic, the simple lifestyle replaced the prosperous material pleasure... The artist's life attitude and works of returning to the basics have become the spiritual comfort of the current workers.

MERE COLOR uses a cut pile process with low saturation color solutions, allowing texture and color to work together to create a peaceful and harmony ground effect. In addition, it is also a group of products with low selection load designers can easily choose color combinations from them.

This low-burdened product is our response to the popularity of Morandi's color.









...ues in Architecture go beyond
nic form compositions. An
hmic without being harmonic.



Mere Color
K01 Dusty Blue | L01 Frosted Petal



Mere Color
C01 Batbout | E02 Sand Stream | F01 Myrrh | F02 Fossil

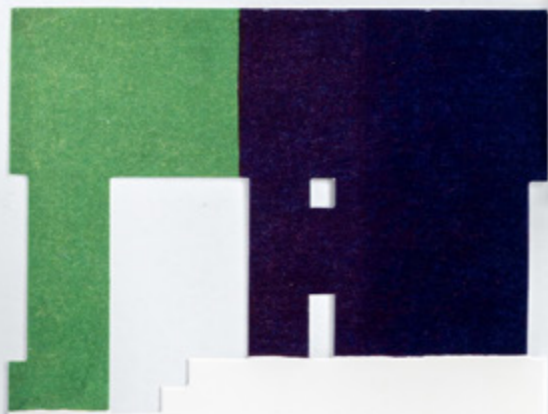


Mere Color
L01 Frosted Petal | L02 Red Rock





Renaissance architecture was a mixture of religion and rationality. In our times architecture is a mixture of spiritualism and technology.



Aesthetics in Art and Architecture speak to our primordial unconscious.



Mere Color
E01 Gray Morn | G01 Tear Drop | J02 Malachite | K02 Blue Moment



Mere Color

A01 Baked Clay | **B01** Arabesque | **C01** Batbout | **D01** Olive Blossom | **E01** Gray Morn | **F01** Myrrh |
G01 Tear Drop | **I01** Light Pistachio | **J01** Antiguan Sky | **K01** Dusty Blue | **L01** | **H01** Soot | **H02** Black Ink

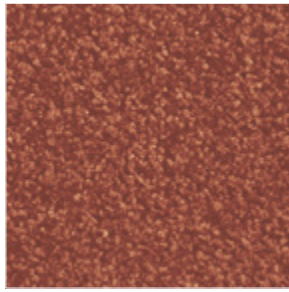


Mere Color

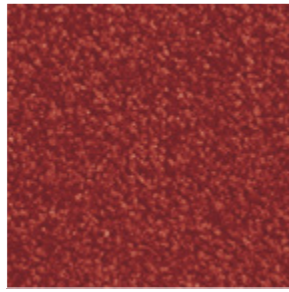
A01 Baked Clay | **A02** Bossa Nova | **J01** Antiguan Sky | **J02** Malachite |
L01 Frosted Petal | **L02** Red Rock | **G01** Tear Drop



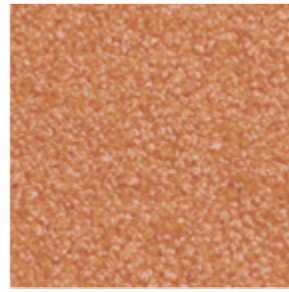
Colors



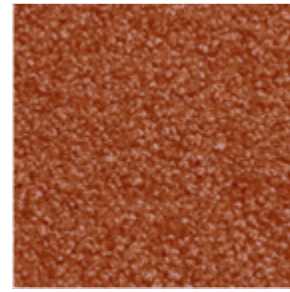
A01
Baked Clay



A02
Bossa Nova



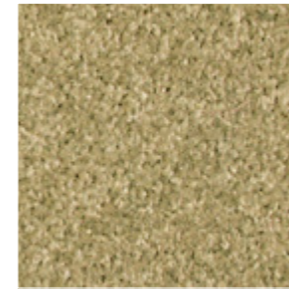
B01
Arabesque



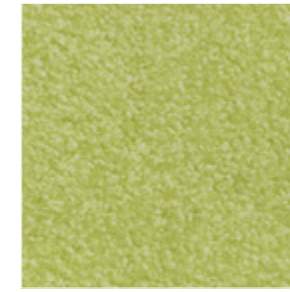
B02
Ginger Ninja



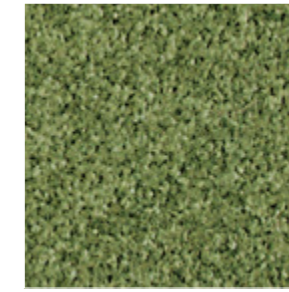
C01
Batbout



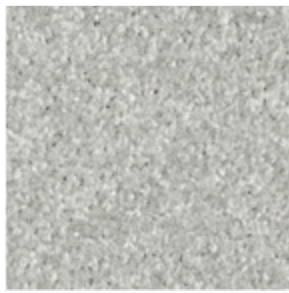
C02
Pumpkin Truffle
No.1



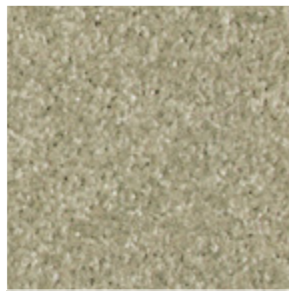
D01
Olive Blossom



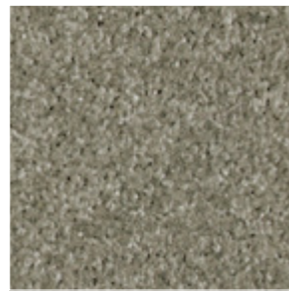
D02
Rose of Jericho



E01
Gray Morn



E02
Sand Stream



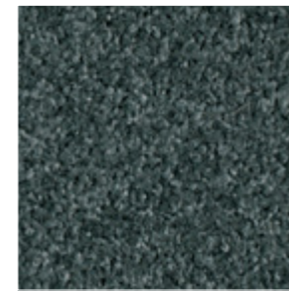
F01
Myrrh



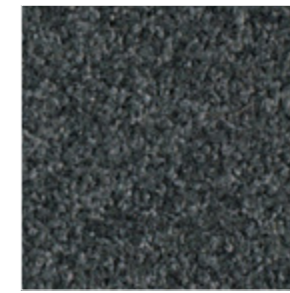
F02
Fossil



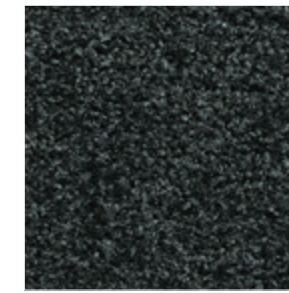
G01
Tear Drop



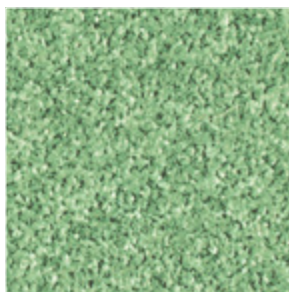
G02
Lead Gray



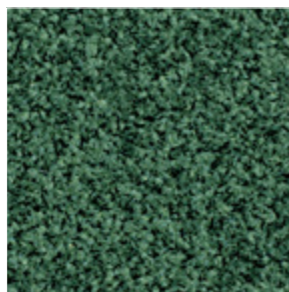
H01
Soot



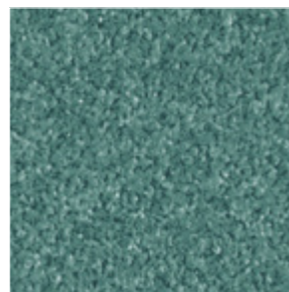
H02
Black Ink



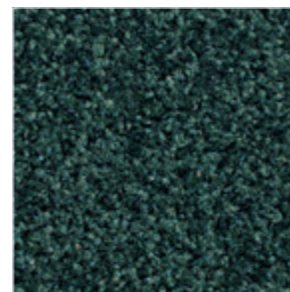
I01
Light Pistachio



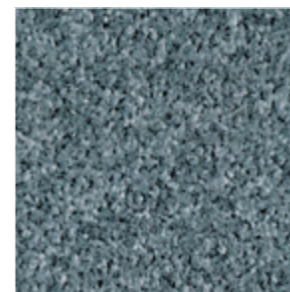
I02
Mist Green



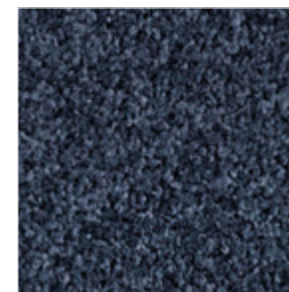
J01
Antiguan Sky



J02
Malachite



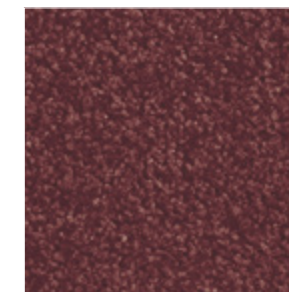
K01
Dusty Blue



K02
Blue Moment



L01
Frosted Petal

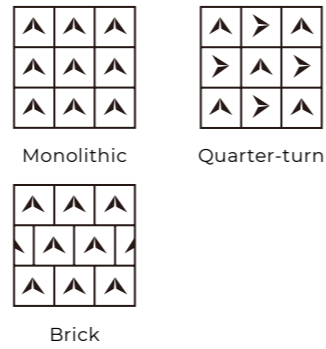


L02
Red Rock

Specifications

Style Name:	Mere Color
Construction:	Cut Pile
Fiber:	INVISTA® Nylon 66
Gauge:	1/10"
Stitches:	10 per inch
Average Pile Height:	5.0 ± 0.5mm
Pile Weight:	26 oz/yd ²
Backing:	EcoAce-Bac®
Tile size:	50 x 50cm
Area of Use:	Commercial - General Duty
Antimicrobial:	Ultra-Fresh Treatment (Available)
Flammability:	ASTM E 648 Class I, GB8624-2012 B1(C)
Smoke Density:	ASTM E 662 Less than 450, GB/T 8627-1999
Static Propensity:	AATCC-134 ≤3.5kV, GB/T 18044-2008

Installation Methods



Further Info



GLP NO.: 100231

Declare.



OHSAS18001:2007



ISO9001:2008



ISO14001:2004

Criteria Contribution For



Ultra-Fresh is a registered trademark of Thomson Research Associates, Inc.

"Mere color, unspoiled by meaning, and unallied with definite form, can speak to the soul in a thousand different ways." Oscar Wilde