

BOLON

店舖施工例実績集



PROJECTS WE LOVE



PROJECT INFORMATION

Project: プロジェクト Bene Showroom
City/country: 市/国 Cologne, Germany
Architect: 設計 Inhouse
Collection: シリーズ Bolon Studio™ Scale;
Flow Stream, Coral
Area: 面積 65 m²
Year: 竣工 2016



BENE SHOWROOM GERMANY

With a history dating back 225 years, Bene group is an international design and furnishing specialist offering inspiring solutions for work environments. With operations in more than 40 countries, this quality driven company is proud to be a full service provider. For this creative space located in Cologne, Germany, 65 square meters of Bolon Studio™ Scale Tiles was chosen to be installed. The soft pastel shades from the Flow collection created a calm atmosphere in the Idea Lab area of the Bene showroom. By bringing the tiles up onto the walls, the design fluidity of Flow Stream, Alga, Coral and Shell is beautifully showcased.

BOLON

ADVAN CO., LTD. 4-32-14 Jingumae Shibuya-ku Tokyo
TEL 03 3475 0281 FAX 03 3475 0280 <http://www.advan.co.jp>

PROJECTS WE LOVE



PROJECT INFORMATION

Project: プロジェクト Daniel Wellington
City/country: 市/国 Hollywood & Highland
Los Angeles, US
Architect: 設計 Inhouse
Collection: シリーズ Create Fabrico
Area: 面積 100 m²
Year: 竣工 2017



DANIEL WELLINGTON US

At the new Hollywood store, our Create Fabrico flooring contributes to creating this dynamic, adding colour, warmth and vibrancy to the customer's retail experience. Carefully chosen to harmonise with the store's other colours and materials, the flooring's interaction with the interior's dramatic lighting offers a visual treat wherever you find yourself in the store. Why not drop by and see for yourself?

BOLON

ADVAN CO., LTD. 4-32-14 Jingumae Shibuya-ku Tokyo
TEL 03 3475 0281 FAX 03 3475 0280 <http://www.advan.co.jp>



FontanaArte Showroom in Milan, Italy



The architect and design studio Calvi & Brambilla designed the new flagship store for FontanaArte in Milan with an obvious focus on the company's products. The sober and slightly dark interior gives the products the full chance to glow. The 250 square metres big floor is filled with custom-made rhomes in Botanic Picea in an enthralling way.

BOLON



Gulled in Gothenburg, Sweden

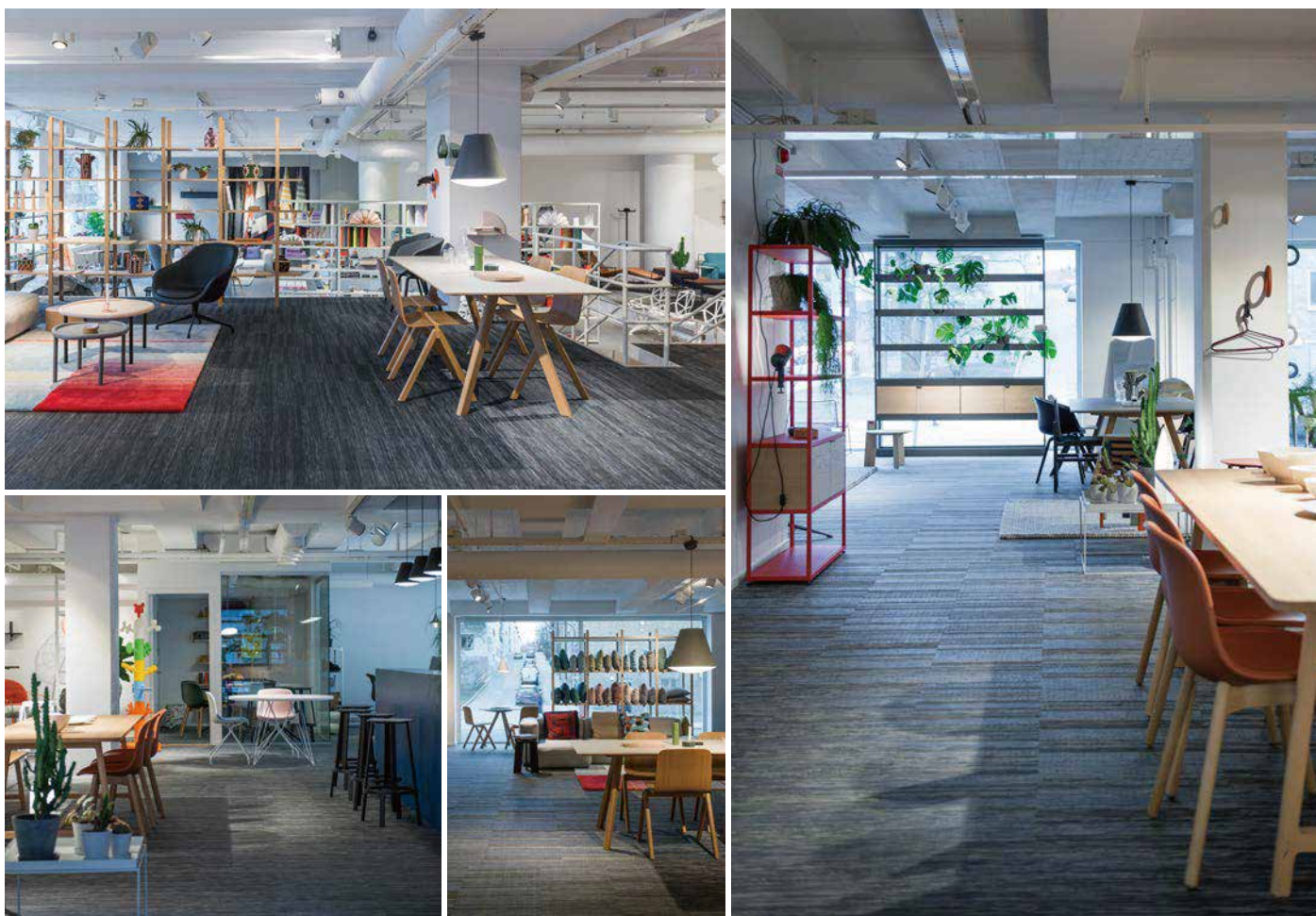


Gulled is a Swedish agency working with the design brands HAY, Tom Dixon and Magis. The agency chose to install 150 square meters of Silence Visual in their new showroom in Gothenburg. The showroom is at the ground floor of an old building in the centre of the city where beautiful windows are overlooking the street. The natural light from the windows highlights the pattern and tactile feel in the flooring.

BOLON



Gulled in Stockholm, Sweden

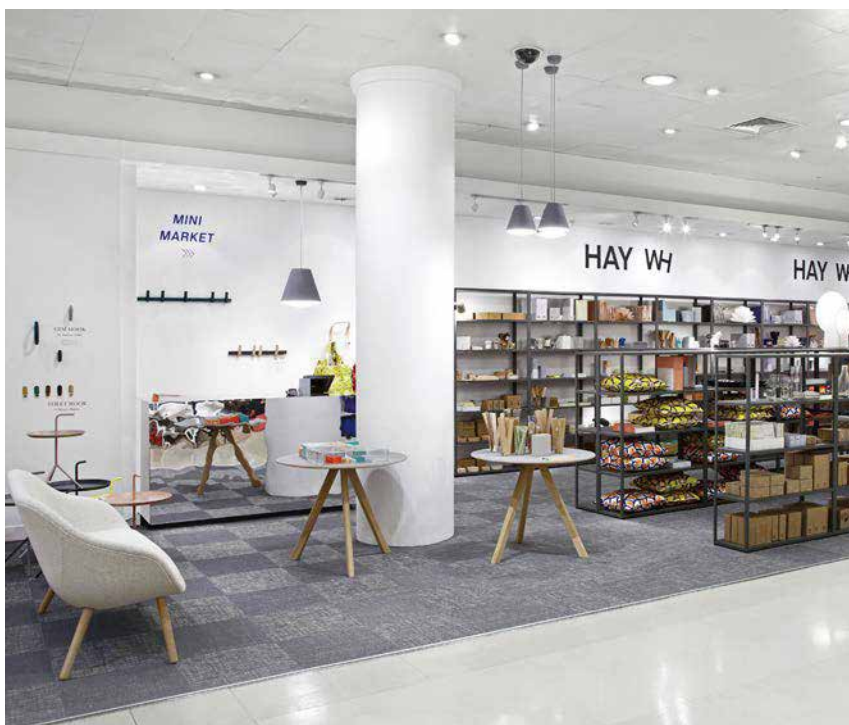


Gulled is a Swedish agency working with the design brands HAY, Tom Dixon and Magis. The agency chose to install 250 square meters of Graphic Gradient in their new showroom in Stockholm, Sweden. The dark, melange effect in the flooring makes a suiting background for the different design furniture. The airy showroom is divided into two floors and is filled with natural lights from the big windows facing the street.

BOLON



Hay pop-up shop at Selfridges in London, UK



HAY chose Silence Sense for their new pop-up shop at Selfridges in London, UK. 120 square meters of Silence Sense tiles are installed quarter-turned. The turning of the tiles combined with lighting creates reflections and a checked pattern on the floor. The textile feel and elegant grey colour in the floor mixes well with the furniture and accessories from the Danish design company.

BOLON

PROJECTS WE LOVE



PROJECT INFORMATION

Project: プロジェクト ic! berlin
City/country: 市/国 Taipei, Taiwan
Architect: 設計 S.Design Great Art & Interior
W.C.H Design Consulting
Collection: シリーズ Bkb Plain Steel, Botanic
Osier, Now Anthracite
Area: 面積 100 m²
Year: 竣工 2015



IC BERLIN US

Promoted as Berlin's favourite eyewear brand, ic! berlin's iconic frames stand behind the philosophy of being "designed with passion, produced with precision and handcrafted with love." For this renovation, this satellite store in Taipei, Taiwan chose to install Bolon. A combination of Bkb Plain Steel, Botanic Osier and Now Anthracite were fitted across 99 square meters of the retail space. The metal shading of the flooring unifies the silver interior accents while highlighting the high-end eyewear of this famed store.

BOLON

ADVAN CO., LTD. 4-32-14 Jingumae Shibuya-ku Tokyo
TEL 03 3475 0281 FAX 03 3475 0280 <http://www.advan.co.jp>



LG Fashion in Seoul, South Korea



The new concept store of LG Fashion in Seoul in South Korea has a beautiful flooring installation. The design studio DNP People designed a 700 square meter big pattern of Bolon StudioTM Triangles in Botanic Cilia, Tilia, Osier and Ivy. Brown, beige, grey and green set colour to the space in a fashionable way.

BOLON

PROJECTS WE LOVE



PROJECT INFORMATION

Project: プロジェクト Projekt Rheinland AG
City/country: 市/国 Cologne, Germany
Architect: 設計 Carolin Danckwortt,
Anja Hollenhorst
Collection: シリーズ Silence Balance, Gracious,
Visual, Illuminate, Sense
Area: 面積 30 m²
Year: 竣工 2016



PROJEKT RHEINLAND GERMANY

Bolon's range of Silence planks are on display in the Projekt Rheinland AG showroom located in Cologne, Germany. With positivity defined as a main approach for the business, the pastel flooring installed here has a cheerful pattern that is both calming and harmonious. 20 square meters of Balance, Gracious, Visual, Illuminate and Sense ground the room and add a soft lift to the space.

BOLON

ADVAN CO., LTD. 4-32-14 Jingumae Shibuya-ku Tokyo
TEL 03 3475 0281 FAX 03 3475 0280 <http://www.advan.co.jp>



Rodebjer in Stockholm, Sweden



Rodebjer, the Swedish fashion brand, chose to install Bolon Studio™ Wing in Botanic Tilia in one of their shops in Stockholm. The shop design is collaboration between Rodebjer and the brand consult agency Knock. The floor is corresponding in a truly beautiful way with the soft, patterned textiles in the clothing and the raw pine in the display furniture.

BOLON

PROJECTS WE LOVE



PROJECT INFORMATION	
Project: プロジェクト	Shadow Arcaden
City/country: 市 / 国	Düsseldorf, Germany
Architect: 設計	
Collection: シリーズ	Artisan Slate, Coal, Fuchsia
Area: 面積	80 m ²
Year: 竣工	2015



SCHADOW-ARKADEN GERMANY

Located in a mature area of Düsseldorf, this German shopping center is a modern addition to the city center. With a variety of designer shops and restaurants located here, the mall is the ideal place to shop till you'll drop. The main floor of the stylish building features a food court which has been renovated to include Bolon Studio™ Wing tiles from the Artisan collection. Guests here can rest, sightsee and relax while enjoying the colourful pattern of the interior floor.

BOLON

ADVAN CO., LTD. 4-32-14 Jingumae Shibuya-ku Tokyo
TEL 03 3475 0281 FAX 03 3475 0280 <http://www.advan.co.jp>

PROJECTS WE LOVE



PROJECT INFORMATION

Project: プロジェクト Space Showrooms
City/country: 市 / 国 Australia, Malaysia
Architect: 設計 Inhouse
Collection: シリーズ Flow Coral
Year: 竣工 2016



SPACE SHOWROOMS AUSTRALIA

The new SP01 collection by Space is synonymous with Bolon's design philosophy of beautiful detailing, craftsmanship and high quality materials. Conceived in Australia and designed for an international audience, this latest collection is sure to give any room an extra lift. To help showcase the new design brand, Bolon was specially selected to be installed at various Space Showrooms in Australia, where 'Flow' helped bring the collection to life.

BOLON

ADVAN CO., LTD. 4-32-14 Jingumae Shibuya-ku Tokyo
TEL 03 3475 0281 FAX 03 3475 0280 <http://www.advan.co.jp>

PROJECTS WE LOVE



PROJECT INFORMATION

Project: プロジェクト Stockmann Department Store
City/country: 市/国 Helsinki, Finland
Architect: 設計 Stockmann Oyj
Collection: シリーズ Bolon By You Grid Grey Sand Gloss, Silence Vibration
Area: 面積 1700 m²
Year: 竣工 2016



STOCKMANN FINLAND

Located in the lovely city center of Helsinki, Stockmann Department store offers a wide selection of quality products from fashion, electronics, cosmetics and food to satisfy any keen shopper. Among 538,000 square feet of renovated shopping space, Bolon flooring was selected to be installed in various areas of the department store. The checkered flooring of Bolon By You Grid was chosen to complete 1,500 square meters of a lofty boutique, while 200 square meters of Silence Vibration provided a pleasant atmosphere in another showroom. The grey flooring – both soft and tactile – are wonderful enhancements to the retail spaces.

BOLON

ADVAN CO., LTD. 4-32-14 Jingumae Shibuya-ku Tokyo
TEL 03 3475 0281 FAX 03 3475 0280 <http://www.advant.co.jp>



Taiwan Mobile Digital Life Hall in Taipei, Taiwan



Taiwan Mobile Co is a leading telecommunications company in Taiwan. The company has recently built a digital life hall in Taipei where the costumers can experience the products. As an extension of the outside plaza Bolon flooring from Botanic and BkB collections mimic grass and concrete in a truly stylish way. Not only fashionable, Bolon flooring was also selected for highly practical reasons – it is easy to maintain.

BOLON

PROJECTS WE LOVE



PROJECT INFORMATION

Project: プロジェクト Wola Park, IKEA Centres Polska S.A.
City/country: 市/国 Warsaw, Poland
Architect: 設計 Mocolocco
Collection: シリーズ Bolon Studio Wing
Area: 面積 300 m²
Year: 竣工 2016



WOLA PARK POLAND

To provide a space for independent contractors and others looking for a social work environment, this co-working zone owned by IKEA Centers Polska S.A. offers an ideal solution. Located at Wola Park in Warsaw, Poland, 300 square meters of Bolon Studio™ Wing tiles were installed to complete this recently renovated space. Artisan Ivory and Coal were not only selected by architect firm Mocolocco to define the workplace, but was the collection of choice to meet the demands of the high-traffic area.

BOLON

ADVAN CO., LTD. 4-32-14 Jingumae Shibuya-ku Tokyo
TEL 03 3475 0281 FAX 03 3475 0280 <http://www.advan.co.jp>