

BOLON

オフィス施工例実績集





18 Feet and Rising in London, UK



London-based Studio Octopi is a young architecture firm that is currently very much on the up. When the advertising agency, 18 Feet and Rising, which is also attracting major attention, moved to new and more spacious premises, the choice of architecture firm fell naturally on Studio Octopi. The requirements placed were extremely tough - sky-high ambitions and demands for original solutions to be delivered within the constraints of a tight budget and time frame. Bolon's unique floors and rapid response were central to the solution and helped to produce a dynamic and inspiring interior setting that far exceeded the customer's expectations.

BOLON

PROJECTS WE LOVE



PROJECT INFORMATION

Project: プロジェクト 100 Washington Square
City/country: 市/国 Minneapolis, US
Architect: 設計 Elness Swenson
Graham Architects
Collection: シリーズ Bolon Studio™ Triangle
Now Anthracite, Cerulean,
Champagne, Botanic Viva
Area: 面積 550 m²
Year: 竣工 2016



100 WASHINGTON SQUARE US

Standing 332 feet tall, this skyscraper in downtown Minneapolis, MN is one of the tallest buildings in the city. Designed by acclaimed architect Minoru Yamasaki & Associates, this multi-tenant office building has everything from dramatic interior finishes to an exterior plaza complete with worldly accents. Among its 22 floors, Bolon flooring was selected for the beautifully renovated café located on the fourth floor. 550 square meters of Bolon Studio™ Triangles from the Now and Botanic Collections cover the cosy eatery. With guidance from Elness Swenson Graham Architects, the atmosphere was transformed with the help of the vivid, textured floor.

BOLON

ADVAN CO., LTD. 4-32-14 Jingumae Shibuya-ku Tokyo
TEL 03 3475 0281 FAX 03 3475 0280 <http://www.advan.co.jp>

PROJECTS WE LOVE



PROJECT INFORMATION

Project プロジェクト	Accenture
City/country 市/国	Amsterdam, The Netherlands
Architect 設計	CBRE Design
Collection シリーズ	Bolon Studio™ Wing; Create Inducto
Area 面積	1050 m ²
Year 竣工	2016



ACCENTURE THE NETHERLANDS

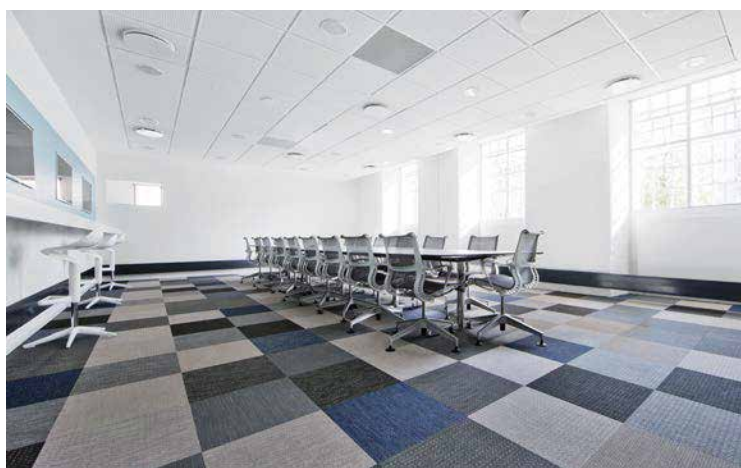
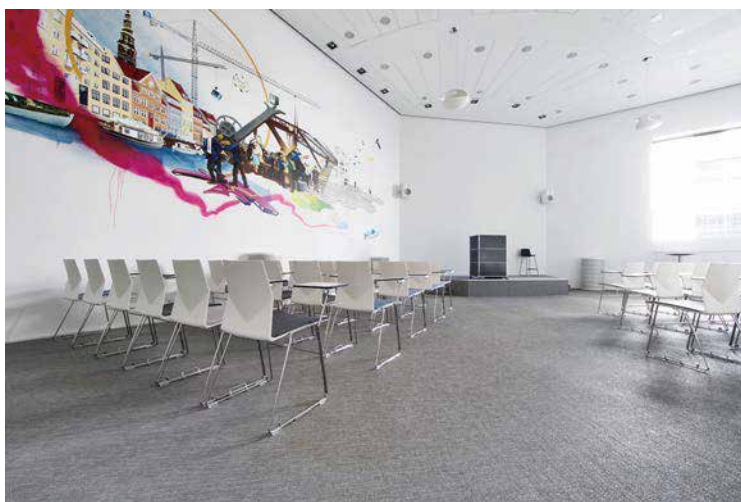
This multi-level Accenture building in Amsterdam, NL received an upgrade with the help of CBRE Design. Operating as a leading global professional service company, the modern interiors of this office space are complemented by 1,035 square meters of Bolon Studio™ Wings. The geometrical flooring pattern achieved by Create Inducto offer three-dimensional effects which playfully dance with the buildings unique architectural features.

BOLON

ADVAN CO., LTD. 4-32-14 Jingumae Shibuya-ku Tokyo
TEL 03 3475 0281 FAX 03 3475 0280 <http://www.advan.co.jp>



Dentsu Aegis Network in Copenhagen, Denmark



Interior designer Helle Holstein at Today Aps chose Bolon when redesigning the Danish office of the global communication agency Dentsu Aegis Network. 1800 square meters of Botanic in different colours and combinations cover the floors in the old building. Beautiful windows invite the daylight to play with the tactile flooring surface.

BOLON



AIFS in Bonn, Germany



AIFS Deutschland in Bonn, Germany, is a full subsidiary of the American Institute for Foreign Study Group. AIFS exchange programs throughout the world for more than 50,000 students and young people each year. The architects of Dreiform have playfully decorated a space, far away from the typical office. The atmosphere rather reminds you of a hostel more than a classic office. In the modern mix of material, graffiti and many more small details, Dreiform selected 100 square meters of Graphic.

BOLON



Project: プロジェクト

City/country: 市 / 国

Architect: 設計

Collection: シリーズ

Area: 面積

Year: 竣工

Almi Invest

Stockholm, Sweden

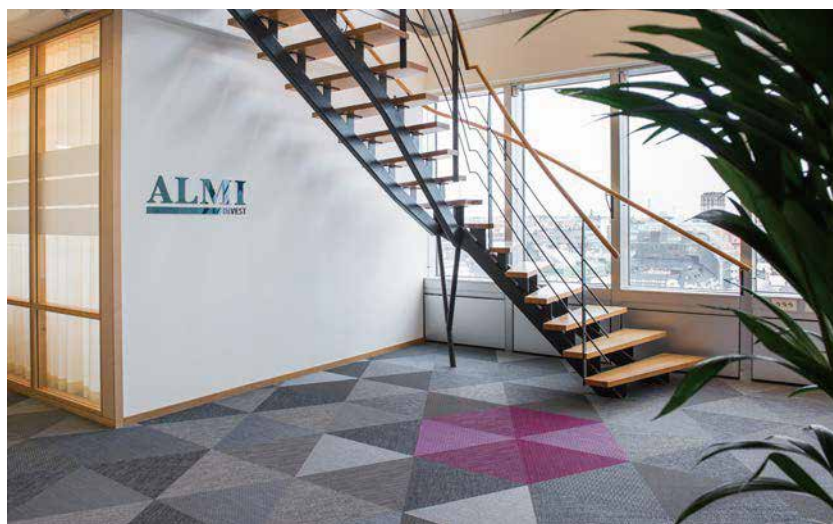
Sweco

Bolon Studio™ Triangles Artisan Slate,
Fuchsia, Coal, Botanic Osier, Iris

200 m²

2015

Almi Invest, Sweden



Almi Invest in Stockholm, Sweden is well-known for providing advisory and financial services to their customers. For this renovation, acclaimed architect firm Sweco chose Bolon Studio™ Triangles in Artisan and Botanic. With the expertise of Nils Lindman AB, 200 square meters of flooring was installed in geometric patterns and hexagon shapes in Artisan Fuchsia added a pop of colour to the office.

BOLON



AMP Financial offices, Australia



The architect studio Geyer impressed AMP with their stylish use of Bolon Create Pario throughout meeting rooms and breakout spaces in the West Perth financial office refurbishment. The structure and pattern in the flooring from Bolon are corresponding well with the use of natural materials as wood and marble in the project.

BOLON



Arberdeen/Anemoneparken in Copenhagen, Denmark



Interior designer Lene Aaboe Jensen was in charge of the renovation and design of a shared canteen in an office building in Anemoneparken, owned by Aberdeen Asset Management. She chose metal shimmering NOW in the dark and sophisticated colour Anthracite for the floor. The light from the windows is reflected in the near black flooring in a stunning way, creating a graphic interior with a twist.

BOLON



Arrow Energy in Brisbane, Australia



The established interior design practice Geyer has designed the new open office space for Arrow Energy in Brisbane, Australia. 1600 m² of Bolon Botanic collection in all the solid colours; Viva, Iris, Ivy, Tilia, Picea, Cilia, and Osier, are used to create a warm and welcoming environment.

BOLON



Project: プロジェクト

City/country: 市 / 国

Architect: 設計

Collection: シリーズ

Area: 面積

Year: 竣工

Atkins

Jönköping, Sweden

Mood Studio

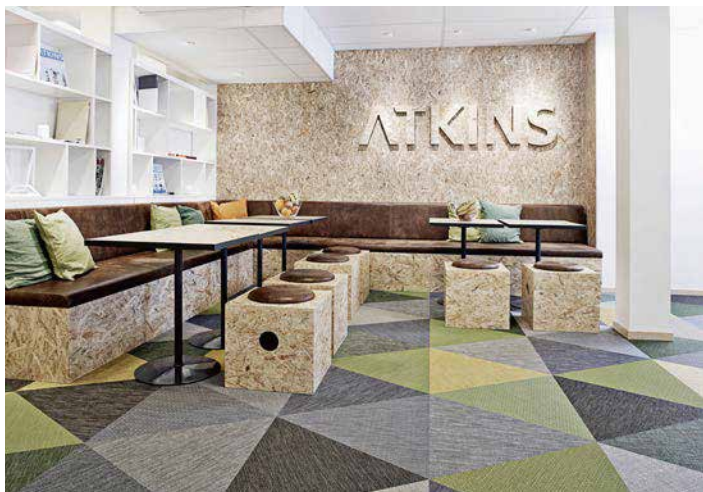
Botanic Ivy, Cilia, Tilia, osier, Iris, Picea

Artisan Malachite

200 m²

2014

Atkins in Jönköping, Sweden



Mood Studio has designed the new head office of Atkins in Jönköping, Sweden. With Bolon Studio™ Triangles they have created a 200 square meter big surface that feels alive, like a graphic interpretation of a summer meadow. The colour combination in the flooring is made through mixing different articles of Botanic and Artisan.

BOLON

PROJECTS WE LOVE



PROJECT INFORMATION

Project: プロジェクト Avdems
City/country: 市/国 Renens/Lausanne,
Switzerland
Architect: 設計 Espace Wider SA,
Génération Parquets Sàrl
Collection: シリーズ Bolon Studio™ Triangle;
Botanic Ivy, Viva, Artisan
Ivory, Malachite,
Petroleum, Botanic Picea
Area: 面積 372 m²
Year: 竣工 2016



AVDEMS SWITZERLAND

Architect firm Atelier Nova used Bolon Studio™ Triangles to complete the redesign of the AVDEMS office in Switzerland. A cheerful hexagonal pattern was achieved with flooring from the Botanic and Artisan collections and covered 372 square meters of the training office. The artistic installation fulfilled the client's request of a dynamic workflow across the organization while helping to brighten space.

BOLON

ADVAN CO., LTD. 4-32-14 Jingumae Shibuya-ku Tokyo
TEL 03 3475 0281 FAX 03 3475 0280 <http://www.advan.co.jp>



BDO in Kungälv, Sweden



BDO is an accounting firm in Kungälv, Sweden. When entering their new head office by architect firm Semrén & Månsson you are welcomed by soft tones of turquoise and grey combined with light wood and colourful details in yellow. 800 square meters of Silence Pulse are binding the rooms together. The airy environment lets the light play on the floor which highlights the 3D-effect in the woven surface.

BOLON



Project: プロジェクト
City/country: 市 / 国
Architect: 設計
Collection: シリーズ
Area: 面積
Year: 竣工

Bene Showroom
Cologne, Germany
Internal Interior Department Bene
Bkb Sisal Plain White, Sisal Plain Black
250 m²
2013

Bene Showroom in Cologne, Germany



Austrian design company Bene chose BKB Sisal Plain White and Black for their new showroom in Cologne. The 250 square meters office area is located in a new building by HPP Architects. It is a sober environment in black and white with highlights of contrasting colours red and green.

BOLON

PROJECTS WE LOVE



PROJECT INFORMATION

Project: プロジェクト	BNO, Beroepsorganisatie Nederlandse Ontwerpers
City/country: 市 / 国	Amsterdam, The Netherlands
Architect: 設計	VEVS Interiordesign
Collection: シリーズ	Flow Shell Silver
Area: 面積	200 m ²
Year: 竣工	2018



BNO THE NETHERLANDS

In a former Amsterdam hospital, today one of Netherlands creative hubs, one finds the new office of the Association of Dutch Designers (BNO). Designed by VEVS interior design agency, the luminous office is discreet but colourful – rich and playful but clean. Through workplace fabric panels and a strong textile feel provided by the Bolon Flow Shell flooring tiles, BNO's Amsterdam office reflects a tactility that gives warmth to its modern interior design.

BOLON

ADVANCE CO., LTD. 4-32-14 Jingumae Shibuya-ku Tokyo
TEL 03 3475 0281 FAX 03 3475 0280 <http://www.advance.co.jp>

PROJECTS WE LOVE



PROJECT INFORMATION

Project: プロジェクト Bonnier
City/country: 市/国 Stockholm, Sweden
Architect: 設計 Spectrum arkitekter
Collection: シリーズ Flow Coral
Area: 面積 450 m²
Year: 竣工 2016



BONNIER SWEDEN

Bolon flooring was selected for Bonnier's new office in Stockholm, Sweden. The multi-channel media group is well known for publishing high-quality media products from their operations in 14 countries around the world. Spectrum Arkitektur lent their expertise and developed a fun workplace where 450 square meters of Flow Coral was installed. The soft flooring accompanies pastel decorative accents that are not only beautiful but functional.

BOLON

ADVAN CO., LTD. 4-32-14 Jingumae Shibuya-ku Tokyo
TEL 03 3475 0281 FAX 03 3475 0280 <http://www.advan.co.jp>



Borger Service in Copenhagen, Denmark



The refurbished service office of the local authorities in Copenhagen, Denmark, is now joyfully orange to meet the citizens in a nice way. The floor area is given room with 400 square meters of Create Genero. HenningsenCo, a Feng Shui Consultant Agency, has been in charge of the project and the choice of colour and finishing.

BOLON



Born05 in Utrecht, The Netherlands



Renowned Dutch designer Maurice Mentjens has transformed the inner of a historical building in Utrecht to fit the needs of creative agency Born05. Bolon Studio Wing in brown and beige Create Pario is installed at the ground floor of the building, an active showroom and entrance area for meetings, presentations and brainstorming.

BOLON



The British Chamber of Commerce, Belgium



Through the vision of Sophie Green Interior Architecture, the British Chamber of Commerce in Belgium received a contemporary upgrade with this latest install. Bolon Studio™ Wing was used in a combination of Flow Pearl, Artisan Slate, Metallic Gamma, Now Tangerine and Botanic Cilia. The arrangement of earthy and vibrant tones covered 80 square meters of the dynamic office.

BOLON



Bwin office in London, UK

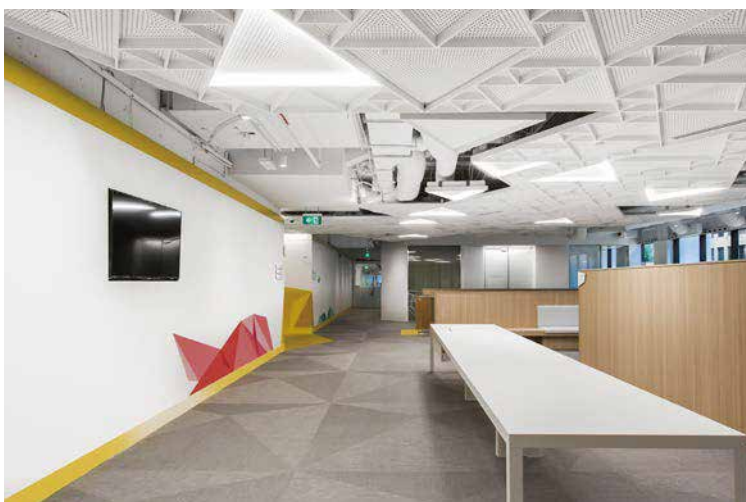


bwin.party digital entertainment, the world's largest listed online gaming company, has recently located their vast head office into London's prestigious One New Change building, designed by Bolon's designer friend and famed architect, Jean Nouvel. Renowned design and build practice, Ranne Creative Interiors, were responsible for the office design for bwin.party within the modernist building and selected Create Pario for the floor.

BOLON



CGU in Melbourne, Australia



To intensify the form of triangles the architect studio HASSELL literally took it up the walls. When the renovation took place in CGU's, a commercial insurer of workers, offices in Melbourne, Australia, HASSELL choose 1450 square meters of Botanic Osier and Viva in Bolon Studio™ triangles. The result speak for it selves; a playful space for creative meetings.

BOLON



Cheil office in Seoul, South Korea



13 000 square meters of tiles in the Botanic and Artisan collection cover the floor of the advertisement agent Cheil in Seoul. Bolon communicates well with design furniture from all around the world in this creative hub in South Korea.

BOLON

PROJECTS WE LOVE



PROJECT INFORMATION

Project: プロジェクト	CIMA
City/country: 市/国	London, UK
Architect: 設計	IDEA
Collection: シリーズ	Silence Planks: Gracious, Ocular, Visual, Balance, Sense
Area: 面積	380 m ²
Year: 竣工	2015



Photographer: Hunters Contracts, Seb Barros

CIMA UK

CIMA (Chartered Institute of Management Accounts) a global accreditor for accounts, set iDEA the challenge of completely redefining their workplace and working culture. The aspiration was for an environment that moves away from a typical accountancy feel, to instantly connect with clients and students visiting the office. To supplement the agile working environment, collaborative spaces had to be strategically integrated within the office space. The largest and most important of these spaces was the reception area, which functions as a typical reception, stay cafe, informal soft meeting area and hot desk space, as well as a flexible 20 person boardroom. The space celebrates 377 square metres of vibrant Bolon Lotus stripes and Studio planks.

BOLON

ADVAN CO., LTD. 4-32-14 Jingumae Shibuya-ku Tokyo
TEL 03 3475 0281 FAX 03 3475 0280 <http://www.advan.co.jp>



Project: プロジェクト
City/country: 市/国
Architect: 設計
Collection: シリーズ

Cisco Meraki
San Francisco, USA
A & O
BKB Plain White, Mole, Beige, Crème
Botanic Osier, Ivy, Artisan Coal, Slate
Graphic String, Draw, Spektra Aurora,
Non, Halo, Umov
1350 m²
2013

Area: 面積
Year: 竣工

Cisco Meraki in San Francisco, USA



The new office space for Cisco Meraki in San Francisco is a tactile home for a digital company. The flooring is a 1350 square meter big combination of tiles in BKB Plain White, Sisal Plain Beige and Sisal Plain Creme, Botanic Osier and Ivy, Artisan Coal and Slate, Graphic String and Draw, Spektra Aurora, Non, Halo and Umov. The mixed flooring is delicately combined with panels in raw wood and design furniture for a contemporary look with a graphic feeling of nature inside.

BOLON



Project: プロジェクト
City/country: 市 / 国
Architect: 設計
Collection: シリーズ

Commonwealth Government Tenancy
Canberra, Australia
Woodhead International – Alison Irons
Artisan Ecru, Oil, Slate, Coal
Botanic Ivy, Tilia, Cilia, Iris, Picea
1300 m²
2012
The Andrews Group

Area: 面積

Year: 竣工

Bolon's partner:

Commonwealth Government in Canberra, Australia



Woodhead choose 1300 sqm of Bolon Studio Planks in Artisan and Botanic collections when designing the new office of Australian Commonwealth Government in Canberra. A strong and visual choice, but the interior design selections were above all made ensuring 5 Star Nabers and 6 Star Green Star ratings. The Nishi project, where the office is located, takes on a progressive and inspiring approach in regards of eco-friendly building and is home to both offices, apartments, and cultural events.

BOLON



Corporate Culture Showroom, Australia



Corporate Culture has gone wild with Bolon Studio™ in a playful, yet truly elegant way. Wing and Triangle, two different shapes in Bolon Studio™, in different combinations of articles from the Artisan, Create, Botanic and BKB collections are used to highlight different areas of the shop. The flooring from Bolon works excellent as a patterned backdrop to the high-end design furniture Corporate Culture sells all over Australia.

BOLON

PROJECTS WE LOVE



PROJECT INFORMATION

Project: プロジェクト	Cundall Office
City/country: 市/国	London, UK
Architect: 設計	Studio Ben Allen
Collection: シリーズ	Flow Shore
Area: 面積	1500 m ²
Year: 竣工	2016



CUNDELL – ONE CARTER LANE UK

When Cundall moved their office to a building in the London city centre in 2015, the assigned architects from Ben Allen saw the opportunity to give the new workplace a sustainable character that puts the wellbeing of the occupants at the very heart of the design. With lots of lush plants, natural light streaming through the large windows and a series of Bolon flow tiles almost resembling shining silver in the light, Cundall's office breathes sustainability. That was also the reasoning behind the choice of Bolon flooring. "We chose Bolon because it's a recycled material, produced by a family-run business," Kumari, sustainable design consultant at Cundall, recounts. "I like that they are doing something good for the world", she concludes.

BOLON

ADVAN CO., LTD. 4-32-14 Jingumae Shibuya-ku Tokyo
TEL 03 3475 0281 FAX 03 3475 0280 <http://www.advan.co.jp>



Project: プロジェクト
City/country: 市 / 国
Architect: 設計
Collection: シリーズ
Area: 面積
Year: 竣工

Daum Communication
Jeju Island, South Korea
Mass Studies/Jo Minseok
Botanic Ivy, Bkb Sisal Plain Black
400 m²
2013
T & S Trading

Daum Communication in Jeju Island, South Korea



The South Korean architect studio Mass Studies has really used the creative possibilities with Bolon StudiøTM tile Deco when designing the assembly hall of the new head quarter for Daum Communication. Located on the volcanic island Jeje, Daum Space 1 is a beautiful, ochre coloured building that blends into the surrounding area. One could describe the workplace's architecture as futuristic and humane, a combination of essential keywords for Bolon flooring as well.

BOLON

PROJECTS WE LOVE



PROJECT INFORMATION

Project: プロジェクト	Department of Commerce
City/country: 市 / 国	Perth, Australia
Architect: 設計	IA Group
Collection: シリーズ	Create Pario, Como, Artisan Ivory
Area: 面積	250 m ²
Year: 竣工	2014



DEPARTMENT OF COMMERCE AUSTRALIA

The architect firm IA Group chose to use Bolon flooring for this renovation project at the Department of Commerce office in Perth, Australia. 225 square meters of Create Como and Pario, and Artisan Ivory added a subtle lift to the modern space.

BOLON

ADVAN CO., LTD. 4-32-14 Jingumae Shibuya-ku Tokyo
TEL 03 3475 0281 FAX 03 3475 0280 <http://www.advan.co.jp>



DIBP in Adelaide, Australia



Consultant firm IA Group chose Bolon for the new office of DIBP, Department of Immigration & Border Protection, in Adelaide, Australia. Bolon Studio™ Triangle in Botanic Coal, Ivory, Osier and Viva cover 732 square meters of floor area. The pattern in the flooring is reflected in both glass walls and freestanding shelves in a stylish way.

BOLON



Project: プロジェクト
City/country: 市 / 国
Architect: 設計
Collection: シリーズ
Area: 面積
Year: 竣工

Dura Vermeer
Rotterdam, The Netherlands
Annekoos Littel Interieurarchitecten bni
Create Pario, Efficio
400 m²
2013
Brandt BV

Dura Vermeer in Rotterdam, Netherlands



The Dutch building construction company Dura Vermeer has a new office in soothing shades of green. The choices in material and colour give a comforting feeling of nature inside. The distinct colour scheme is joined in the flooring where 400 square meters of Create Pario and Efficio are installed. Annekoos Littel Interieurarchitecten bni, a Dutch interior design studio, is behind the design of the office.

BOLON

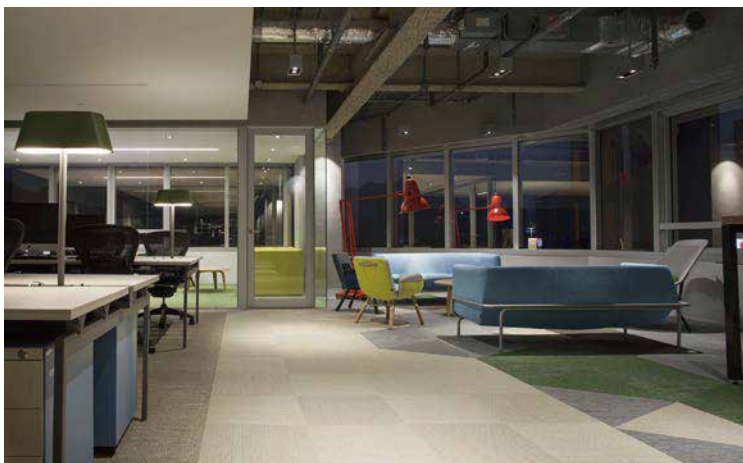
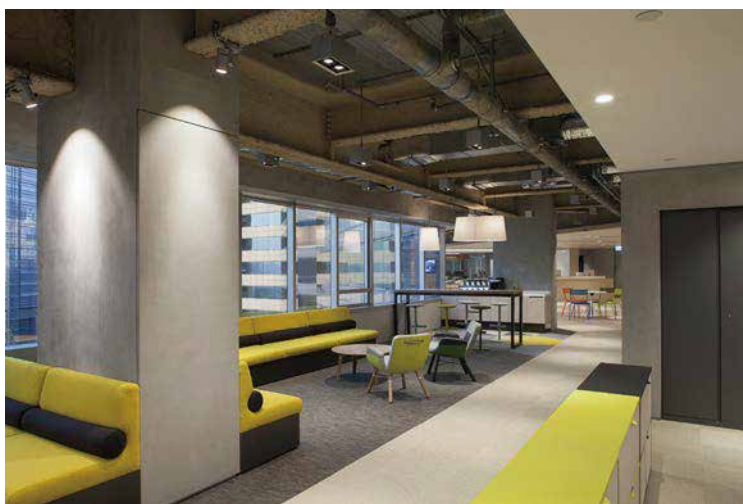


Project: プロジェクト
City/country: 市 / 国
Architect: 設計
Collection: シリーズ

Area: 面積
Year: 竣工

EF (Education First)
Hong Kong, China
CL3
Bkb Sisal Plain Sand, Brown, Hazel,
Botanic Osier, Viva, Ivy, Cilia, Tilia
1500 m²
2014
The Andrews Group Asia

EF in Hong Kong, China



Education First is a combined sales and administrative Asia Headquarter office for the Switzerland based company specializing in English language travel studies. The office occupies an area of 5 900 square meters for 173 staff located in a zigzag shaped office building with magnificent harbor view on one side. The architect CL3 decided to install the office with BKB Sisal Plain Sand, Brown and Hazel for almost 1 400 square meters and Botanic triangles Osier, Viva, Ivy, Cilia, Tilia for 150 square meters. Ending with a really good result!

BOLON



Oy Eli Lilly in Helsinki, Finland



Eli Lilly is a global pharmaceutical company with over 40,000 employees all around the world. Their head office in Helsinki is in the colours of red, white and grey with a touch of orange. The floor is covered in 850 square meters of glimmering and dark grey Now Anthracite.

BOLON



Figge + Schuster in Munich, Germany



Near the English Garden in the heart of Munich the advertising agency Figge + Schuster recently moved to new spaced in Montgelas Park. In the LEED Gold certificated building, the architects 2k-consult decided to install 300 square meters of Artisan Coal and Artisan Ecu.

BOLON



Förbo HQ in Mölnlycke, Sweden



Photographer: Kalle Sanner

When Förbo moved into their new location, Nordström Kelly Arkitekter tried to achieve a modern building with a distinct Förbo profile. The architects worked closely with the employees at Förbo and the key words for the project were small scale, a close to nature feeling, diversity and dedication. Nordström Kelly's work focuses especially on material, pattern and details and chose 100 square meters of Botanic and Now in Bolon Studt Triangle in earthy colours.

BOLON

PROJECTS WE LOVE



PROJECT INFORMATION

Project: プロジェクト Formwerk
City/country: 市/国 Berlin, Germany
Architect: 設計 Nils Naporra, Formwerk
Collection: シリーズ Silence Rhythm; Graphic
Herringbone Black
Area: 面積 170 m²



FORMWERK GERMANY

German architect Nils Naporra has creatively transformed this 160 square meter office in the center of Berlin into a vibrant workplace. By integrating the patterns of our Silence and Graphic collections into the design, a soft contrast to the interior was created. The consistently gentle green tones in the floors give life to this tastefully renovated office space.

BOLON

ADVAN CO., LTD. 4-32-14 Jingumae Shibuya-ku Tokyo
TEL 03 3475 0281 FAX 03 3475 0280 <http://www.advan.co.jp>

PROJECTS WE LOVE



PROJECT INFORMATION

Project: プロジェクト	Genesta
City/country: 市/国	Helsinki, Finland
Architect: 設計	Petra Majantie Oy
Collection: シリーズ	Silence Motion
Area: 面積	300 m ²
Year: 竣工	2016



GENESTA FINLAND

Real estate management company, Genesta chose to install 300 square meters of Bolon flooring throughout their office in Helsinki, Finland. Silence Motion, completed the renovation, overseen by designer Petra Majantie Oy. The elegant flooring emits a soft tweed feeling while colourful accents help to offset the neutral space.

BOLON

ADVAN CO., LTD. 4-32-14 Jingumae Shibuya-ku Tokyo
TEL 03 3475 0281 FAX 03 3475 0280 <http://www.advan.co.jp>

PROJECTS WE LOVE



PROJECT INFORMATION

Project: プロジェクト Advokatbyrå Glimstedt
City/country: 市/国 Gothenburg, Sweden
Architect: 設計 Wingårds
Collection: シリーズ Bolon Studio™ Triangles
Artisan Slate, Ivory,
Botanic Cilia, Picea
Area: 面積 700 m²
Year: 竣工 2015



GLIMSTEDT SWEDEN

Known as one of Sweden's largest law firms, Advokatbyrå Glimstedt is the latest office fitted with Bolon flooring at Park49 – the newest building added to Gothenburg's skyline. Designed by Gothenburg-based practice Wingårdhs, senior architect Helena Toresson and colleague Anna Mitrolios used Bolon Studio™ Triangles and mixed 'Artisan' in Slate and Ivory, with 'Botanic' in Cilia and Picea to create a beautiful pattern across 700 square meters of the office floor.

BOLON

ADVAN CO., LTD. 4-32-14 Jingumae Shibuya-ku Tokyo
TEL 03 3475 0281 FAX 03 3475 0280 <http://www.advan.co.jp>

PROJECTS WE LOVE



PROJECT INFORMATION

Project: プロジェクト	Västsvenska
City/country: 市/国	Handelskammaren
Architect: 設計	Gothenburg, Sweden
Collection: シリーズ	Stylt Trampoli
	Silence Ocular
Area: 面積	700 m ²
Year: 竣工	2015



VÄSTSVENSKA HANDELSKAMMAREN SWEDEN

The Silence collection was the flooring of choice for this install located on the ground floor of Park49 – Gothenburg's latest sustainable building. Karin Gullbrandtz, head architect from design firm Stylt Trampoli, selected 700 square metres of the Ocular hue to be installed at Västsvenska Handelskammarenand, the West Sweden Chamber of Commerce. The 3D effects of the flooring were bold and matched the spirit of the workplace.

BOLON

ADVAN CO., LTD. 4-32-14 Jingumae Shibuya-ku Tokyo
TEL 03 3475 0281 FAX 03 3475 0280 <http://www.advan.co.jp>

PROJECTS WE LOVE



PROJECT INFORMATION

Project: プロジェクト HBF
City/country: 市/国 Perth, Australia
Architect: 設計 Geyer
Collection: シリーズ Artisan Ivory, Coal, Ecru, Malachite, Petroleum, Slate
Area: 面積 930 m²
Year: 竣工 2017



HBF AUSTRALIA

With a dedication of creating a healthy working environment that reflects commitment to health and wellbeing, architects at Geyers completely transformed HBF's Western Australia headquarters. By installing six kinds of flooring from the Artisan collection, Geyers succeeded in creating a variety of places that accommodate for every employee and their individual needs. The holistic design, sustainable flooring solution and mix of materials and textures were groundbreaking in turning this 8,800 square meter headquarters into the modern, healthy and dynamic workplace that it is today.

BOLON

ADVAN CO., LTD. 4-32-14 Jingumae Shibuya-ku Tokyo
TEL 03 3475 0281 FAX 03 3475 0280 <http://www.advan.co.jp>



Heron Tower office space, UK



The Heron Tower is a commercial skyscraper in London. The 230 metres make it the third highest building in Greater London. Peldon Rose, a workplace consultant's agency, designed a 1000 square metre office in the building and installed flooring from Bolon in an intricate way by combining areas of Bolon Studïø Wing with areas of standard tiles, all in Create Como. The result is a shifting and beautiful blue floor.

BOLON

PROJECTS WE LOVE



PROJECT INFORMATION

Project: プロジェクト Hewlett-Packard
City/country: 市/国 Shanghai, China
Architect: 設計 IDA
Collection: シリーズ Graphic Herringbone
Beige, Bolon Studio™
Triangles Botanic Cilia,
Osier, Tilia, Now Silver
Area: 面積 2000 m²
Year: 竣工 2015



HEWLETT-PACKARD CHINA

Architect and Design firm IDA chose Bolon for this install at the Hewlett-Packard office in Shanghai, China. Well known as a multinational IT corporation providing solutions and services to consumers and enterprises, Bolon Studio™ Triangles in Botanic Cilia, Osier and Tilia and Now Silver covered 2,000 square meters of the office building alongside Graphic Herringbone Beige. The warm and cool tones of the flooring balanced the rich finishes of the décor to complete this sophisticated office.

BOLON

ADVAN CO., LTD. 4-32-14 Jingumae Shibuya-ku Tokyo
TEL 03 3475 0281 FAX 03 3475 0280 <http://www.advan.co.jp>



Project: プロジェクト

City/country: 市/国

Architect: 設計

Collection: シリーズ

Area: 面積

Year: 竣工

Hill + Knowlton Properties

Helsinki, Finland

Itu Design Oy

Botanic Viva, Artisan Slate, Ecru,
Petroleum, Coal

750 m²

2015

Hill + Knowlton Properties, Finland

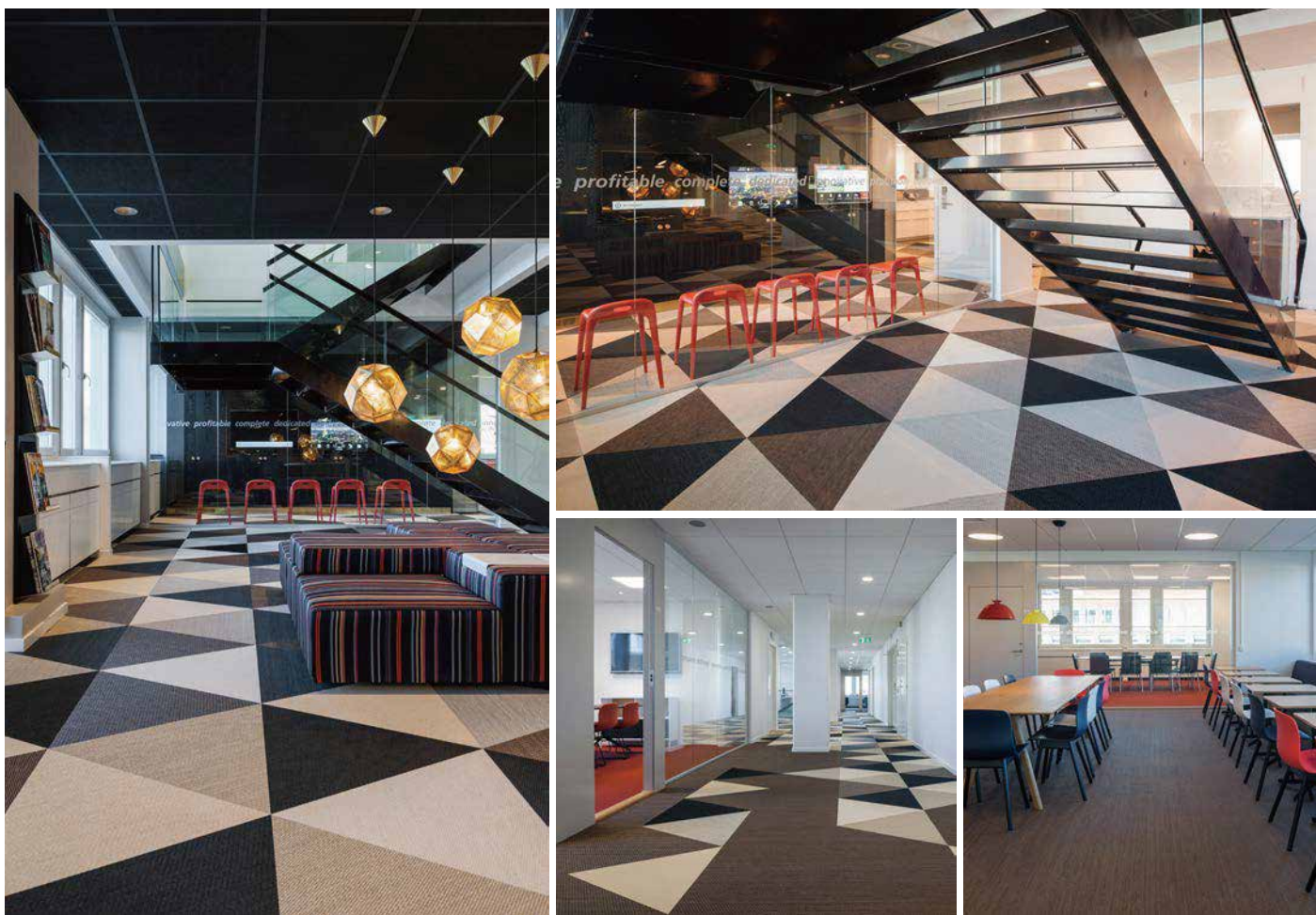


Global strategy firm, Hill + Knowlton turned to design house Itu for their latest Helsinki office renovation. To brighten the space, Bolon Studio™ Triangles in Botanic and Artisan were used for the flooring and were installed in soft hexagon patterns, covering 750 square meters.

BOLON



Hoist in Stockholm, Sweden



Hoist develops and delivers system, products and services for hotels, health care and public environments in Europe and Middle East. Architect Jacob Wallér of Jordens combined different articles from the Bkb collection in Bolon Studio™ Triangles and rolls when refurbishing their head office in Stockholm Sweden. The flooring works perfectly together with the other interior and creates a stylish, yet sober environment.

BOLON

PROJECTS WE LOVE



PROJECT INFORMATION

Project: プロジェクト IOS Technik
City/country: 市/国 Willich, Germany
Architect: 設計 kg5 Architekten Düsseldorf
Collection: シリーズ Bolon By You Lace; Black Steel Grey
Area: 面積 300 m²
Year: 竣工 2017



IOS TECHNIK GERMANY

As the German company IOS Technik develops and is highly specialised in products in the field of orthopedics, the architects at kg5 architecten aimed to create a high-tech, modern office that reflects the ambitions of their highly skilled IT specialists. By using forms and materials which suit the business park's old buildings and modern architecture, kg5 installed Bolon's Lace Black Steel Grey from the Bolon by You collection. Timeless flooring, modern interiors and a high tech lightning solution makes this office truly reflect the vision of a highly specialised IT company.

BOLON

ADVAN CO., LTD. 4-32-14 Jingumae Shibuya-ku Tokyo
TEL 03 3475 0281 FAX 03 3475 0280 <http://www.advan.co.jp>

PROJECTS WE LOVE



PROJECT INFORMATION

Project: プロジェクト JM
City/country: 市/国 Gothenburg, Sweden
Architect: 設計 Gestalt Arkitektur
Collection: シリーズ Bolon By You; Stich Black Ocean gloss
Area: 面積 385 m²
Year: 竣工 2017



JM SWEDEN

Developed with a modern workplace strategy in mind, the renovation of JM's office in Gothenburg transformed the Swedish housing developer into an activity-based workspace, drawn on the concepts of collaboration and flexibility. Gestalt Arkitektur, the assigned architecture studio based in Gothenburg, picked Stich Black Ocean Gloss 50 x 50 tiles from the Bolon By You collection to balance the colourful interior while providing a sober, yet elegant design expression.

BOLON

ADVAN CO., LTD. 4-32-14 Jingumae Shibuya-ku Tokyo
TEL 03 3475 0281 FAX 03 3475 0280 <http://www.advan.co.jp>



JMT Nordic Reklamebyrå in Bergen, Norway



A rich blue covers the floor area of communication agency JMT Nordic's new office. Architect Marie Ekstrand from Mellomrom Arkitekturpsykologi chose Artisan Petroleum when designing the 180 square meters big space. Friendly furniture in a contemporary design and a stunning view over the Norwegian scenery complete the interior.

BOLON

PROJECTS WE LOVE



PROJECT INFORMATION

Project: プロジェクト Järvenpää Social and
City/country: 市 / 国 Health Services House
Architect: 設計 Järvenpää, Finland
Protest Design
Collection: シリーズ Bkb Sisal Plain Granite,
Bolon Studio™ Triangle
Sisal Plain Granite,
Steel, Gamma
Area: 面積 700 m²
Year: 竣工 2016



JUST FINLAND

In the Finish town of Järvenpää, Healthcare company JUST, developed their new office in close collaboration with interior architects Protest Design. The floors selected for this project were Bolon Studio™ Triangles from the Bkb and Artisan collections as well as rolls in Sisal Plain Granite. The flooring, which creates a delicate balance between the colorful details in the office, is truly beautiful

BOLON

ADVAN CO., LTD. 4-32-14 Jingumae Shibuya-ku Tokyo
TEL 03 3475 0281 FAX 03 3475 0280 <http://www.advan.co.jp>

PROJECTS WE LOVE



PROJECT INFORMATION

Project: プロジェクト Karmar
City/country: 市/国 Warsaw, Poland
Architect: 設計 Zofia Pichelska - Karmar
Collection: シリーズ Graphic New York, Bkb
Sisal Plain Black, Sisal
Plain Steel, Artisan
Slate, Botanic Ivy, Iris
Area: 面積 150 m²
Year: 竣工 2017



KARMAR POLAND

In the beautiful Polish capital of Warsaw, Architect Zofia Pichelska transformed Karmars own office into something really special. Inspired by materials that connect to the companies vast history of construction, a dynamic workspace was created. To top it off 150 square meters of Bolon flooring provides a wonderful feeling to the clean and industrial design.

BOLON

ADVAN CO., LTD. 4-32-14 Jingumae Shibuya-ku Tokyo
TEL 03 3475 0281 FAX 03 3475 0280 <http://www.advan.co.jp>

PROJECTS WE LOVE



PROJECT INFORMATION

Project: プロジェクト Kinnarps
City/country: 市/国 Kinnarp, Sweden
Architect: 設計 Inhouse
Collection: シリーズ Flow Stream, Now
Champagne, Artisan Ivory
Area: 面積 1500 m²
Year: 竣工 2016



KINNARPS SWEDEN

Recognized as Sweden's largest design house chains, Kinnarps creates sustainable thought-out solutions that allow for a creative work environment. When it came time to renovate the Kinnarp office and showroom area, a combination of Flow, Now and Artisan were used to complete the update. The organic patterns of the pastel flooring balanced the lofty space of the light industrial building.

BOLON

ADVAN CO., LTD. 4-32-14 Jingumae Shibuya-ku Tokyo
TEL 03 3475 0281 FAX 03 3475 0280 <http://www.advan.co.jp>

PROJECTS WE LOVE



PROJECT INFORMATION

Project: プロジェクト Air France - KLM
Tokyo office
City/country: 市/国 Tokyo, Japan
Architect: 設計 Martin van der Linden –
Van der Architects
Collection: シリーズ Now Silver
Area: 面積 650 m²
Year: 竣工 2016



AIR FRANCE – KLM TOKYO OFFICE JAPAN

Star Alliance members Air France & KLM joined forces to develop a corporate office in the Japanese capital Tokyo. Architect Martin van der Linden of van der Architects created a vibrant environment by using common aviation industry materials steel plate and concrete as the base for the design. The interior now looks amazing with Bolon Now Silver serving as the runway to every part of the 650 square meters office.

BOLON

ADVAN CO., LTD. 4-32-14 Jingumae Shibuya-ku Tokyo
TEL 03 3475 0281 FAX 03 3475 0280 <http://www.advan.co.jp>



Korda & Partners in Paris, France



PHOTOS BY: ALEXIS PAOLI

A few steps away from the Champs Elysees, Korda & Partners a small consulting firm in communication, management and training has got a new look recently. The architect ArchiPelles, known for understanding the life cycle and use of the material, choose Botanic Viva, Osier, Iris, Cilia and Picea for 141 square meters. Their mission was to create a strong and unique architectural identity. Mission accomplished, don't you think?

BOLON

PROJECTS WE LOVE



PROJECT INFORMATION

Project: プロジェクト Lindbäcks
City/country: 市/国 Stockholm, Sweden
Architect: 設計 MER
Collection: シリーズ Bolon By You Stripe
Brown Sand gloss
Area: 面積 260 m²
Year: 竣工 2017



LINDBÄCKS SWEDEN

Architects at MER made the most of this unique Stockholm location by embracing the vast views of the Swedish capital. Lindbäcks Byggs new office, located in Solna just outside the heart of Stockholm has 260 square meters of Bolon By You Stripe Brown/Sand gloss installed. A Scandinavian mix of wood and white painted walls and ceiling is the cornerstones of this beautiful project. Spots of blue were added to the design to include the company color into this high-rise office interior. The people who visit or works here will experience the change of seasons with only a few millimeters of glass between them and the spectacular urban environment outside.

BOLON

ADVAN CO., LTD. 4-32-14 Jingumae Shibuya-ku Tokyo
TEL 03 3475 0281 FAX 03 3475 0280 <http://www.advanc.co.jp>

PROJECTS WE LOVE



PROJECT INFORMATION

Project: プロジェクト LyondellBasell
City/country: 市/国 Rotterdam, The Netherlands
Architect: 設計 CBRE Design
Collection: シリーズ Botanic Cilia, Osier, Graphic Mache
Area: 面積 240 m²
Year: 竣工 2017



LYONDELLBASELL THE NETHERLANDS

In this project, Netherland based plastic company LyondellBasells headquarters was equipped with 240 square meters of our collections Botanic and Graphic. CBRE Design incorporated a graphic feel to the design using both 50x50cm tiles and rolls from Bolon to create a fun and innovative flooring design that highlights certain areas by changing the expression of the floors itself. The interior developed in this project welcomes people into a wonderful office space in the Dutch town of Rotterdam.

BOLON

ADVAN CO., LTD. 4-32-14 Jingumae Shibuya-ku Tokyo
TEL 03 3475 0281 FAX 03 3475 0280 <http://www.advan.co.jp>



Mahoney Lawyers in Brisbane, Australia



The Mahoney Lawyers' new workspace in Brisbane by Ellivo Architects is designed to be fresh and inspiring. The space has a calm and soothing effect on the working environment and brings nature inside. Bolon Studio Triangles installed in a hexagon pattern on the floor in Botanic Osier, Cilia, Ivy, Tilia and Picea are combined with marble, dark wood and glass.

BOLON

PROJECTS WE LOVE



PROJECT INFORMATION

Project: プロジェクト McGraw Hill Education
City/country: 市/国 London, UK
Architect: 設計 Fabric Interior design & Architecture
Collection: シリーズ Flow Coral
Area: 面積 140 m²
Year: 竣工 2016



MCGRAW HILL EDUCATION UK

The objective for this project, completed by Fabric Interior Design & Architecture, was to create an exciting and welcoming sales environment for the sales team at McGraw Hill Education. This well-known publishing house, located in London was renovated to include a new open collaborative workspace that integrated a reception and break area. 140 square meters of Coral from the Flow collection was installed to balance the vibrant and adaptive finishes.

BOLON

ADVAN CO., LTD. 4-32-14 Jingumae Shibuya-ku Tokyo
TEL 03 3475 0281 FAX 03 3475 0280 <http://www.advan.co.jp>



Microsoft HQ in Stockholm, Sweden



Murman Architects choose 400 square meters of Graphic Etch and 600 square metres of Graphic String to Microsoft in Stockholm. The minimalistic tile flooring highlights the soft and subdued colours of the interior design in a poetic way.

BOLON



Ministry of Economic Affairs in Haug, NL



Hollandse Nieuwe and Op ten Noort Blijdenstein have collaborated in the design of the new office of Ministry of Economic Affairs in Hague. Bolon is pleased to be a part of the interior. Tiles of Botanic Cilia and sheets of Create Efficio are used as a tactile and human surface in an office where important decisions are made.

BOLON

PROJECTS WE LOVE



PROJECT INFORMATION

Project: プロジェクト Mullen Lowe Group
City/country: 市/国 London, UK
Architect: 設計 Chris Romer-Lee
Collection: シリーズ – Studio Octopi
Artisan Malachite,
Flow Stream, Botanic
Ivy, Graphic Checked
Area: 面積 4800 m²
Year: 竣工 2016



MULLEN LOWE GROUP UK

Following an invited design competition in May 2015, Studio Octopi were appointed the project of completing the recently refurbished Headquarters of MullenLowe Group in east London. Recognised as a creatively-driven integrated marketing group, the objective was to offer a bold space that allowed for increased collaboration across the agency. The design studio fit out 4,200 square meters of office space in the familiar C-Space building and each workspace was tailored using varying materials, including Bolon flooring.

BOLON

ADVAN CO., LTD. 4-32-14 Jingumae Shibuya-ku Tokyo
TEL 03 3475 0281 FAX 03 3475 0280 <http://www.advanc.co.jp>

PROJECTS WE LOVE



PROJECT INFORMATION

Project: プロジェクト Nandos
City/country: 市 / 国 Manchester, UK
Architect: 設計 STAC ARCHITECTURE
& I-AM WOW LTD
Collection: シリーズ Botanic Osier, Viva
Area: 面積 350 m²
Year: 竣工 2016



Photographer Shoot Photography

NANDOS UK

This office design of international restaurant chain Nandos is the result of the collaboration between STAC architecture & I-AM WOW LTD contractors. Taking the brief to create a space that felt open, STAC designed a 'free standing' box in the middle of the visually appealing office in Manchester, UK.

In addition to reclaimed timber wall panelling, burnt cedar and steel, Bolon flooring was selected to complete the space. 334 square meters of Viva and Osier from the Botanic collection were cleverly installed on the walls and on the floor in custom triangular patterns. The vibrant yellow flooring was the perfect contrast to the earthy décor of the trendy office.

BOLON

ADVAN CO., LTD. 4-32-14 Jingumae Shibuya-ku Tokyo
TEL 03 3475 0281 FAX 03 3475 0280 <http://www.advan.co.jp>

PROJECTS WE LOVE



PROJECT INFORMATION

Project: プロジェクト National Bank of Canada
Montreal, Quebec,
City/country: 市 / 国 Canada
Architect: 設計 Architecture 49
Collection: シリーズ Flow Pearl Silver
Area: 面積 1500 m²
Year: 竣工 2017



NATIONAL BANK OF CANADA CANADA

In 2016, the National Bank of Canada unveiled its new trading floor in Sun Life building, a 24-storey tower in central Montreal. The Canadian architecture firm, Architecture49, was assigned this historic heritage space which hadn't been renovated since 20 years back. Keeping its classic, rich details, including a ceiling lavishly decorated with gold lead and large skylight, the dark space was turned into a luminous, modernised office housing 256 traders and managers. The natural toned flooring from the Flow collection stands in perfect contrast to the room's historic details, adding a little drama to largest active trading floor in Quebec.

BOLON

ADVAN CO., LTD. 4-32-14 Jingumae Shibuya-ku Tokyo
TEL 03 3475 0281 FAX 03 3475 0280 <http://www.advan.co.jp>

PROJECTS WE LOVE



PROJECT INFORMATION

Project: プロジェクト Native Land
City/country: 市/国 London, UK
Architect: 設計 Tamiko Onozawa
Collection: シリーズ Bolon Studio™ Wing
Bkb Sisal Plain Black
Area: 面積 410 m²
Year: 竣工 2016



Photographer: Hugh Gilbert Photography

NATIVE LAND OFFICE UK

Commissioned by Native Land to design their new offices, London-based designer Tamiko Onozawa, from OTO architecture had a natural affinity with the building. To meet the demands of the new architectural space, 410 square meters of Bolon Studio™ Wings were selected and contributed to the functional requirements of the modern office. With its three dimensional effects, Bolon Bkb Sisal Plain Black plays with the natural light and lifts the space visually.

BOLON

ADVAN CO., LTD. 4-32-14 Jingumae Shibuya-ku Tokyo
TEL 03 3475 0281 FAX 03 3475 0280 <http://www.advan.co.jp>

PROJECTS WE LOVE



PROJECT INFORMATION

Project: プロジェクト Nidera
City/country: 市/国 Rotterdam, The Netherlands
Architect: 設計 Fokkema & Partners
Architecten
Collection: シリーズ Bkb Sisal Plain Seagrass
Area: 面積 525 m²
Year: 竣工 2016



NIDERA THE NETHERLANDS

Occupying the entire fifth floor of the renowned De Rotterdam complex, the architects Fokkema & Partners designed the new office for the global trade company Nidera. Apart from creating an open office space that encourages collaboration, Fokkema & Partners aimed to create an environment that would balance the two main characteristics of Nidera; 'bold' and 'corporate'. Special lighting solutions, warm yellow tones and Bolon Bkb Sisal Plain Seagrass was chosen to obtain a unique, exciting atmosphere in this stunning modern design haven.

BOLON

ADVAN CO., LTD. 4-32-14 Jingumae Shibuya-ku Tokyo
TEL 03 3475 0281 FAX 03 3475 0280 <http://www.advanc.co.jp>



NSB in Oslo, Norway



The HQ of the Norwegian State Railways (NSB) is the first building in Norway to achieve a BREEAM-NOR Excellent certification – and the flooring is of course by Bolon. “We were delighted to discover that Bolon complied with all the BREEAM requirements,” explains Lund + Slaatto’s Henning Klouman.

BOLON

PROJECTS WE LOVE



PROJECT INFORMATION

Project: プロジェクト Oktra
City/country: 市/国 London, UK
Architect: 設計 Oktra
Collection: シリーズ Botanic Lotus, Viva, Osier
Bkb Gamma, Now Silver
Area: 面積 160 m²
Year: 竣工 2015



OKTRA OFFICE UK

The award-winning design and build company Oktra, is known for crafting bespoke and sustainable workspaces for their clients. As an ideal compliment to the company's design aesthetic, Bolon Studio™ Triangles were installed throughout the trendy office covering 160 square meters of flooring. Colourful tiles from the Botanic, Bkb and Now collections help to define the various spaces around the office.

BOLON

ADVAN CO., LTD. 4-32-14 Jingumae Shibuya-ku Tokyo
TEL 03 3475 0281 FAX 03 3475 0280 <http://www.advan.co.jp>



Olofssons Bygg office in Borås, Sweden



Olofssons Bygg is a Swedish building company with over 40 years in the business. They installed 450 square meters of Create Miro in the renovation of their head office in Borås. The designer took advantage of the light reflecting qualities in Create by quarter turning the tiles.

BOLON

PROJECTS WE LOVE



PROJECT INFORMATION

Project: プロジェクト One American Square
City/country: 市/国 London, UK
Architect: 設計 Tessuto
Collection: シリーズ Silence Gracious, Ocular, Illuminate, Sense
Area: 面積 200 m²
Year: 竣工 2015



Photographer: Jonathan Bond

ONE AMERICAN SQUARE UK

Commissioned by the award-winning, central London conference centre, One American Square, Tessuto Interiors were on-hand for this office redesign. 200 sqm of Silence planks in Gracious, Ocular, Illuminate and Sense were used to create a cool and memorable look throughout the space, while ensuring future maintenance for the operator was kept to a minimum.

BOLON

ADVAN CO., LTD. 4-32-14 Jingumae Shibuya-ku Tokyo
TEL 03 3475 0281 FAX 03 3475 0280 <http://www.advan.co.jp>

PROJECTS WE LOVE



PROJECT INFORMATION

Project: プロジェクト Outokumpu
City/country: 市/国 Helsinki, Finland
Architect: 設計 Fyra Architects
Collection: シリーズ Artisan Ivory, Bolon By
Area: 面積 Missoni Optical Turquoise
Year: 竣工 320 m²
2016



OUTOKUMPU FINLAND

Employing more than 10,000 professionals around the world, Outokumpu is recognised as a global leader in the stainless steel industry. With facilities stretching from Germany to Mexico, Outokumpu's headquarters in Helsinki, Finland certainly stands out since being renovated to include Bolon flooring. With the help of passionate interior architect firm Fyra, 'Artisan' Ivory and 'Missoni' Optical Turquoise was installed covering 320 square meters of the bright office. The versatile flooring provided the right foundation to balance the colourful accents which decorate the workplace.

BOLON

ADVAN CO., LTD. 4-32-14 Jingumae Shibuya-ku Tokyo
TEL 03 3475 0281 FAX 03 3475 0280 <http://www.advanc.co.jp>

PROJECTS WE LOVE



PROJECT INFORMATION

Project: プロジェクト Büro Pandion
City/country: 市/国 Cologne, Germany
Architect: 設計 Silke Pabelick, Astrid Kölsche, Claudia van Bökel
Collection: シリーズ Bolon By You Lace Brown, Dove Blue, Ethnic Gabna, Artisan Ivory
Area: 面積 780 m²
Year: 竣工 2016



BÜRO PANDION GERMANY

Owner-managed real estate company Pandion AG is recognized for developing properties to include a portfolio of residential high-rises across Cologne, Bonn, Dusseldorf, Munich and Berlin. With a staff of around 110 among its various locations, this property giant is highly sought after and has even expanded into the commercial sector. During a recent renovation, the gentle and delicate design of Bolon By You Lace was chosen to complete 79 square meters of the Cologne head office lobby. In addition, the organic-like flooring of Bolon Ethnic and Artisan were installed and balanced the warm tones across of the workplace.

BOLON

ADVAN CO., LTD. 4-32-14 Jingumae Shibuya-ku Tokyo
TEL 03 3475 0281 FAX 03 3475 0280 <http://www.advan.co.jp>

PROJECTS WE LOVE



PROJECT INFORMATION

Project: プロジェクト PDG Office
City/country: 市/国 Victoria, Australia
Architect: 設計 Studio Tate
Collection: シリーズ Graphic Texture Black
Area: 面積 450 m²
Year: 竣工 2017



PDG OFFICE AUSTRALIA

Located in Victoria, Australia, property developer PDG approach each project as an opportunity to create a better place to work, live and interact all while offering personalised service to their clients. For this renovation, 450 square meters of Bolon flooring was selected by Melbourne-based interior architecture practice Studio Tate to install in the passionate office. Inspired by modern architecture, Graphic Texture Black was the perfect flooring solution for the contemporary space and harmonised well with the stylish finishes.

BOLON

ADVAN CO., LTD. 4-32-14 Jingumae Shibuya-ku Tokyo
TEL 03 3475 0281 FAX 03 3475 0280 <http://www.advan.co.jp>

PROJECTS WE LOVE



PROJECT INFORMATION

Project: プロジェクト Philips Lighting
City/country: 市/国 Warsaw, Poland
Architect: 設計 ARCADIS
Collection: シリーズ Silence Motion,
Create Inducto
Area: 面積 180 m²
Year: 竣工 2016



PHILIPS LIGHTING POLAND

Philips Lighting is a global market leader with expertise in developing, manufacturing and applying innovative LED lighting solutions. With over 120 years in operation, the company has embraced the digital revolution and creates lighting experiences that make people feel safe, comfortable, energized and entertained. Keeping in this spirit, architect firm ARCADIS was brought in to renovate the Philips office in Warsaw, Poland. Their insights in design helped deliver an impressive installation which was completed with Bolon flooring. 180 square metres of Bolon Silence and Create provided the base for the architectural inspired project. Made with profiled yarn, the flooring plays with light reflections and is a perfect complement to the lighting above.

BOLON

ADVAN CO., LTD. 4-32-14 Jingumae Shibuya-ku Tokyo
TEL 03 3475 0281 FAX 03 3475 0280 <http://www.advan.co.jp>



The Lab Phonak/Sonova in Stäfa, Switzerland



Phonak is a company specializing in hearing-aids. When redesigning their office in Stäfa, Switzerland, Bueronauten Architects chose a colourful direction. 300 square meters of Artisan Petroleum, Slate and Malachite cut into huge hexagons cover the floor. The colours of the flooring are highlighted in different furniture and interior elements which build a coordinated wholeness.

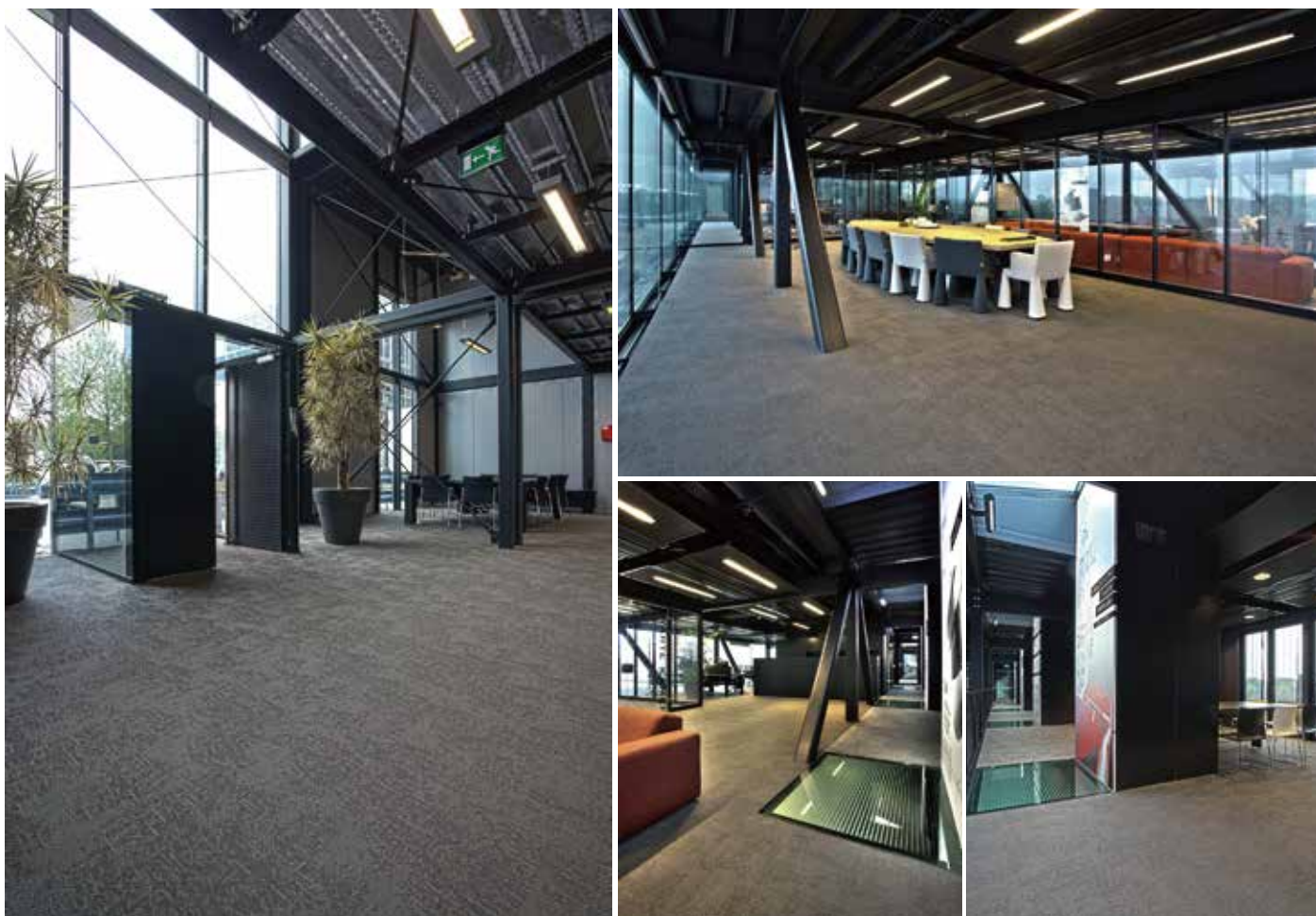
BOLON



Project: プロジェクト
City/country: 市 / 国
Architect: 設計
Collection: シリーズ
Area: 面積
Year: 竣工

Post Zuid
Apeldoorn, The Netherlands
COURAGE architecten and MIES architectuur
Create Pario
2500 m²
2013
Brandt BV

Post Zuid office in Apeldoorn, Netherlands



2500 square meters of Create Pario cover the floor of Post Zuid, the new governmental building for among others the fire brigade and the ambulance service of Appeldoorn in the Netherlands. Designed by Courage Architects to keep an industrial look with lots of glass and raw building materials, the building is also an exemplary role model for sustainable projects where for example rainwater is collected and reused by the fire brigade.

BOLON



Red Bull in Frankfurt, Germany



The design section of the visual communication agency Stan Studio has designed the new showroom and office of Red Bull in Frankfurt, Germany, in an energizing way. 300 square meters of Botanic Viva build a vast yellow canvas that ties the space together. Carefully selected furniture ornamented with integrated details act like functional sculptures in the rooms.

BOLON

PROJECTS WE LOVE



PROJECT INFORMATION

Project: プロジェクト RMS Parramatta
City/country: 市/国 Sydney, Australia
Architect: 設計 GHD Woodhead
Collection: シリーズ Artisan Coal, Fuchsia, Malachite, Slate, Petroleum, Botanic Picea
Area: 面積 1000 m²
Year: 竣工 2016



RMS PARRAMATTA AUSTRALIA

Integrated design company GHD Woodhead was tasked to design an inspirational workspace for Sydney's Road and Maritime Services (RMS) office. In addition to various custom embellishments, 1,000 square meters of Bolon flooring was used to complete the metropolitan space. Flooring from the Artisan, Botanic and Flow collections were used to not only provide a softer finish, but to improve acoustics over the exposed concrete flooring. Geometric patterns accompanied by grey accents were striking and helped to define various areas of the workplace.

BOLON

ADVAN CO., LTD. 4-32-14 Jingumae Shibuya-ku Tokyo
TEL 03 3475 0281 FAX 03 3475 0280 <http://www.advan.co.jp>

PROJECTS WE LOVE



PROJECT INFORMATION

Project: プロジェクト Ruag Space
City/country: 市/国 Linköping, Sweden
Architect: 設計 Studio Sofie Hjort
Collection: シリーズ Bolon Studio™ Triangle
Flow Stream, Now Cerulean, Silver
Area: 面積 100 m²
Year: 竣工 2017



RUAG SPACE SWEDEN

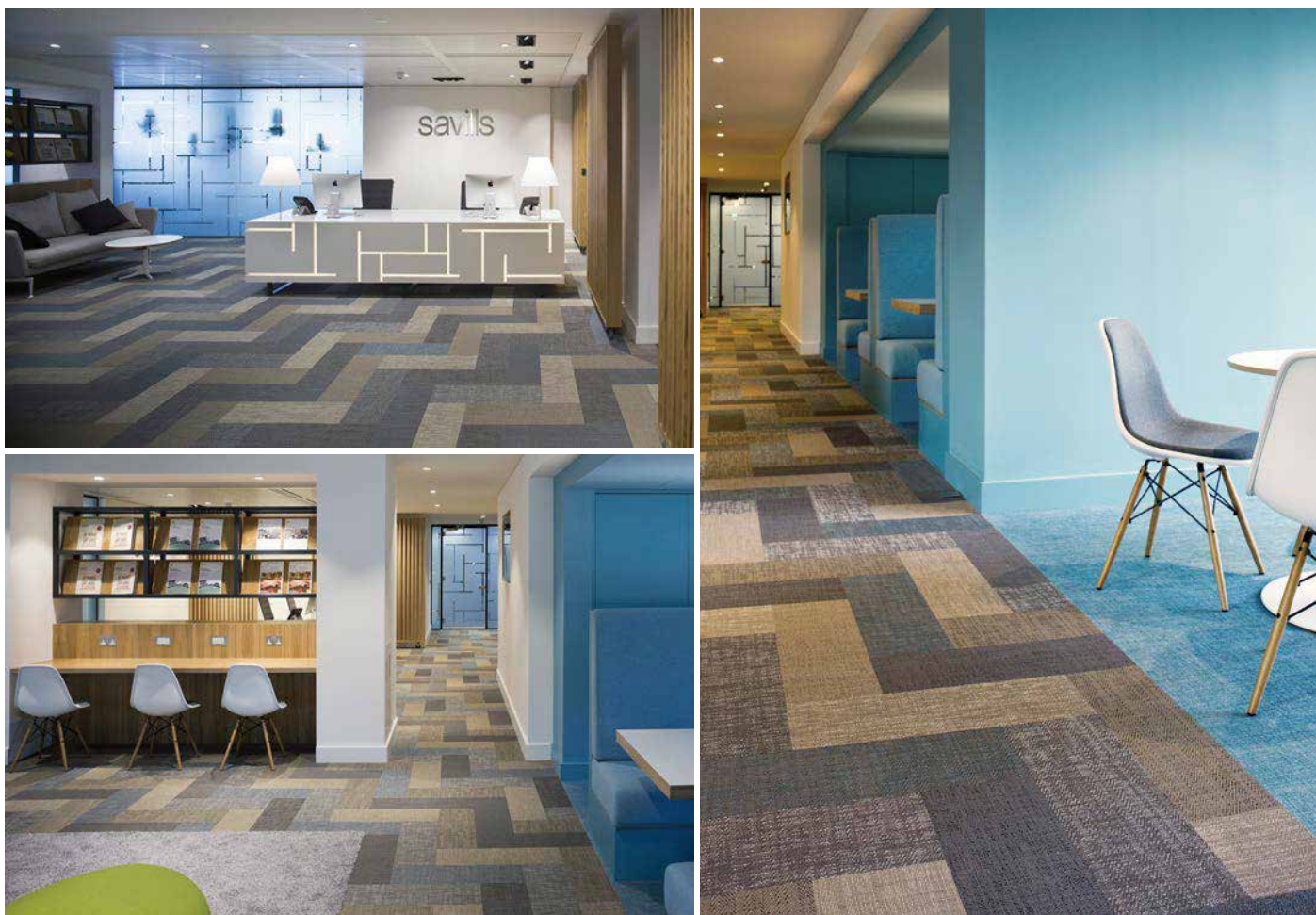
Ruag Space in Linköping Sweden tasked architects Krook & Tjäder to design their new kitchen and dining room. The 100 square meter area has been carefully developed into this great looking lounge area. The flooring from Bolon, Flow Stream, Now Cerulean and Silver in Bolon Studio Triangle 754 plays a crucial part in the designer's vision to embed the right feeling and colors into the design. Touches of blue have been incorporated in both small and big details, this bright space now looks amazing.

BOLON

ADVAN CO., LTD. 4-32-14 Jingumae Shibuya-ku Tokyo
TEL 03 3475 0281 FAX 03 3475 0280 <http://www.advanced.co.jp>



Savills Estate Agent in London, UK

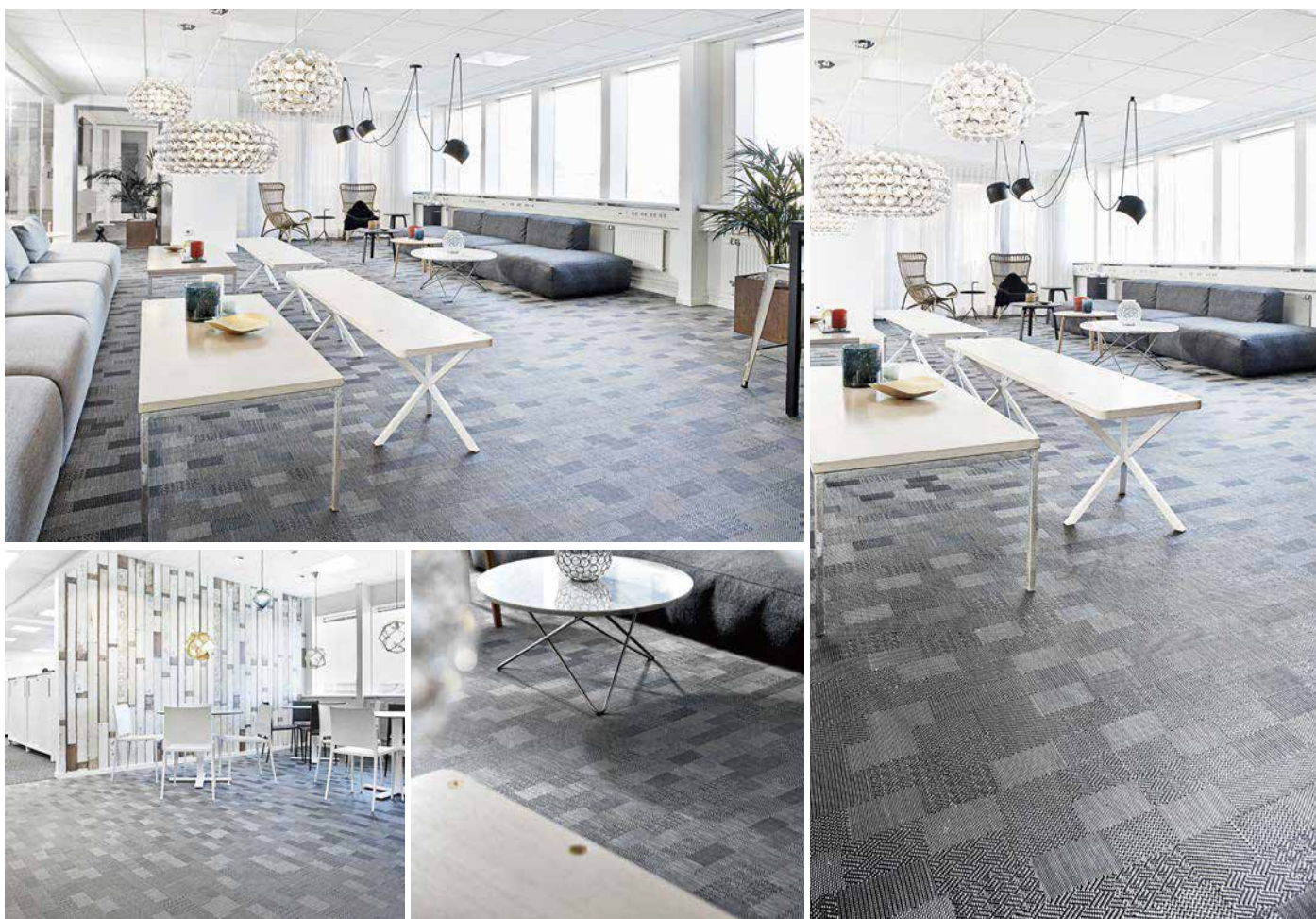


When renovating the offices of Savills Estate Agents in Richmond, London recently, architects MCM chose 180 square meters of Bolon flooring from our Silence collection – specifically, Sense, Gracious, Illuminate, Visual and Balance. Using a combination of both portrait and landscape planks, the result was a visually dynamic yet calming interior environment.

BOLON



Sector Alarm in Gothenburg, Sweden



Sector Alarm works with security solutions for private homes and small businesses. The company went with a warm and homey feel when renovating their office in Gothenburg, Sweden. An eclectic mix of design furniture and accessories are carefully placed on a 500 square meters big area of black and white Graphic Checked.

BOLON

PROJECTS WE LOVE



PROJECT INFORMATION

Project: プロジェクト ServiceUnion United PAM
City/country: 市 / 国 Helsinki, Finland
Architect: 設計 Innovarch OY
Collection: シリーズ Artisan Slate, Coal, Fuchsia, Petroleum, Silence Illuminate
Area: 面積 320 m²
Year: 竣工 2016



SERVICE UNION UNITED PAM FINLAND

Architects at Innovarch OY used numerous of different Bolon tiles from our collections, Artisan and Silence to create the lovely spectrum of colors that now raises up from the floor, at the Service Union United PAM office in Helsinki Finland. The interior design welcomes the spectacular Helsinki views through the big black painted window frames. This bright and colorful renovation turned this interior into a space full of harmony and playfulness. Imagine all the lucky ones who can call this 320 square meter office their daily workplace.

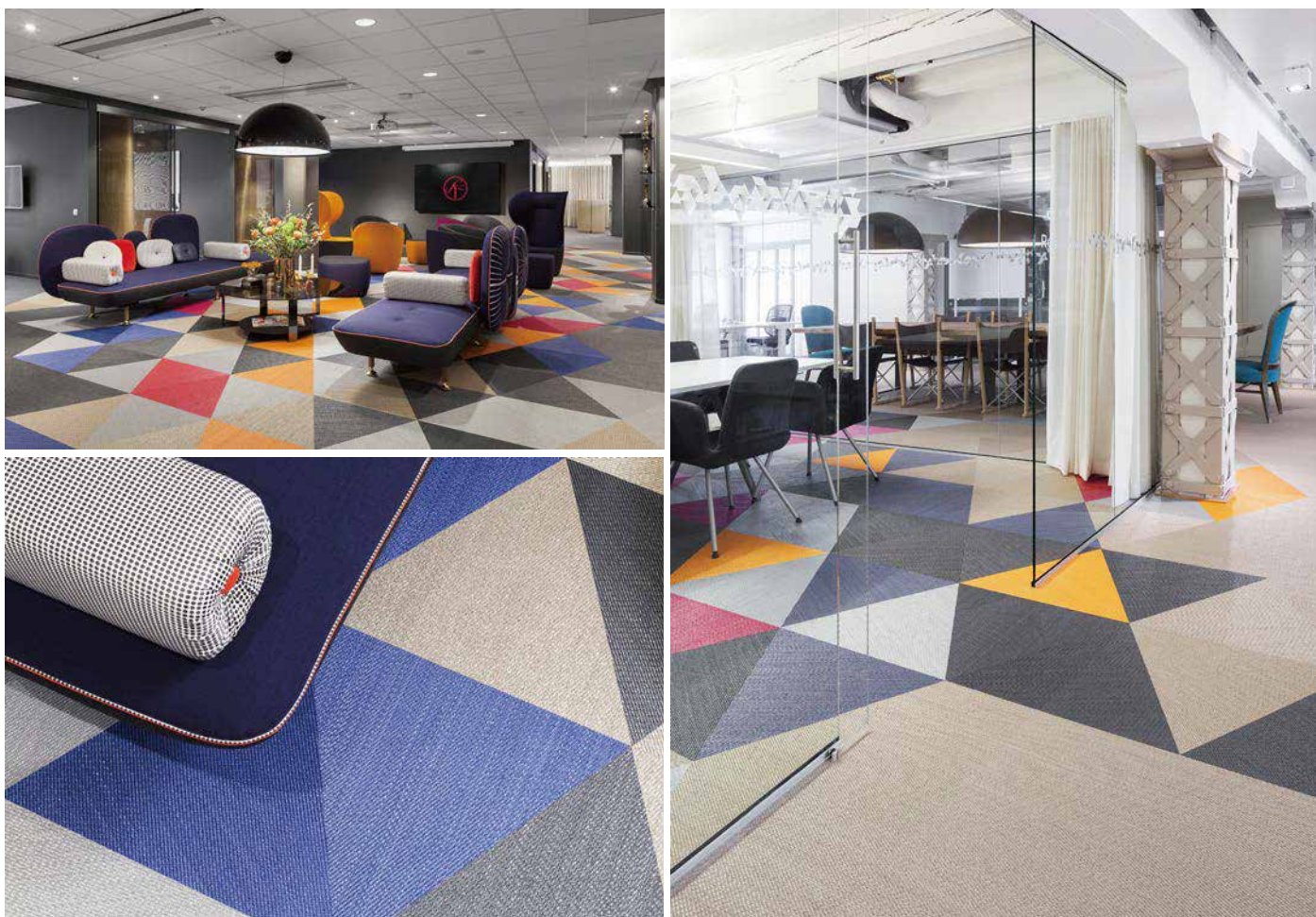
BOLON

ADVAN CO., LTD. 4-32-14 Jingumae Shibuya-ku Tokyo
TEL 03 3475 0281 FAX 03 3475 0280 <http://www.advanc.co.jp>



Project: プロジェクト Svensk Filmindustri
City/country: 市/国 Stockholm, Sweden
Architect: 設計 Geco Architects
Collection: シリーズ Now; Tangerine, Silver, Anthracite, Carnation, Cerulean, Champagne
Area: 面積 1500 m²
Year: 竣工 2015

Svensk Filmindustri in Stockholm, Sweden



For the new Stockholm headquarters of Swedish film production and distribution company Svensk Filmindustri (SF), Bitte Granlund of Geco Architects opted for a balanced, refreshing flooring palette featuring triangular Bolon tiles in red, blue, orange and grey tones. The circulation of these bright tiles throughout the different meeting and work areas eliminated the hierarchy between public and private spaces within the office. Also, the flooring had the added function of communicating Svensk Filmindustri's commitment to environmental sustainability. Pollutant-free, recyclable and easily cleaned with eco-friendly products, the flooring's texture and colours worked well with Svensk Filmindustri's existing furniture, thus eliminating the wasteful need for entirely new interior furnishings.

BOLON



Silverchef in Melbourne, Australia



Silverchef is a company providing funding for customers in the hospitality industry in Australia. Interior design agency Hot Black designed the Melbourne office of Silverchef with the ambition to create a feeling of outdoors indoors. 154 square meters of Artisan Malachite and Graphic Texture Black in a playful installation cover parts of the flooring area.

BOLON



Singelveste AlleeWonen in Breda, Netherlands



The Interior Architect Team, Sypko Domela Nieuwenhuis and Milee Herweijer were inspired by Bolon when they designed Singelveste AlleeWonen in Breda, NL. For this 2000 sqm project they chose the collection NOW and the designers Silver and Anthracite. When asked why they say, “we like the benefits of easy maintenance and in this case, the ease (design, installation and replacing) of tiles”.

BOLON



SKYPE OFFICE

The project

When the renowned pS Arkitektur designed Skype's new offices in Stockholm, (Münchenbryggeriet), Bolon's Botanic and Spektra collections were chosen for certain areas. "I'm trying to find materials where a standard product can be used to create something unique and appropriate for the location. One of the conceptual ideas in this project was to visualise a network of interconnected nodes (in the same way that Skype connects people).

For the floors, we chose to convert this network in triangular fields of colour," explains architect Mette Larsson Wedborn.

The architectural firm pS Arkitektur is working with a wide range of projects – from private housing to office furniture, and focuses on converting the client's brand into colours, shapes, functions and feelings.

Project: プロジェクト
City/country: 市/国
Architect: 設計

Collection: シリーズ
Area: 面積
Year: 竣工

Skype office
Stockholm, Sweden
Pierre-Emmanuel Vial
Archistudio
Spektra (Ray)
100 m²
2011

BOLON

ADVAN CO., LTD. 4-32-14 Jingumae Shibuya-ku Tokyo
TEL 03 3475 0281 FAX 03 3475 0280 <http://www.advan.co.jp>

PROJECTS WE LOVE



PROJECT INFORMATION

Project: プロジェクト Sparbanken Rekarne
City/country: 市/国 Eskilstuna, Sweden
Architect: 設計 Coco Form
Collection: シリーズ Bolon By You Grid Beige
Dusty Pink, Stripe Brown
Dusty Pink
Area: 面積 300 m²
Year: 竣工 2017



SPARBANKEN REKARNE SWEDEN

Theresia Svanholm at Coco Form created an environment for bank Sparbanken Rekarne, full with lush colors and tasteful flooring from Bolon. Public areas are designed with distinct coloring, and the offices are professionally calm and warm. This design required custom made flooring so the architect used Bolon By You GRID Beige Dusty Pink and Brown Dusty Pink. The nearly 300 square meters now have its completely own expression and we think this design deserves its place among the projects we love.

BOLON

ADVAN CO., LTD. 4-32-14 Jingumae Shibuya-ku Tokyo
TEL 03 3475 0281 FAX 03 3475 0280 <http://www.advan.co.jp>



Sparebank1 office in Fredrikstad, Norway



“They wanted an intimate, contemporary bank office with a natural sensation, and Bolon helped us to fulfill their wish”, says Geir Hermansson at Griff Architect studio. Even if Sparebank 1 is Norway's second biggest bank concern they find their strength in acting on a local level. In their new office in Fredrikstad the interior concept was inspired by the surrounding nature and the archipelago. The collection Artisan from Bolon fitted the concept well due to its textile feel, good durability and acoustics, and the possibility to have a light, Scandinavian colour on the floor.

BOLON



Spies Travel Agency in Copenhagen, Denmark



Spies Travel Agency started in 1956 and was one of the first agencies in Europe to arrange charter tours to Mallorca. Their new shop and call centre in Copenhagen, Denmark, is a welcoming and warm office space furnished with design furniture. Danielsen Space Planning, the design office behind the renovation, chose Botanic Cilia and Tilia for an area of 250 square meters.

BOLON



St George in Brisbane, Australia



The international design studio Hassell in Queensland chose 300 square meters of Bolon Stud™ Triangles in colour Botanic Ivy, Osier, Now Anthracite and Silver for St George office in Brisbane. The amazing diversity in the Botanic and Now Triangles gives the space a fresh and natural beauty, as the colours represent the vegetable kingdom. The matching with the wooden interior works perfect!

BOLON

PROJECTS WE LOVE



PROJECT INFORMATION

Project: プロジェクト Storebrand
City/country: 市 / 国 Lysaker Oslo, Norway
Architect: 設計 Brandl AS
Collection: シリーズ Ethnic Kaise, Bolon By You
You Weave; Grey Ocean Gloss
Area: 面積 800 m²
Year: 竣工 2017



STOREBRAND NORWAY

In this Norwegian office renovation, the architects from Brandl AS well succeeded in creating an inspiring, universally designed workplace that breaks away from the traditional office norm. A mix between colourful and wooden interiors, graphic wallpapers and flooring from the Ethnic and Bolon by You collections contributed to a contemporary office in which the health and needs of the employees are put at the very heart of the design.

BOLON

ADVAN CO., LTD. 4-32-14 Jingumae Shibuya-ku Tokyo
TEL 03 3475 0281 FAX 03 3475 0280 <http://www.advan.co.jp>

PROJECTS WE LOVE



PROJECT INFORMATION

Project: プロジェクト Taipei 101
City/country: 市/国 Taipei, Taiwan
Architect: 設計 iDA Workplace + Strategy
Collection: シリーズ Botanic Cilia, Iris, Ivy, Artisan Malachite
Area: 面積 116 m²
Year: 竣工 2017



TAIPEI 101 TAIWAN

The iconic office tower, Taipei 101, formerly known as the Taipei World Financial Center, holds the records for the 5th tallest skyscraper in the world. Apart from hosting various multinational companies, the building is home to the Taipei Stock Exchange, various shopping malls and restaurants. The newest addition to the 101 stories above the ground is this green co-working space built to cultivate young entrepreneurs. Located on the 37th floor, the conceptual workplace blends modern and Asian aesthetics that the designers from iDA Workplace + Strategy perfected with flooring from the Bolon Botanic and Artisan collections.

BOLON

ADVAN CO., LTD. 4-32-14 Jingumae Shibuya-ku Tokyo
TEL 03 3475 0281 FAX 03 3475 0280 <http://www.advan.co.jp>



Project: プロジェクト Teosto Ry – Finnish Composers Copyright Society Teosto
City/country: 市/国 Helsinki, Finland
Architect: 設計 Parviainen Architects
Collection: シリーズ Bkb Sisal Plain Steel
Area: 面積 500 m²
Year: 竣工 2014

Teosto Ry in Helsinki, Finland



The new office of Teosto, the Finnish composers' copyright society, is designed by Parviainen Architects with an overall feeling of softness. Notes of grey are mixed with colourful accessories in an airy space where 500 square meters of Bkb Sisal Plain Steel bind the interior together.

BOLON

PROJECTS WE LOVE



PROJECT INFORMATION

Project: プロジェクト Thrilled
City/country: 市/国 Malmö, Sweden
Architect: 設計 Escandi
Collection: シリーズ Bolon Studio™ Triangle
Artisan Coal, Slate
Area: 面積 220 m²
Year: 竣工 2016



THRILLED SWEDEN

This advertising agency has “a passion for building great brands”. Located in Malmö, Sweden Thrilled has been recognized for their smart design and communication strategies. Previously an in-house agency for Swedish bread maker Pågen, they’ve branched out and formed a new company – now proudly staffed by 12 employees. Design firm Escandi was called in to create a space perfect for the extension. Bolon Studio™ Triangles were used for the flooring, covering 220 square meters of contemporary office space. A winning pattern installed by Lindströms Golv, included ‘Artisan’ Slate and Coal which balanced the rounded furnishings used to complete the renovation.

BOLON

ADVAN CO., LTD. 4-32-14 Jingumae Shibuya-ku Tokyo
TEL 03 3475 0281 FAX 03 3475 0280 <http://www.advan.co.jp>



TNO in Den Haag, The Netherlands



Dutch architect firm Hollandse Nieuwe was given the mission to fuse two of the research organization TNO's offices into one. The challenge was to create activity based work places with both quiet section and areas for communication. The solution? Inventing different small spaces around the office where 4000 square meters of Bolon's Graphic Mache, Silence Motion and Artisan Coal was installed.

BOLON

PROJECTS WE LOVE



PROJECT INFORMATION

Project: プロジェクト TNT Head Office
City/country: 市/国 Mascot, Australia
Architect: 設計 IA Design
Collection: シリーズ Bolon Studio™ Wing;
Artisan Slate, Bkb Sisal
Plain Black, Botanic
Osier
Area: 面積 360 m²
Year: 竣工 2017



TNT HEAD OFFICE AUSTRALIA

IA Design worked with TNT to transform their 7,500 square meter head office in Mascot, Australia. Their redesign efforts resulted in a stunning renovation where Bolon Studio™ Wing tiles were selected to be installed. 360 square meters of flooring from the Artisan, Bkb and Botanic collections can be seen on numerous levels of the workplace. The warm and tactile flooring not only complements the building, but brings the interior space to life.

BOLON

ADVAN CO., LTD. 4-32-14 Jingumae Shibuya-ku Tokyo
TEL 03 3475 0281 FAX 03 3475 0280 <http://www.advan.co.jp>

PROJECTS WE LOVE



PROJECT INFORMATION

Project: プロジェクト Trollhättan energi
City/country: 市/国 Trollhättan, Sweden
Architect: 設計 Formelle Design & Arkitektur
Collection: シリーズ Flow Coral, Shell, Botanic Tilia, Viva, Bolon Studio™ Scale Flow Stream, Alga
Area: 面積 850 m²
Year: 竣工 2016



TROLLHÄTTAN ENERGI SWEDEN

A sustainable company with a clear vision. This impressive office located in Trollhättan, Sweden is responsible for providing safe and affordable urban services to the community. Chosen for their vision and unique aesthetics, Formelle Design & Arkitektur were selected to transform this office into a colourful work environment. Completing the space is 852 square meters of Bolon flooring from the Botanic and Flow collections. The modern flooring provides a harmonious flow between the work areas while the rich tones of the furniture adds an extra touch!

BOLON

ADVAN CO., LTD. 4-32-14 Jingumae Shibuya-ku Tokyo
TEL 03 3475 0281 FAX 03 3475 0280 <http://www.advan.co.jp>

PROJECTS WE LOVE



PROJECT INFORMATION

Project: プロジェクト Turku Technology
City/country: 市 / 国 Properties
Architect: 設計 Turku, Finland
Collection: シリーズ Sigge Architects
Graphic Etch, Artisan
Malachite, Slate, Ecru etc.
Area: 面積 2000 m²
Year: 竣工 2016



TURKU TECHNOLOGY FINLAND

Highly regarded as an attractive location for businesses and people, Turku, Finland was the ideal location for this new build project. Made up of 5 properties, the science park has a vision to create a space where companies can innovate, develop and generate possibilities for future growth and profitable business. Targeted for high-tech, biotechnology and B2B services the science park is located within walking distance of the city center and is a show stopper. Sigge Architects were responsible for the overall look of the building and the impressive features on the outside certainly match the inside. Using 2,000 square meters of various Bolon flooring, the interior spaces have been transformed each emitting a unique identify. You can't help but smile!

BOLON

ADVAN CO., LTD. 4-32-14 Jingumae Shibuya-ku Tokyo
TEL 03 3475 0281 FAX 03 3475 0280 <http://www.advan.co.jp>

PROJECTS WE LOVE



PROJECT INFORMATION

Project: プロジェクト Umeå Företagspark
City/country: 市 / 国 Umeå, Sweden
Architect: 設計 Wingårdh Architects
Collection: シリーズ Bolon By You Weave
Grey Sand gloss
Area: 面積 450 m²
Year: 竣工 2017



UMESTAN SWEDEN

Bolon flooring was selected by Swedish architects Wingårdh Arkitekter, as they created a new building and added this bright and sophisticated atrium inside Umeå Företagspark in Umeå. This space main focus is the social interaction between people in a well-designed environment. 450 square meters of Bolon By You Weave, Grey, Sand gloss creates a beautiful base for this interior design. Smoked glass along with the black and white elements of the architect's vision collaborates with the floor and the brightness of this project in a spectacular way.

BOLON

ADVAN CO., LTD. 4-32-14 Jingumae Shibuya-ku Tokyo
TEL 03 3475 0281 FAX 03 3475 0280 <http://www.advan.co.jp>

PROJECTS WE LOVE



PROJECT INFORMATION

Project: プロジェクト Urban Science
City/country: 市/国 Frankfurt, Germany
Architect: 設計 Purpur
Collection: シリーズ Bolon Studio™ Wing
Now Anthracite, Silver, Champagne
Area: 面積 180 m²
Year: 竣工 2015



Photographer: Thorsten Ruppert

URBAN SCIENCE GERMANY

The once nonchalant office of German based business-solutions company, Urban Science has transformed through the visions of interior design concept PURPUR. Technical materials meet clear, modern lines in this latest renovation. The open concept of the rooms were a perfect match for the flooring where 400 square meters of Bolon Studio™ Wings were installed to complete the space.

BOLON

ADVAN CO., LTD. 4-32-14 Jingumae Shibuya-ku Tokyo
TEL 03 3475 0281 FAX 03 3475 0280 <http://www.advan.co.jp>

PROJECTS WE LOVE



PROJECT INFORMATION

Project: プロジェクト Varner
City/country: 市/国 Oslo, Norway
Architect: 設計 LINK Arkitekter + LPO Arkitekter
Collection: シリーズ Ethnic Kaise
Area: 面積 8100 m²
Year: 竣工 2015



VARNER NORWAY

Norwegian clothing retail giant Varner, chose Bolon flooring to be installed at their newest headquarters in Asker, Norway. After redesigning the space with local architecture practice LINK Arkitekter + LPO Arkitekter the company then approached Bolon. "We needed something very quiet, sound absorbent and durable, but also something that looks very cool," sates Joakim Varner, co-owner of Varner. 8,100 square meters of Bolon Ethnic in Kaise fit the brief, and responded well to the clean and uncomplicated office space.

BOLON

ADVAN CO., LTD. 4-32-14 Jingumae Shibuya-ku Tokyo
TEL 03 3475 0281 FAX 03 3475 0280 <http://www.advan.co.jp>



Vasakronan in Uppsala, Sweden



Vasakronan is the biggest real estate concern in Sweden. Their office in Uppsala has Bolon flooring everywhere. Beautiful tiles from the Botanic collection brightens the corridors and rooms.

BOLON



Västsvenska turistrådet in Gothenburg, Sweden



Västsvenska Turistrådet is an organization that works with tourism and visitors in the western part of Sweden. When the company moved to a newly renovated office in the center of Gothenburg the architects of Erbéus & Jarlöv worked hard with adapting the existing furniture from the old office to a new surrounding in a historical building. They found Bolon flooring to work as a bridge between the different time zones.

BOLON

PROJECTS WE LOVE



PROJECT INFORMATION

Project: プロジェクト	Wall AG
City/country: 市 / 国	Berlin, Germany
Architect: 設計	IONDESIGN
Collection: シリーズ	Now Silver
Area: 面積	150 m ²
Year: 竣工	2015



WALL AG GERMANY

As an international street furniture provider and outdoor advertiser, Wall AG is well known throughout Germany and Turkey. Their mission to improve the quality of information and life in urban settings attracted interior design firm, IONDESIGN, leading to this renovation project in Berlin. Among other upgrades, 150 square meters of Bolon flooring in 'Now' Silver was installed. The metallic tones added the perfect amount of drama to this SmartDigital office.

BOLON

ADVAN CO., LTD. 4-32-14 Jingumae Shibuya-ku Tokyo
TEL 03 3475 0281 FAX 03 3475 0280 <http://www.advan.co.jp>



Project: プロジェクト WeWork
City/country: 市/国 Boston, USA
Architect: 設計 Dean Connell, Design Director, WeWork
Collection: シリーズ BKB Plain Rosy, Steel, Granite, Black, Botanic Cilia, Iris, Osier, Viva, Ivy, Picea
Area: 面積 260 m²
Year: 竣工 2014

WeWork in Boston, USA



WeWork is a community for creators located in several cities in the United States and London in England. Dean Connell, the design director at WeWork, chose Bolon Studio™ Plank and Wing for their new office in Boston. The different graphic patterns in mostly black-and-white leave room for a selection of diverse and colourful design furniture. The flooring is as playful as the rest of the interior and builds a creative base for the creators that chose to rent a flexible working space here.

BOLON



Yarra Valley Water, Australia



The Yarra Valley Water workspace and staff canteen by architect studio Gray Puksand were anchored on four key principles; Think, Chill, Focus and Meet. Tiles from Graphic New York and Hong Kong were integrated into one another on the floor, creating interesting areas in different tones of grey. The grey flooring sets a stylish background to colourful furniture.

BOLON

PROJECTS WE LOVE



PROJECT INFORMATION

Project: プロジェクト Zalando
City/country: 市/国 Berlin, Germany
Architect: 設計 Hülle & Fülle;
Mrs. Nicole Albrecht
Collection: シリーズ Artisan Coal, Ivory, Petroleum,
Now Champagne
Area: 面積 200 m²
Year: 竣工 2016



ZALANDO GERMANY

Online fashion leader Zalando, provides convenient shopping experiences to customers across Europe. Offering an assortment of trendy brands as well as its own private label, Zalando's popularity is on the rise. Preferred installers MINGA were selected for this office renovation where 200 square meters of Bolon flooring were expertly fitted. Among the various areas, the luxurious and welcoming feel of the workspace was completed with Bolon Studio™ Triangles. The colour combination of the neutral flooring is contemporary and warm.

BOLON

ADVAN CO., LTD. 4-32-14 Jingumae Shibuya-ku Tokyo
TEL 03 3475 0281 FAX 03 3475 0280 <http://www.advan.co.jp>

PROJECTS WE LOVE



PROJECT INFORMATION

Project: プロジェクト Zenuity
City/country: 市/国 Gothenburg, Sweden
Architect: 設計 Wingårdhs
Collection: シリーズ Flow Pearl Silver
Area: 面積 7400 m²
Year: 竣工 2017



ZENUITY SWEDEN

Jointly owned by Volvo Cars and Autoliv, the newly formed Zenuity leases a 7400 m² office in one of Europe's leading technology hubs, Lindholmen Science Park. Prior to commencing their work, the assigned architects and designers from Wingårdhs and Senab asked Zenuity's employees to fill out a questionnaire stating what they required from the office design in order to best perform their tasks. Based on their answers, Wingårdhs and Senab created a high-tech, sophisticated and neutral space where subtle pops of colors pair well with the silver tinted Bolon flooring.

This dynamic working space has been nominated for 'Sweden's coolest office award 2017'.

BOLON

ADVAN CO., LTD. 4-32-14 Jingumae Shibuya-ku Tokyo
TEL 03 3475 0281 FAX 03 3475 0280 <http://www.advan.co.jp>